

HDDVR4 4-Channel 4-in-1 DVR
HDDVR8 8-Channel 4-in-1 DVR
HDDVR16 16-Channel 4-in-1 DVR



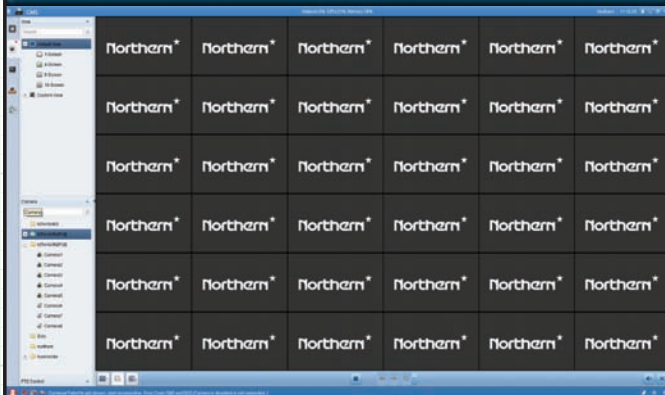
GUARDING VISION

Free Mobile App for iPhone, iPad, Android & Android Tablets

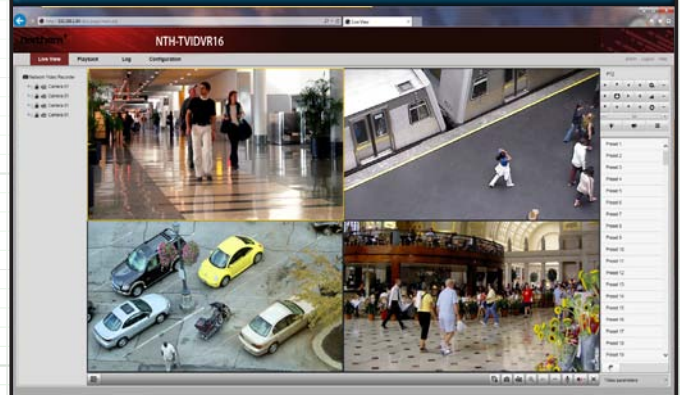
FEATURES:

- ◆ Compatible with TVI, CVI, AHD & 960H Formats
- ◆ 30FPS/Channel Real-Time Recording @ 720p
- ◆ 15FPS/Channel Recording @ 1080p
- ◆ 1 Channel IP Recording @ 4MP (4Ch)
- ◆ 2 Channel IP Recording @ 4MP (8Ch & 16Ch)
- ◆ Up to 8TB Storage Capacity (4Ch & 8 Ch)
- ◆ Up to 16TB Storage Capacity (16Ch)
- ◆ H.264, H.264+, H.265, H.265+ Compression
- ◆ Full Mobile Apps for iPhone, iPad & Android
- ◆ Compatible with IE & Safari Browsers
- ◆ Built-in Motion Detection & Privacy Mask
- ◆ Supports Third-Party Cloud Storage
- ◆ UTC Control (Camera Dependent)
- ◆ Up to 16Ch Synchronous Playback
- ◆ Free CMS Software Included
- ◆ Supports P2P Operation
- ◆ Included Mouse & IR Remote Control
- ◆ Front & Rear USB
- ◆ HDMI & VGA Main Monitor Outputs
- ◆ BNC Spot Monitor Output
- ◆ Built-in Audio & Alarm
- ◆ Supports 2-Way Audio

CMS Software For PC/Mac



Browser Based Remote Software



Learn More

4-in-1 Compatibility

HDDVR Series is compatible with the following HD Analog Camera Formats: TVI, CVI, AHD & 960H.

Mobile Apps for iPhone, iPad & Android

View & Playback Video from multiple mobile devices.

Real Time 720p Recording

Record up to 30FPS per Channel @ 720p Resolution or up to 15 FPS per Channel @ 1080p Resolution.

Up to 16TB Storage Capacity

Large Hard Disk storage capacity allows for longer storage of recorded video. 16TB Max for 16 Channel, 8TB Max for 4 & 8 Channel Models.

H.265 Compression

H.265 & H.265+ compression formats provide both increased video quality and reduced bandwidth consumption.

Free CMS Software for PC & Mac

Connect to multiple DVR's from a single computer with the included CMS software. Also compatible with Northern IP Cameras & NVR's.

HDMI, VGA & BNC Monitor Outputs

Simultaneously display video via HDMI & VGA main monitor outputs. BNC output for Spot/Call monitor applications.

P2P Operation

Peer to Peer function in Guarding Vision app makes set up easier by bypassing the need to configure port forwarding in most routers.

Remote Accessibility

Remotely connect, monitor, playback, record and change DVR settings via IE & Safari browsers.

IP Camera Recording

4 channel models can also record 1 additional IP camera @ 4MP. 8 & 16 channel models can record two additional IP Cameras @ 4MP.

Cloud Based Recording

Third-party cloud based storage support for Dropbox, Google Drive & Microsoft OneDrive.

UTC Control of Camera OSD

Up the Coax control can be used to access the OSD menu and configure cameras settings from the DVR.

Supports DDNS

Guarding Vision App DDNS insures you will always stay connected to your DVR when using a Dynamic IP address.

Hard Drive Configurations / Part Numbers / Package Contents

DRIVE SIZE	4 Channel	8 Channel	16 Channel
2TB	HDDVR42T	HDDVR82T	HDDVR162T
4TB	HDDVR44T	HDDVR84T	HDDVR164T
6TB	HDDVR46T	HDDVR86T	HDDVR166T
8TB	HDDVR48T	HDDVR88T	HDDVR168T
12TB	N/A	N/A	HDDVR1612T
16TB	N/A	N/A	HDDVR1616T

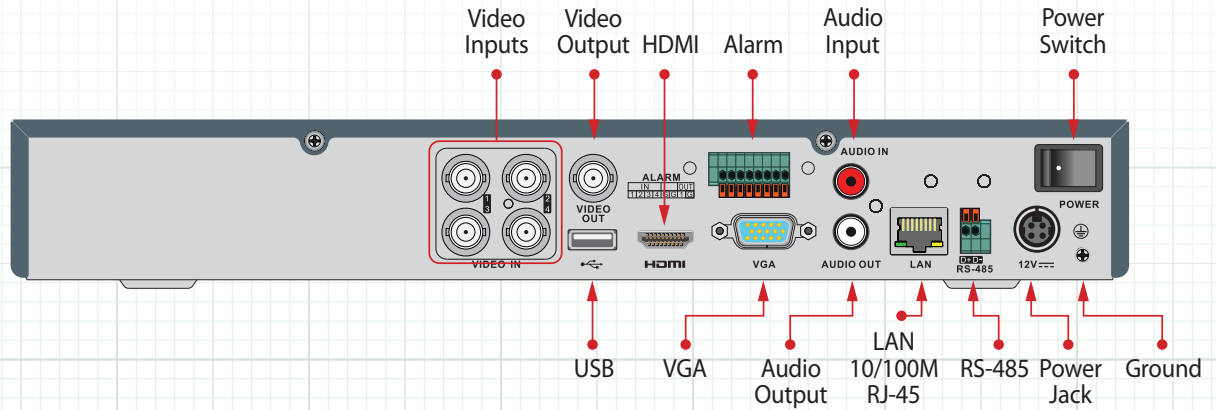
PACKAGE CONTENTS

1. Power Supply / Cord
1. IR Remote Control
1. Software CD
1. Quick Start Manual
2. Rack Mount Ears (16Ch)
1. Mouse

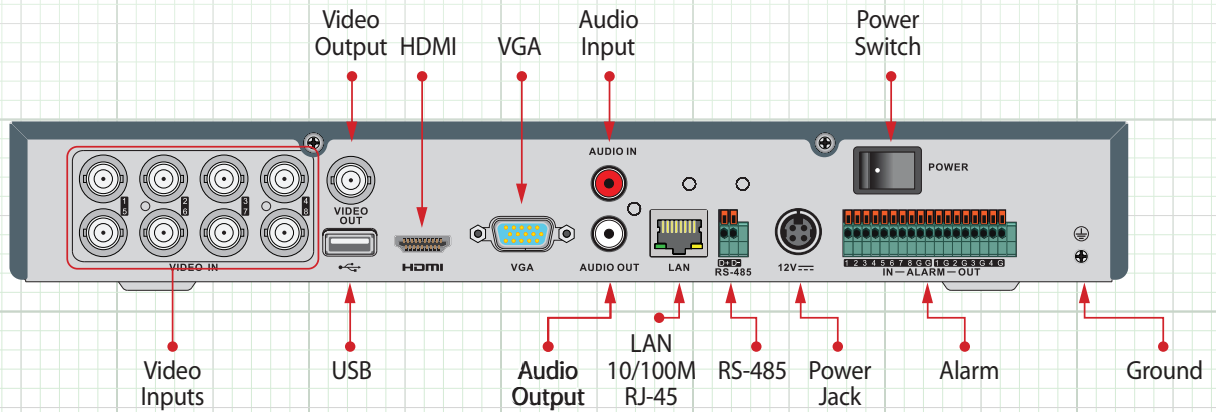


Rear Panel Definitions / Connections

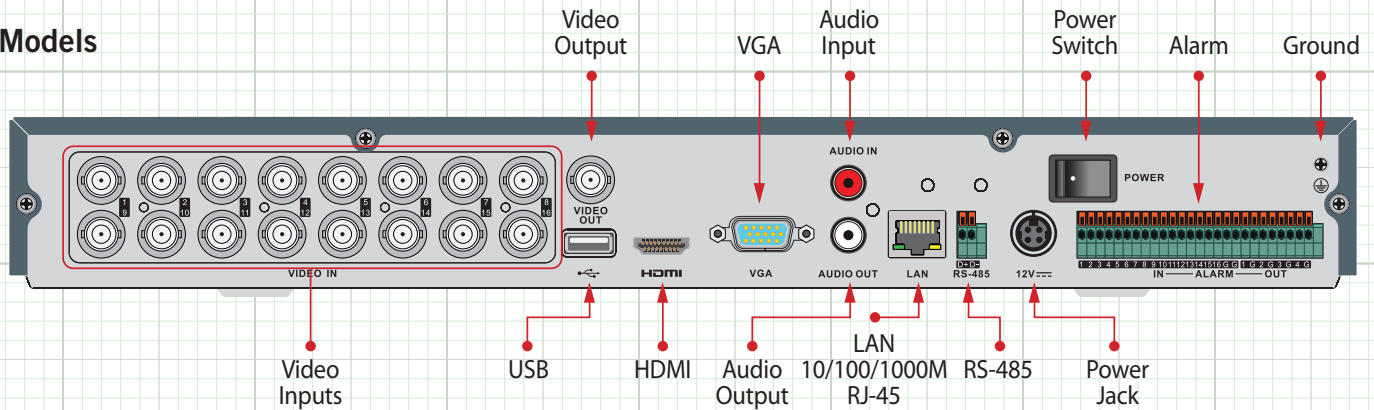
4 Ch. Models



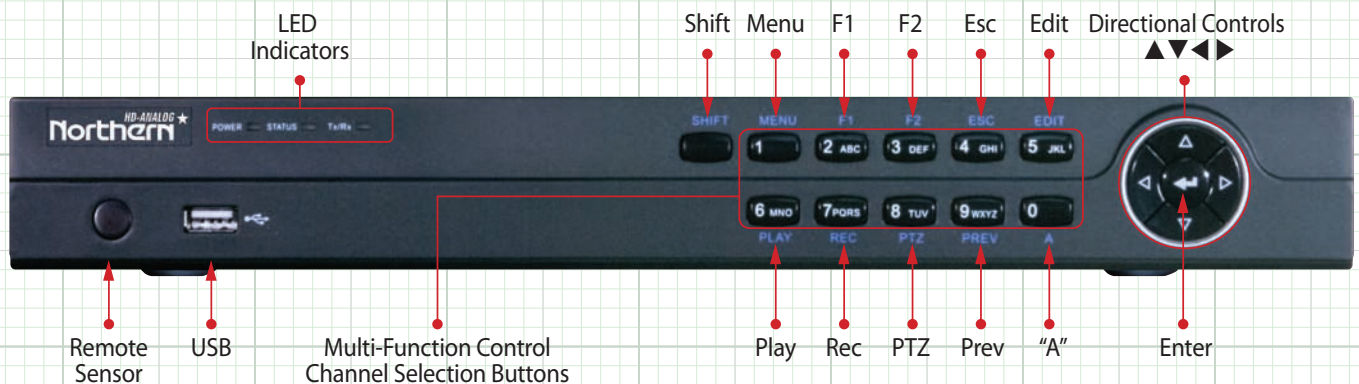
8 Ch. Models



16 Ch. Models



Front Panel Controls & Connections



HDDVR Series Specifications

	FEATURES	HDDVR4	HDDVR8	HDDVR16
Video/Audio Input	Video Compression	H.265+, H.265, H.264+, H.264		
	Analog Video Input	4-Channel	8-Channel	16-Channel
		BNC Interface (1.0Vp-p, 75Ω) Supports UTC (camera dependent)		
	HD-TVI Input	3MP, 1080p30, 1080p25, 720p60, 720p50, 720p30, 720p25		
		Note: 3MP Recording is Only Available on Ch1 of HDDVR4, Ch1~2 of HDDVR8, Ch1~4 of HDDVR16		
	AHD / HD-CVI Input	1080p25, 1080p30, 720p25, 720p30		
	CVBS Input (960H)	PAL / NTSC		
	IP Video Input	1-Channel	2-Channels	
		Up to 4MP Resolution, Supports H.265+, H.265, H.264+, H.264 IP Cameras		
Audio Compression	G.711u			
Audio Input	1-Channel, RCA (2.0Vp-p, 1KΩ)			
Video/Audio Output	BNC Output	1-Channel, BNC (1.0 Vp-p, 75 Ω), Resolution: PAL: 704 × 576, NTSC: 704 × 480		
	VGA/HDMI Output	1920 × 1080/60Hz, 1280 × 1024/60Hz, 1280 × 720/60Hz, 1024 × 768/60Hz		VGA: All resolutions listed to left. HDMI: 4K (3840 × 2160)/30Hz, 2K (2560 × 1440)/60Hz, 1920 × 1080/60Hz, 1280 × 1024/60Hz, 1280 × 720/60Hz, 1024 × 768/60Hz
	Encoding Resolution	1080p Lite Mode Disabled: 1080p Lite Mode Enabled:	3MP, 1080p, 720p, VGA, WD1, 4CIF, CIF 3MP, 1080p lite, 720p lite, VGA, WD1, 4CIF, CIF	
	Frame Rate	Main Stream: For 3MP Stream: For 1080p Stream: For 720p Sream:	When 1080p Lite Mode is Disabled 3MP, 1080p, 720p, VGA, 4CIF, CIF @ 15FPS 1080p, 720p @ 15FPS / VGA, WD1, 4CIF, CIF @ 25FPS (P) - 30FPS (N) 720p, VGA, WD1, 4CIF, CIF @ 25FPS (P) - 30FPS (N)	
		Main Stream:	When 1080p Lite Mode is Enabled 1080p Lite, 720p Lite, VGA, WD1, 4CIF, CIF @ 25FPS (P) - 30FPS (N)	
		Sub Stream:	WD1/4CIF @ 12FPS, CIF @ 25FPS (P) - 30FPS (N)	
	Video Bit Rate	32 Kbps to 6 Mbps		
	Audio Output	1 Channel, RCA (Linear, 1 KΩ)		
	Audio Bit Rate	64 Kbps		
	Dual Stream	Yes - Supported		
	Stream Type	Video, Video & Audio		
	Synchronous Playback	4 Channel	8 Channel	16 Channel
Network Mgmt.	Rmote Connections	128		
	Network Protocalls	TCP/IP, PPPoE, DHCP, Guarding Vision, DNS, DDNS, NTP, SADP, NFS, iSCSI, UpnP™, HTTPS, ONVIF		
Hard Disk	SATA	1x SATA Interface		2x SATA Interface
	Capacity	Up to 8TB Capacity for Each Hard Disk		
External Interface	Two-Way Audio Input	1-Channel, RCA (2.0Vp-p, 1KΩ) - Using the 1'st Audio Input		
	Network Interface	1x RJ45 10M/100M Self-Adaptive Ethernet Interface		1x RJ45 10M/100M/1000M Self-Adaptive Ethernet Interface
	USB Interface	2x USB 2.0		1x USB 2.0 (Front) / 1x USB 3.0 (Rear)
	Serial Interface	RS-485 (Half-Duplex)		
	Alarm In / Out	4-In / 1-Out	8-In / 1-Out	16-In / 1-Out
	Mobile App	Guarding Vision		
General	Power Supply	External 12 Volt DC 1.5 Amp		External 12 Volt DC 5 Amp
	Consumption (No Drives)	≤ 6 W		≤ 25 W
	Operating Temperature	-10° C to + 55°C (+14° F to + 131° F)		
	Operating Humidity	10% to 90%		
	Dimensions — Milimeter (Inch)	315 × 242 × 45 (12.4 × 9.5 × 1.8)		380 × 320 × 48 (15.0 × 12.6 × 1.9)
	Chassis	1U - Non Rack Mount		380mm 1U Chassis - Rack Mount
	Weight (No-Drives)	≤ 1.16 kg (2.6 lb)	≤ 1.78 kg (3.9 lb)	≤ 2 kg (4.4 lb)

Note: Specification subject to change without notice