




Quick Guide

Precautions

Fully understand this document before using this device, and strictly observe rules in this document when using this device. If you install this device in public places, provide the tip "You have entered the area of electronic surveillance" in an eye-catching place. Failure to correctly use electrical products may cause fire and severe injuries.

 WARNING	It alerts you to moderate dangers which, if not avoided, may cause minor or moderate injuries.
 CAUTION	It alerts you to risks. Neglect of these risks may cause device damage, data loss, device performance deterioration, or unpredictable results.
 NOTE	It provides additional information.

WARNING

- Strictly observe installation requirements when installing the device. The manufacturer shall not be held responsible for device damage caused by users' non-conformance to these requirements.
- Strictly conform to local electrical safety standards and use power adapters that are marked with the LPS standard when installing and using this device. Otherwise, this device may be damaged.
- Use accessories delivered with this device. The voltage must meet input voltage requirements for this device.
- If this device is installed in places with unsteady voltage, ground this device to discharge high energy such as electrical surges in order to prevent the power supply from burning out.
- When this device is in use, ensure that no water or any liquid flows into the device. If water or liquid unexpectedly flows into the device, immediately power off the device and disconnect all cables (such as power cables and network cables) from this device.
- Do not focus strong light (such as lighted bulbs or sunlight) on

this device. Otherwise, the service life of the image sensor may be shortened.

- If this device is installed in places where thunder and lightning frequently occur, ground the device nearby to discharge high energy such as thunder strikes in order to prevent device damage.

CAUTION

- Avoid heavy loads, intensive shakes, and soaking to prevent damages during transportation and storage. The warranty does not cover any device damage that is caused during secondary packaging and transportation after the original packaging is taken apart.
- Protect this device from fall-down and intensive strikes, keep the device away from magnetic field interference, and do not install the device in places with shaking surfaces or under shocks.
- Clean the device with a soft dry cloth. For stubborn dirt, dip the cloth into slight neutral cleanser, gently wipe the dirt with the cloth, and then dry the device.
- Do not jam the ventilation opening. Follow the installation instructions provided in this document when installing the device.
- Keep the device away from heat sources such as radiators, electric heaters, or other heat equipment.
- Keep the device away from moist, dusty, extremely hot or cold places, or places with strong electric radiation.
- If the device is installed outdoors, take insect- and moisture-proof measures to avoid circuit board corrosion that can affect monitoring.
- Remove the power plug if the device is idle for a long time.

Special Announcement

- All complete products sold by the manufacturer are delivered along with nameplates, quick setup guide and accessories after strict inspection. The manufacturer shall not be held responsible for counterfeit products.
- The manufacturer will update this manual according to product function enhancement or changes and regularly update the software and hardware described in this manual. Update information will be added to new versions of this manual without prior notice.
- This manual may contain misprints, technology information that is not accurate enough, or product function and operation description that is slightly inconsistent with the actual product, the final interpretation of company is as a standard.
- This manual is only for reference and does not ensure that the information is totally consistent with the actual product. For consistency, see the actual product.

NOTE

For more information, please refer to website.

1 Open Package Examination

Open the package, check the appearance of product for no obvious damage, and confirm the item list for table 1-1 is consistent.

Table 1-1 Packing list

Component	Quantity	Remark
Mini Dome Network Camera	1	
Quick Setup Guide	1	
L hexagonal wrench 80×25mm	1	
Installation location sticker	1	
Stainless self-tapping screw PA 4.0×30mm	2	
Swell plastic button $\phi 5.6 \times 29\text{mm}$	2	

2 Device Structure

2.1 Device Ports

NOTE

Different devices may have different device ports, please refer to the actual product.

Figure 2-1 Device ports

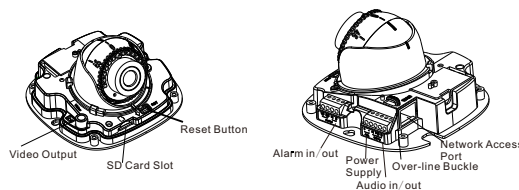


Table 2-1 Interface of camera

Port name	Description		Remark
Video Output	Analog video output		
SD card slot	Insert SD card		
Reset button	Restore the camera to the factory settings by pressing and holding this button for more than five seconds.		
4 PIN terminal block (applied for alarm function)	OA	Alarm out A	Applied for inner line dome camera
	OB	Alarm out B	
	IN	Alarm in	
	G	Ground	
5 PIN terminal block (applied for audio function and power)	+	12V Postive	
	-	12V Negative	
	Audio in	Receive an analog audio signal from devices such as a sound pickup device.	
	Audio out	Connect to an external audio device such as a speaker.	
	G	Ground	
Over-line buckle	Fixed the internal line of device.		
Network access port	Connect to a standard Ethernet cable.		

NOTE

Different devices may have different device ports, please refer to the actual product.

Figure2-2 Multi-head cable

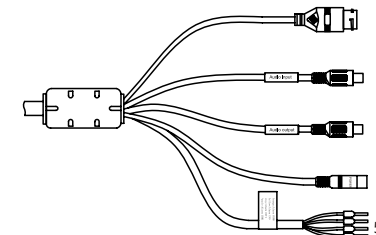


Table 2-2 Multi-head cable description

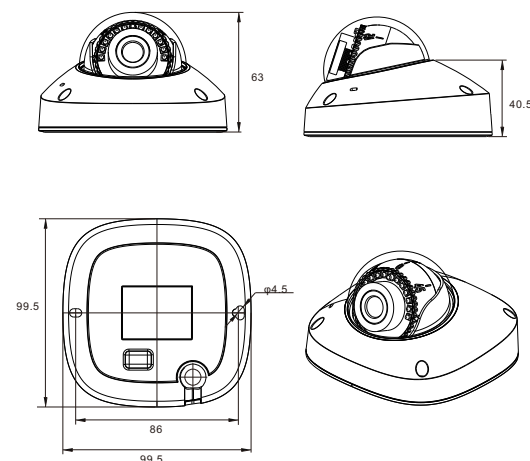
ID	Core	Description	Remark
1	Network access port	Connects to a standard Ethernet cable or POE.	
2	Audio input port	Receives an analog audio signal from devices such as a sound pickup device.	Applied for audio function
3	Audio output port	Connects to an external audio device such as a speaker.	
4	Power supply (DC 12V)	Connects to a 12V direct current (DC) power supply or 24V alternating current (AC) power supply.	
5	Gray core	Alarm output terminal A(normal open)	Applied for alarm function
	Purple core	Alarm output terminal B(normal open)	
	Yellow core	Alarm input positive terminal	
	Orange core	Alarm input ground terminal	

2.2 Camera Dimensions

NOTE

Different devices may have different dimensions, please refer to the actual product.

Figure 2-3 Dimensions of Dome(Unit:mm)



3 Device Installation



WARNING

To avoid moisture influence, install the dome cover at least half an hour after the camera is installed and powered on.

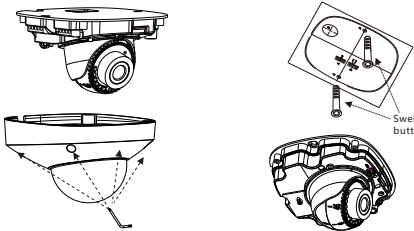
The mini dome camera can be installed in the ceiling, wall, wall bracket or ceiling bracket. This section describes how to install the camera in the ceiling.

Installation Steps:

- Step 1 Stick the Installation location sticker which is in accessory package on the ceiling or wall, Drill two holes based on the marks on the sticker. Drive the swell plastic buttons into the holes.
- Step 2 Use the wrench in the accessory package to unscrew the four screws on the dome cover. The camera is opened, as shown in figure 3-1.l

Figure 3-1 Opening camera

Figure 3-1 Installing camera



- Step 3 Fetch two black self-tapping screws from the accessory package. Then fix the screws to fasten the camera on the ceiling as shown in figure 3-2.

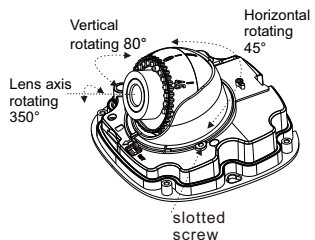
- Step 4 Connect the network access port and power supply of the multi-head cable. (the inner-line cameras need to fasten all lines to correspond terminal as shown in figure 2-1)

NOTE

- There are two outlet mode of cable, for the top outlet mode, user should drill the hole at first for threading cable.
- The side outlet mode that the installation sticker's gap should align the outlet rubber stopper.

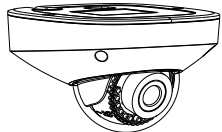
- Step 6 Connect the camera to monitor, loosen the screws of support frame, as shown in figure 3-5. Adjust the three axes to focus image on monitoring scenarios. Tighten the screws to finish adjustment.

Figure 3-3 Adjusting lens



- Step 7 (Arrange the cable of camera to over-line buckle, if the type of camera is inner-line), then assemble the dome cover with hex wrench, as shown in figure 3-4.

Figure 3-3 Assembling cover

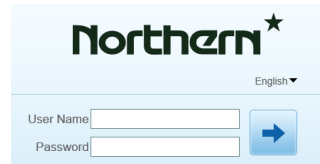


4 Quick Configuration(e.g IE)

4.1 Login

Open the Internet Explorer, enter the IP address of IP camera (DHCP is on by default) in the address box, and press Enter. The login page is displayed, as shown in figure 4-1. You can change the system display language on the login page.

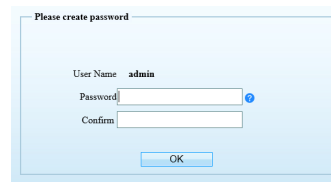
Figure 4-1 Login



NOTE

- There is no default password for the camera. User need create a new password when login for the first time. Shown in figure 4-2

Figure 4-2 Create password

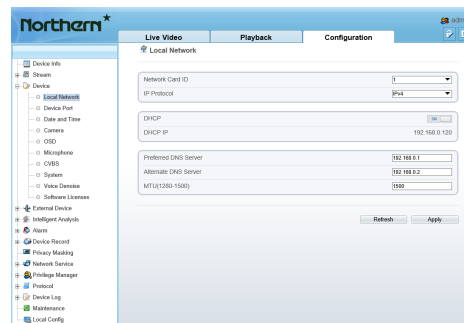


4.2 Modify IP address

Choose **Configuration > Device > Local Network**, the **Local Network** page is displayed. Enter the IP address in the IP Address box and click **Apply** as shown in figure 4-3

After the success of the IP address setting, please use the new IP address to log in the Web interface.

Figure 4-3 Local Network



4.3 Browsing Video

To ensure the real-time video can be played properly, you must perform the following operation when you login the web for the first time:

- Step 1 The Internet Explorer. Choose **Tools > Internet options > Security > Trusted sites > Sites**, in the display dialog box, click **Add**, as shown in figure 4-3.

Step 2 In the Internet Explorer, choose **Tool > Internet Options > Security > Customer level**, and set **Download unsigned ActiveX control and initialize and script ActiveX controls not marked as safe for scripting under ActiveX controls and plug-ins to Enable**, as shown in figure 4-4.

Figure 4-3 Adding a trusted site

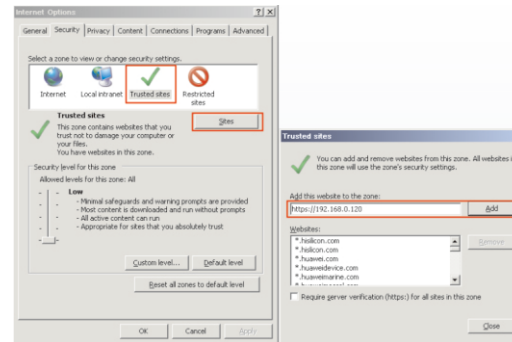
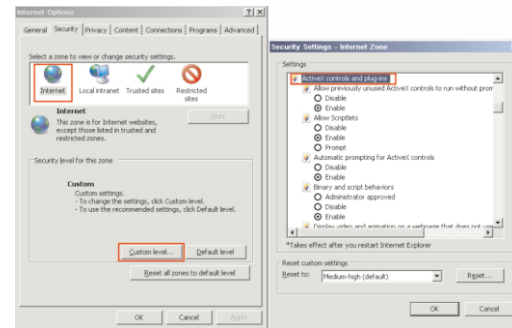


Figure 4-4 Configuring ActiveX control and plug-in



Step 3 Download and install the player control as prompted.

NOTE

If the repair tips are displayed when installing the control, please ignore the prompt, and continue the installation, close the browser during installing. Then login the page again.

To browse a real-time video, login the device and click **Live Video**. The Live Video page is displayed, as shown in figure 4-5.

Figure 4-5 Live Video

