




Quick Guide N2IPKITCAM

Precautions

Fully understand this document before using this device, and strictly observe rules in this document when using this device. If you install this device in public places, provide the tip "You have entered the area of electronic surveillance" in an eye-catching place. Failure to correctly use electrical products may cause fire and severe injuries.

 WARNING	It alerts you to moderate dangers which, if not avoided, may cause minor or moderate injuries.
 CAUTION	It alerts you to risks. Neglect of these risks may cause device damage, data loss, device performance deterioration, or unpredictable results.
 NOTE	It provides additional information.

WARNING

- Strictly observe installation requirements when installing the device. The manufacturer shall not be held responsible for device damage caused by users' non-conformance to these requirements.
- Strictly conform to local electrical safety standards and use power adapters that are marked with the LPS standard when installing and using this device. Otherwise, this device may be damaged.
- Use accessories delivered with this device. The voltage must meet input voltage requirements for this

device.

- If this device is installed in places with unsteady voltage, ground this device to discharge high energy such as electrical surges in order to prevent the power supply from burning out.
- When this device is in use, ensure that no water or any liquid flows into the device. If water or liquid unexpectedly flows into the device, immediately power off the device and disconnect all cables (such as power cables and network cables) from this device.
- Do not focus strong light (such as lighted bulbs or sunlight) on this device. Otherwise, the service life of the image sensor may be shortened.
- If this device is installed in places where thunder and lightning frequently occur, ground the device nearby to discharge high energy such as thunder strikes in order to prevent device damage.

CAUTION

- Avoid heavy loads, intensive shakes, and soaking to prevent damages during transportation and storage. The warranty does not cover any device damage that is caused during secondary packaging and transportation after the original packaging is taken apart.
- Protect this device from fall-down and intensive strikes, keep the device away from magnetic field interference, and do not install the device in places with shaking surfaces or under shocks.
- Clean the device with a soft dry cloth. For stubborn dirt, dip the cloth into slight neutral cleanser, gently wipe the dirt with the cloth, and then dry the device.
- Do not jam the ventilation opening. Follow the installation instructions provided in this document when installing the device.
- Keep the device away from heat sources such as radiators, electric heaters, or other heat equipment.
- Keep the device away from moist, dusty, extremely hot or cold places, or places with strong electric radiation.
- If the device is installed outdoors, take insect- and moisture-proof measures to avoid circuit board corrosion that can affect monitoring.
- Remove the power plug if the device is idle for a long time.
- Before unpacking, check whether the fragile sticker is damaged. If the fragile sticker is damaged, contact customer services or sales personnel. The manufacturer shall not be held responsible for any artificial damage of the fragile sticker.

Special Announcement

- All complete products sold by the manufacturer are delivered along with nameplates, quick setup guide and accessories after strict inspection. The manufacturer shall not be held responsible for counterfeit products.
- The manufacturer will update this manual according to product function enhancement or changes and regularly update the software and hardware described in this manual. Update information will be added to new versions of this manual without prior notice.
- This manual may contain misprints, technology information that is not accurate enough, or product function and operation description that is slightly inconsistent with the actual product, the final interpretation of company is as a standard.
- This manual is only for reference and does not ensure that the information is totally consistent with the actual product. For consistency, see the actual product.

NOTE

For more information, please refer to website.

1 Open Package Examination

Open the package, check the appearance of product for no obvious damage, and confirm the item list for table 1-1 is consistent.

Table 1-1 Packing list

Component	Quantity	Remark
SE Series Network Camera	1	
Quick Setup Guide	1	
Installation location sticker	1	Optional
Accessories package	1	

2 Device Ports

NOTE

Different device may have different multi-head cable, please refer to the actual product.

Figure 2-1 multi-head cable



Table 2-1 Multi-head cable description

ID	Core	Description	Remark
1	Network access port	Connects to a standard Ethernet cable.	
2	Power supply (DC 12V)	Connects to a 12V(-15%~+10%) direct current (DC) power supply.	

3 Quick Configuration(e.g IE)

3.1 Login

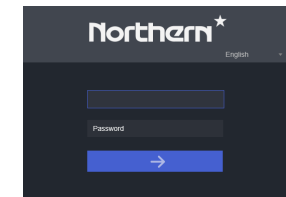
Step 1 Open the Internet Explorer, input the IP address of IP camera (DHCP is on by default) in the IP address box, and press Enter. The login page is displayed, as shown in figure 3-1.

Step 2 Input the user name and password.

NOTE

- Create the password when you log in the system for first time to ensure system security.
- You can change the system display language on the login page.

Figure 3-1 Login



Step 3 Click Login icon, the main page is displayed.

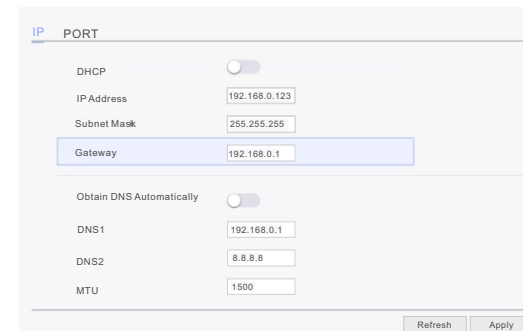
3.2 Modify IP address

Choose **Setting > Network > IP**, the **Network** page is displayed.

Input the IP address in the IP Address box and click **Apply** as shown in figure 3-2.

After the success of the IP address setting, please use the new IP address to log in the Web interface.

Figure 3-2 Network

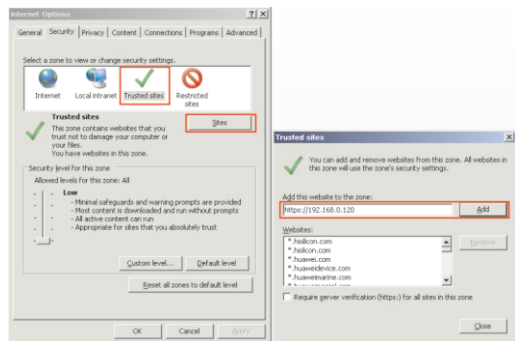


3.3 Browsing Video

To ensure the real-time video can be played properly, user must perform the following operation when you login the web at the first time:

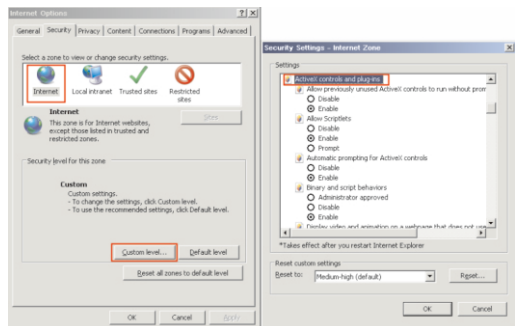
Step 1 In the Internet Explorer, Choose **Tools > Internet options > Security > Trusted sites > Sites**, in the display dialog box, click **Add**, as shown in figure 3-3.

Figure 3-3 Adding a trusted site



Step 2 In the Internet Explorer, choose **Tool > Internet Options > Security > Custom level**, and set **Download unsigned ActiveX control and initialize and script ActiveX controls not marked as safe for scripting under ActiveX controls and plug-ins to Enable**, as shown in figure 3-4.

Figure 3-4 Configuring ActiveX control and plug-in



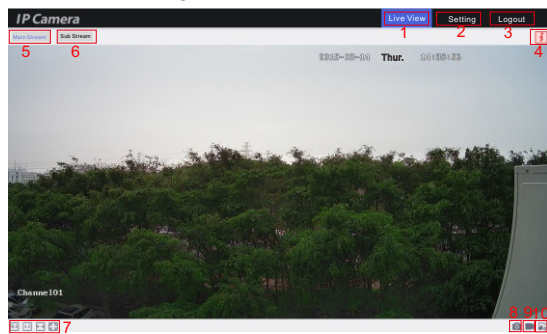
Step 3 Download and install the player control as prompted.

NOTE

If the repair tips displayed when installing the control, please ignore the prompt, and continue the installation, the login page is displayed when the control is loaded.

To browse a real-time video, click **Live View**. The Live Video page is displayed, as shown in figure 3-5.

Figure 3-5 Live Video



Description :

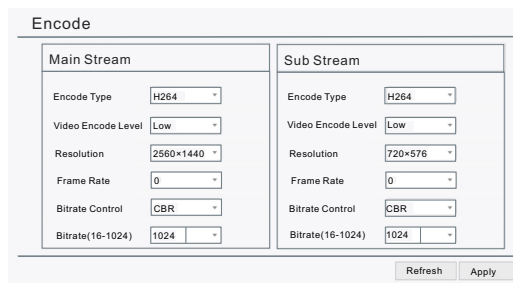
1. User can view the live view.
2. Click **Setting** into the setting interface, set the parameter of device.
3. Click **Logout** to exit the live view interface, user need to input password to login again.
4. The alarm, when the alarm action is happening, the icon will show.
- 5 and 6 to switch the stream.
7. Switch the aspect ratio. Double-click in the video area to enter the full-screen mode, and double-click again to exit.
8. Snapshot, the picture will save to local folder (**Setting > Local**).
9. Record, click this and record the live view and save to local folder.
10. Click the icon to open the Image Setting page. On the Image Setting page, user can set image, scene, WB, daylight, noise reduction, enhance image.

Figure3-6 Information

Information	
Device ID	f0000002219dd3
Device Name	Device
Device Type	IPCAMERA
Model	N2IPKITCAM
Firmware Version	v4.2.1302.0000.003.0.2.2.0

To set the encode parameters, choose "**Setting > Video > Encode**", the "Encode" page is displayed, as shown in figure 3-7.

Figure3-7 Encode

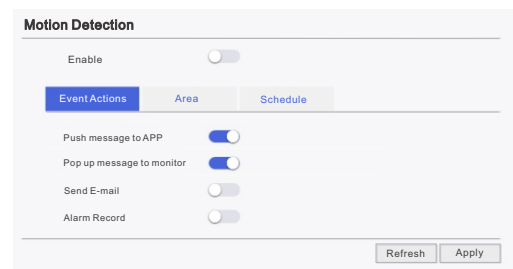


Set the parameters according to the page and click "apply".

- If the message "Apply success!" is displayed, click **OK** to confirm. The system saves the settings.
- If the message "Apply failed!" is displayed, you must apply for the Parameter Configure permission from an administrator.
- If a message indicating that the "bit rate invalid" is displayed, enter a new bit rate value.

To set alarm information, Choose "**Setting > Alarm > Motion Detection**", the page is displayed, as shown in figure 3-8.

Figure3-8 Motion Detection



Click Enable to enable the motion detection alarm.

Event Actions: user can choose four modes to get the alarm messages.

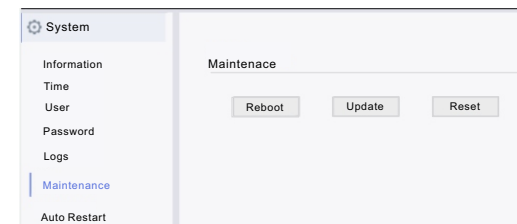
Area: drag the mouse left to choose area to set many areas, double-click left button to delete areas.

Schedule: set the time of opening alarm.

- Click to choose all day and all week.
- Drag the mouse left button to choose hours.
- Choose the hours one by one.

Choose "**Setting > System > Maintenance**" the "Camera Maintenance" is displayed, as shown in figure 3-8. User can reboot, update and reset the camera in this page.

Figure3-9 Camera Maintenance



- Click **Reboot**, the message "Are you sure to restart?" is displayed, then click **OK**, the device is restarted successfully five minutes later.
- Click **Update** to update software, choose software and confirm to update.
- Click **Reset**, the message "Are you sure to reset?" is displayed, then click **OK**, the device is reset to the factory settings.

CAUTION

After you click reset, all parameters will be restored to the factory settings. Use this function carefully.