

Part Number: NBB X G CC



Gang Count Available: X = 1 or 2

Single Gang, Dual Gang

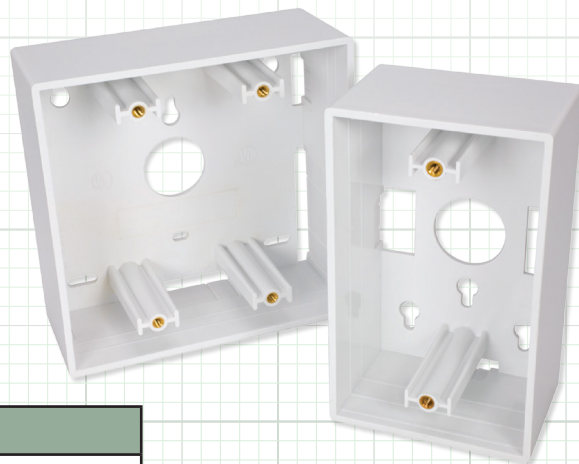
CC = Color Code / Available in:

White, Ivory *

Standard Colors:

WH	White
IV	Ivory

* Other colors available subject to minimum orders



Dimensions:

Single Gang		Inner Dimensions	
Depth	48.0 mm 1.89 in	Inner Depth	55.6 mm 2.19 in
Height	144.0 mm 5.67 in	Inner Height	109.0 mm 4.29 in
Width	69.5 mm 2.73 in	Inner Width	65.0 mm 2.55 in
Dual Gang		Inner Dimensions	
Depth	48.0 mm 1.89 in	Inner Depth	45.0 mm 1.77 in
Height	144.0 mm 5.67 in	Inner Height	109.0 mm 4.29 in
Width	116.5 mm 4.59 in	Inner Width	111.0 mm 4.37 in

Construction Materials:

Material Type	High-Impact
	Flame Retardant
	UL-Rated 94 V-0, Thermoplastic
Finish	Satin

General Specification:

Average Thickness	2.4 mm 0.09 in
Includes	Mounting Screws
	Adhesive Foam Included
Color	White

Environmental Specifications:

cULus UL Safety Standard
UL 94 V-0 Flammability Rating