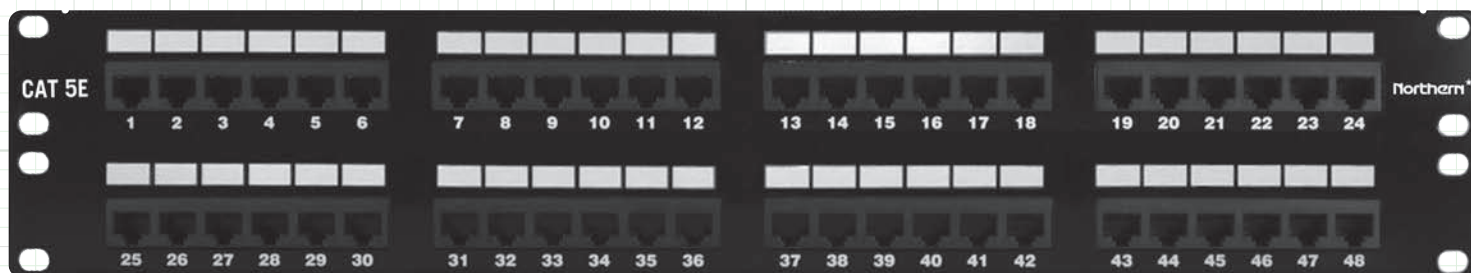


Part Number: **NPP5E48P**



Category 5e 48 port Patch Panel



Application:

Northern 48 port Patch Panels are mounted in 19" Relay Racks and Wall Mount Brackets.

Supports bandwidth up to 100 Hz.
Exceeds ANSI/TIA 568 C.2 Category 5E performance.
Supports network speeds up to 1 GBPS Ethernet.
Supports PoE applications up to 60 Watts.

Physical Specifications:

Length	19"
Height	3.5"
Rack Mount Units	2U
Materials	16 gauge steel black
	PcB and plastic components are UL 94V-0

Mechanical Specifications:

Conductor Gauge, Solid	22 AWG 24 AWG 26 AWG
Conductor Gauge, Stranded	22 AWG 24 AWG
Wiring	T568A T568B
Termination	110 IDC
Replaceable 6 port modules	
Integrated rear side cable management bar, 1 per 1U	

Standards Compliance:

ANSI/TIA 568 C.2 Category 5e Component and Channel compliant
ISO 11801 Class D
ANSI/TIA 1096-A (FCC Part 68)
IEEE 802/3bt PoE up to 60 Watts
UL 1863 Safety Listed

Country of Origin:

Made in Taiwan

Northern Category 5E Products: Jacks, Patch Panels, Patch Cords and Cable

Our Northern Family of Products are System Tested and meet ANSI/TIA CAT 5E Component, Permanent link and Channel Requirements.
Use these components when building your 5E solution:

Cable: N5ER**CC**1BX, N5EP**CC**1BX
 Jacks: NJK5E**CC**, NJK5EHD**CC**
 Patch Panels: NPP5E12PM, NPP5E24P, NPP5E48P
 Patch Cords: NPC5E**LLCC**

Other Northern Components Needed To Complete A System Solution:

Faceplates: NFPP**CC**, NFPP**CC**ID
 Surface Mount Boxes: NSMB**PCC**
 Modular Patch Panels: NPPMOD12PM, NPPMOD24P, NPPMOD48P
 Racks: NRR45U2P, NRR45U4P,
 Fixed Wall Racks: NWMRR241918, NWMRR361918, WMRR481918
 Swing-Out Wall Racks: NRRSWM1924, NRRSWM1936, NRRSWM1948
 Hinged Wall Mount Bracket: NHWB1U6BK, NHWB2U6BK, NHWB3U6BK, NHWB4U6BK
 Horizontal Cable Managers: NHCMFS1U, NHCMFS2U, NHCMD51U, NHCMD52U
 Vertical Cable Managers: NVWM**XXXX** SEE CATALOG
 Ladder Rack System: NLR1210 SEE CATALOG FOR OPTIONS

Part # Color Legend: **CC** = Color

White	WH
Blue	BL
Black	BK
Ivory	IV
Light Almond	LA
Orange	OR
Red	RD
Yellow	YL

Patch Cord Length Legend: **LL** = Available Length

Patch Cords are available in 1, 2, 3, 5, 7,10, 15, 20, 25, 35, 50, 75, 100 foot lengths

P = Port Count

Faceplate and Surface Mount Boxes available in 1, 2, 3, 4 ,6 port

* Other colors available subject to minimum orders