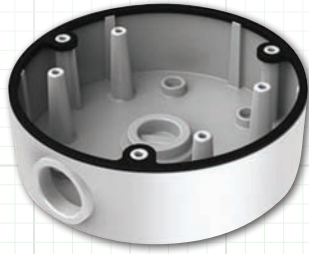


Back Box for Dome Cameras



BB110

FOR USE WITH THESE Northern[★] CAMERAS:



IP3D



IP4D



IP4D4MM

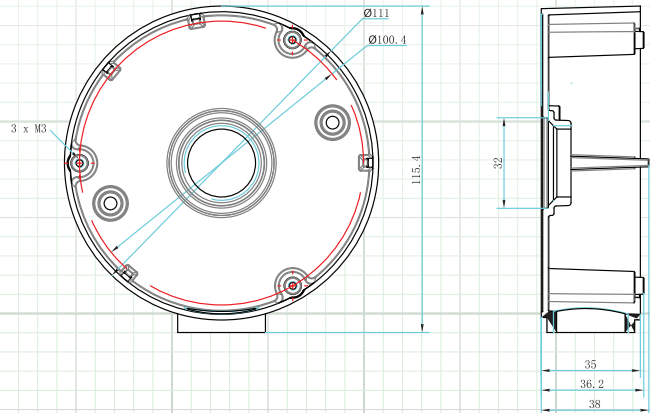
FEATURES:

- ◆ Aluminum Alloy Material with Surface Spray Treatment
- ◆ Waterproof Design

NOTE:

- ◆ Pay attention to color matching.

MOUNT DIMENSIONS:



SPECIFICATION	BB110
Color	White
Application	Back Box for Dome Camera
Construction	Aluminum Alloy
Dimensions	Ø115.4 mm x 40 mm (4.54" x 1.57")
Weight	155 g (5.47 ozs)

Note: Specification subject to change without notice