

Recessed Ceiling Mount for Dome Cameras



CMR1

FOR USE WITH THESE Northern[★] CAMERAS:

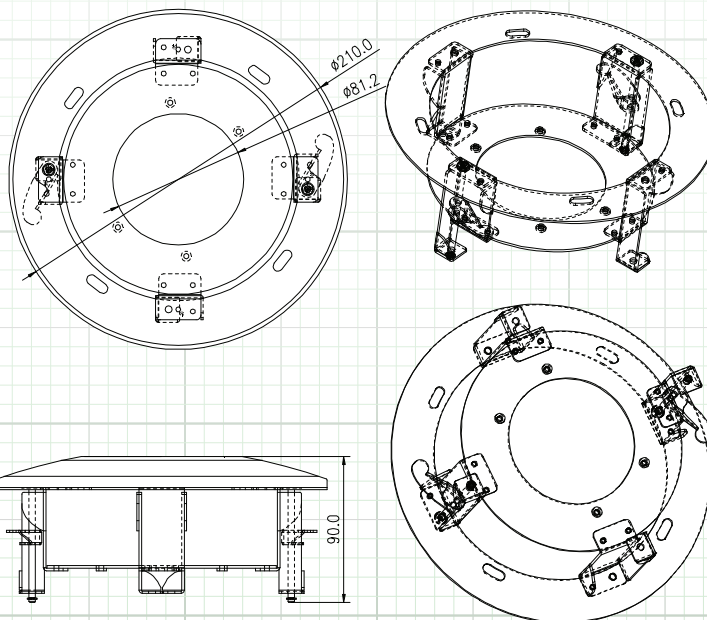


IP3VFD



IP4MVFD

MOUNT DIMENSIONS:



FEATURES:

- ◆ For In-Ceiling Mounting
- ◆ Aluminum Alloy Material with Surface Spray Treatment

NOTE:

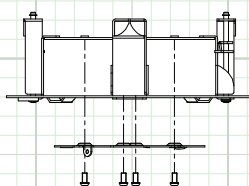
- ◆ Install bracket on flat ceiling.
- ◆ The ceiling must be capable of supporting more than three times the weight of camera and mount.
- ◆ Load capacity is 4.5 kg.

SPECIFICATION	CMR1
Color	White
Application	Dome Camera Recessed Ceiling Mount
Construction	Aluminum Alloy
Dimensions	Ø210mm x 90mm (8.27" x 3.54")
Weight	600g (21.16oz)

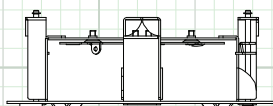
Note: Specification subject to change without notice

INSTALLATION:

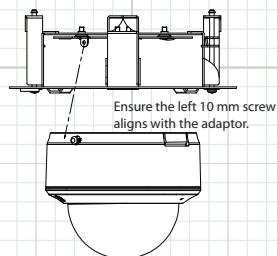
1. Choose flat ceiling for installation and screw on the adaptor.



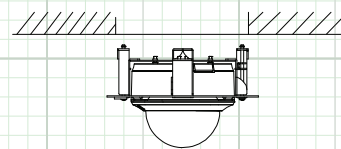
2. Complete the adaptor installation.



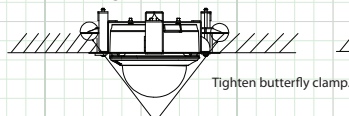
3. Screw on the dome camera.



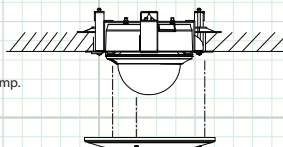
4. Insert the dome camera and mount to the ceiling.



5. Screw the butterfly clamp in clockwise and clamp the mount to the ceiling.



6. Tighten three screws to fix cap ring.



7. Installation complete.

