

700 Line Outdoor IR Dome Cameras w/OSD

Sony 960H Chip, WDR, OSD, DNR, 90' IR Range, 2.8~12mm Lens



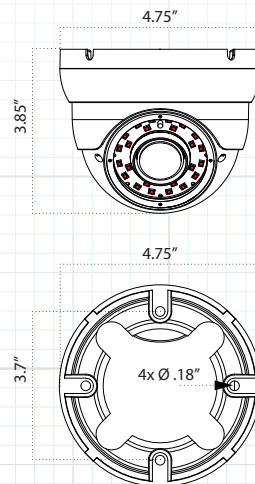
DWMVFIR960



DWMVFIRW960



In-Line Cable Mounted OSD Control



Camera Dimensions

SPECIFICATIONS	DWMVFIR960	DWMVFIRW960
Imaging Device	960H 1/3" SONY Super HAD II CCD	
Resolution	700 TV Lines	
Minimum Illumination	0.0 Lux (IR LED On)	
Lens Size	2.8~12mm Varifocal	
IR LED Range / IR LED Count	90 Feet / 24 Pieces	
IR LED Wavelength	850nm	
Maximum Aperture	F1.2~2.0	
S/N Ratio	More than 52db	
Electronic Shutter Speed	AUTO, FLK, 1-60 ~ 1/100,000	
OSD (On Screen Display)	Yes (Cable Mounted Control)	
BLC (Backlight Compensation)	OFF / BLC / HBLC	
AGC Automatic Gain Control	AUTO / MANUAL	
White Balance	ATW, MANUAL, USER 1, USER 2	
Day-Night	COLOR / BW / AUTO	
DNR (Digital Noise Reduction)	ON / OFF	
D-WDR (Digital Wide Dynamic Range)	ON / OFF / LUMINANCE / CONTRAST	
Motion Detection	ON / OFF 4 - Zones Programmable	
Privacy Masking	ON / OFF 8 - Zones Programmable	
Sharpness	(Adjustable 1~255)	
TV System	NTSC	
Effective Pixels	976 (H) X 495 (V)	
Scanning System	2:1 Interlaced	
Sync System	Internal Negative Sync	
Video Output	1.0Vp-p 75 OHM Composite BNC	
Gamma Characteristics	0.45	
Power Requirement / Consumption	12 Volts DC / 400mA	
Operating Temperature	-14°F ~ 122°F	
Weight	1.6 Lb.	
Housing / Color	Aluminum (Gray)	Aluminum (White)
Dimension	4.7" W x 3.3" H	
Weatherproof Rating	IP66	

Note: Specification subject to change without notice

FEATURES

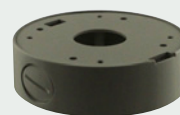
- ◆ Sony 960H Chip / 700 Line Resolution
- ◆ 3-Axis Wall or Ceiling Mountable
- ◆ OSD Control of All Major Functions
- ◆ Digital Wide Dynamic Range
- ◆ Digital Noise Reduction
- ◆ Day/Night Operation
- ◆ 2.8~12mm Varifocal Lens
- ◆ 24 IR LED's / 90 Foot IR Range
- ◆ Tamper Resistant
- ◆ IP66 Weatherproof Rating
- ◆ 12 Volts DC Power Required

PACKAGE CONTENTS

1. Camera
1. User Manual
1. Mounting Screws



RECOMMENDED ACCESSORIES



DWMVFBB
Gray Back Box



DWMVFBBW
White Back Box