



Quick Guide

Precautions

Fully read this document before using this device, and strictly observe rules in this document when using this device.

	WARNING It alerts you to moderate dangers which, if not avoided, may cause minor or moderate injuries.
	CAUTION It alerts you to risks. Neglect of these risks may cause device damage, data loss, device performance deterioration, or unpredictable results.
	NOTE It provides additional information.

WARNING

- Strictly observe installation requirements when installing the device. The manufacturer shall not be held responsible for device damage caused by users' non-conformance to these requirements.
- Strictly conform to local electrical standards.
- The voltage must meet input voltage requirements for this device.
- If this device is installed in places with unsteady voltage, ground this device to discharge high energy such as electrical surges in order to prevent the power supply from burning out.
- Do not expose internal components to water or moisture.
- Do not focus strong light (such as lighted bulbs or sunlight) on this device. Otherwise, the service life of the image sensor may be shortened.
- If this device is installed in places where thunder and lightning frequently occur, ground the device nearby to discharge high energy such as thunder strikes in order to prevent device damage.

CAUTION

- Avoid heavy loads, intensive shakes, and soaking to prevent damages during transportation and storage. The warranty does not cover any device damage that is caused during secondary packaging and transportation after the original packaging is taken apart.
- Protect this device from dropping, keep the device away from magnetic field interference, and do not install the device in places with unstable surfaces.
- Clean the device with a soft dry cloth. For stubborn dirt, dip the cloth into slight neutral cleanser, gently wipe the dirt with the cloth, and then dry the device.
- Keep the device away from heat sources such as radiators, electric heaters, or other heat equipment.
- Keep the device away from moist, dusty, extremely hot or cold places, or places with strong electric radiation.
- Remove the power plug if the device is idle for a long time.

Special Announcement

- The manufacturer will update this manual according to product function enhancement or changes. Update information will be added to new versions of this manual without prior notice.
- This manual is only for reference and does not ensure that the information is totally consistent with the actual product. For consistency, see the actual product.

NOTE

For more information, please refer to website: www.northernvideo.com

1 Open Package Examination

Open the package, check the appearance of product for no obvious damage, and confirm the item list for table 1-1 is consistent.

Table 1-1 Packing list

Component	Quantity	Remark
Bullet HDVI Camera	1	
Quick Setup Guide	1	
Installation location sticker	1	
L wrench	1	
Black stainless self-tapping screw PA4.0×30mm	4	
Plastic anchors φ5.6×29mm	4	

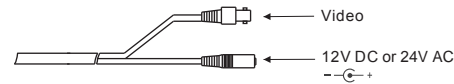
2 Camera Cable Connection

2.1 Power and video cables

Insert power lead into power connector (insure proper voltage is supplied and observe polarity).

Insert video lead into BNC connector (push, then twist to lock BNC connector in place).

Figure 2-1 Power and video cable



2.2 OSD Control: Use In-Line OSD control to select format:

Press the Joystick button on the cable mounted OSD control to access the OSD menu.

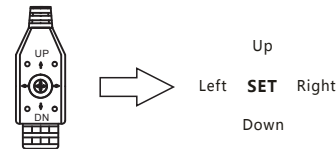
960H Mode : Push OSD UP for 5 seconds

AHD Mode : Push OSD LEFT for 5 seconds

CVI Mode : Push OSD DOWN for 5 seconds

TVI Mode : Push OSD RIGHT for 5 seconds

Figure 2-2 Function keys



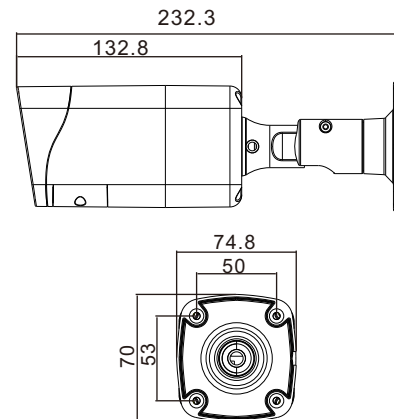
3 Camera Overview

3.1 Camera Dimensions

NOTE

Different device may have different dimensions, please refer to the actual product.

Figure 3-1 Dimensions (Unit: mm)

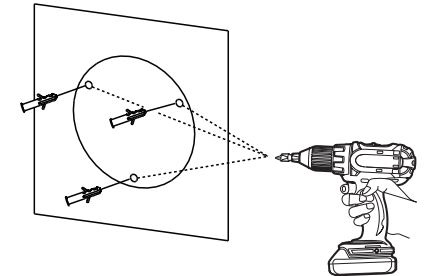


4 Device Installation

The Camera can be installed on the ceiling or wall.

If the camera is installed on a concrete wall, install the plastic anchors before installing the bracket. If the camera is installed on a wooden wall, use self-tapping screws to install the bracket directly.

Figure 4-1 Installing camera



Installation Steps:

Step 1 Stick the Installation location sticker on the ceiling or wall, Drill three holes based on the marks on the sticker. Drive the swell plastic buttons into the holes.

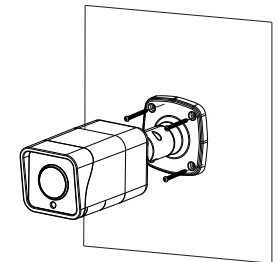
Step 2 Connect the BNC cable.

NOTE

you can route cables from the top or from aside. If you use the top routing method, drill a hole in the surface first. If you use the aside routing method. When you route cables from aside, Please route the multi-head cable out from the side gap at the bottom of the camera.

Step 3 Install the camera on the ceiling or wall, and fix the screws as shown in figure 4-5.

Figure 4-5 Installing camera



Step 4 Loosen the fixing screw and locking ring to adjust the position so that the camera faces the monitored area, then tighten the locking ring and the fixing screw, as shown in figure 4-6.

Figure 4-6 Adjusting the monitoring direction

