

7" IP, TVI, CVI, AHD & 960H Service Monitor



USER GUIDE

- Thank you for purchasing the IP camera tester. Please read this manual before using the IP camera tester to insure proper use.
- For Safety purposes please read the Safety Information section in the manual carefully.
- The manual should be retained and available for reference.
- The included Micro-SD Card contains files needed for re-installing Apps. Please save these files for easy reinstallation of any Apps removed from the tester.
- If there are any questions or problems while using the IP camera tester please call 855-388-7422 or email techsupport@northernvideo.com for support.

Contents

1 .Safety information-----	1
2. IP Camera Tester Introduction -----	2
2.1 General -----	2
2.4 Packing list -----	2
2.5 Function interface -----	3
3. Operation-----	6
3.1 Installing the Battery-----	6
3.2 Instrument connection -----	7
3.2.1 IP camera connection-----	7
3.2.2 Analog camera connection -----	8
3.2.3 HD Coaxial camera connection -----	8
3.2.4 HDMI IN -----	9
3.3 OSD menu-----	10
3.3.1 Lite mode& Normal mode -----	10
3.3.2 Drop-down Menu -----	13
3.3.3 Short cut-menu -----	14
3.3.4 Screen capture -----	15
3.3.5 Tester Play -----	16
3.3.6 Rapid video -----	17
3.3.7 IP discovery-----	18
3.3.8 Rapid ONVIF test-----	19
3.3.9 IP camera test-----	35
3.3.10 HDMI IN-----	37
3.3.11 Video monitor test-----	41
3.3.12 Color-bar generator (TV OUT) -----	48
3.3.13 CVI camera test-----	50

3.3.14 TVI camera test -----	57
3.3.15 AHD camera test-----	59
3.3.16 Network tool-----	60
(1) IP address scan -----	60
(2) PING Test -----	61
(3) Network test (Ethernet bandwidth test) -----	61
(4) Port Flashing -----	65
(5) DHCP server -----	66
(6) Trace route -----	66
(7) Link monitor -----	67
3.3.17 Rapid IP Discovery-----	68
3.3.18 PoE power / DC12V 2A and DC 5V 2A USB power output-----	69
3.3.19 Cable Test -----	70
3.3.20 RJ45 cable TDR test -----	71
3.3.21 PoE Voltage test -----	74
3.3.22 12V power input test-----	75
3.3.23 Audio Record-----	75
3.3.24 Data monitor-----	76
3.3.25 Audio player-----	76
3.3.26 Media Player -----	77
3.3.27 RTSP Player-----	78
3.3.28 Hik test tool-----	79
3.3.29 Dahua test tool -----	82
3.3.30 Update -----	86
3.3.31 Office -----	87
3.3.32 LED Flashlight -----	87
3.3.33 Browser-----	88
3.3.34 Notepad-----	88
3.3.35 System Setting -----	89

3.3.36 File explorer -----	93
3.3.37 Theme-----	95
3. 4 Audio test -----	97
3.5 HDMI output-----	98
3.6 PoE power output -----	98
3.7 DC12V 2A power output -----	99
4. Specifications-----	101
4.1 General Specifications-----	101

1 .Safety information

- ◆ This tester is intended for use in compliance with local electrical usage rules and regulations. Avoid using the tester in any places which are inapplicable for the use of electronics such as hospitals, gas stations etc.
- ◆ To avoid damage do not expose the tester to moisture or liquids.
- ◆ During transportation and use, it is highly recommended to avoid violent collisions and vibrations which could damage components and cause failure.
- ◆ Do not leave the tester alone while charging and recharging. If the battery is found to be severely hot, the tester should be removed from the electric source at once. The tester should not be charged over 8 hours.
- ◆ Do not use the tester where the humidity is high. If the tester becomes damp, remove power and any other connected cables immediately.
- ◆ The tester should not be used in a flammable gas environment.
- ◆ Do not disassemble the tester, there are no user serviceable components inside. If disassembly is necessary please contact a qualified service technician.
- ◆ The tester should not be used in an environment with strong electromagnetic interference.
- ◆ Do not use detergent to clean the tester. The use of only a dry soft cloth is recommended for cleaning. If the dirt is not easy to remove use only a small amount of water and neutral detergent for cleaning.

2. IP Camera Tester Introduction

2.1 General



















The 7 inch touch screen IP camera monitor is designed for maintenance and installation of IP cameras, Standard 960H analog cameras and High Definition TVI, CVI & AHD cameras, as well as testing 4K H.264 /4K H.265 camera via mainstream, The 1280x800 resolution enables it to display network HD cameras and analog cameras in high resolution. The unit supports many ONVIF PTZ and analog PTZ control. The combination of touch screen and key buttons make the IP camera tester very user-friendly. The tester is also a great tool for Ethernet network testing. It can test PoE power voltage, PING, and IP address searching. You can use the blue cable tracer to locate individual connected cables from a bundle of cables. Test LAN cable for proper connection termination. Other functions include providing 24W PoE power to your camera, HDMI IN and OUT, CVBS loop test, testing IP and analog at the same time, LED Flashlight, DC 12V 2A power output and much more. Its portable, user-friendly design and many other functions make the IP tester an essential tool for all installers or technicians.

2.4 Packing list

- 1) Tester
- 2) Charger – 12Volt DC / 2Amp
- 3) Network cable tester
- 4) Polymer lithium ion battery (7.4V DC 5000mAh)
- 5) BNC to BNC cable
- 6) RS485 Cable (Molex to Alligator Clip)
- 7) Power output cable
- 8) Audio Cable (3.5mm to Alligator Clip)
- 9) Protective Case
- 10) Safety Lanyard
- 11) User Manual
- 12) 8GB SD Card

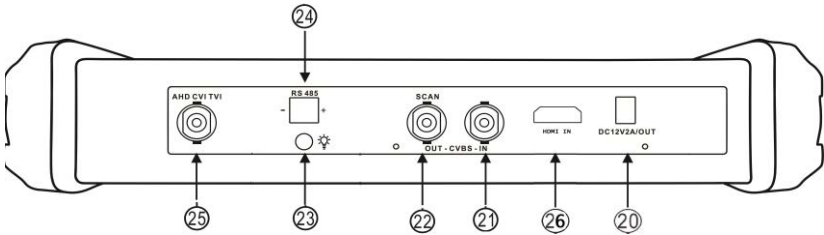
2.5 Function interface



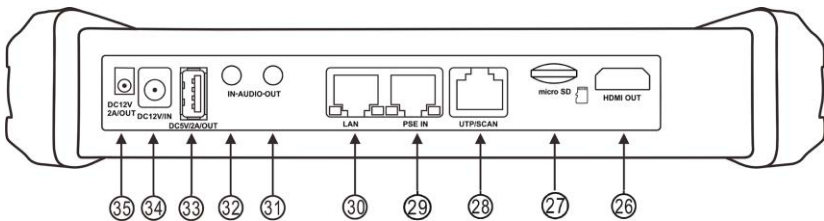
1		Press more than 2 seconds, turn on or off the device ,short press to turn on or off the menu display
2		Menu key, press it to call up the quick menu
3		4x zoom on the image
4		Far focus: Focus the image faraway
5		Near focus: Focus the image nearby
6		TELE: zoom in the image
7		WIDE: zoom out the image
8		Open/set ,Confirm the setting of parameters, open or enlarge the aperture
9		Return/Close : Return or cancel while setting parameters of the menu, close or decrease the aperture
10		Upward, set function or add parameter. Tilt the PTZ upward
11		Rightward, select the parameter whose value will be changed. Add the value of the parameter. Pan the PTZ right
12		Downward, set function or reduce the value of the parameter. Tilt the PTZ downward
13		Leftward, select the parameter whose value will be changed
14		Confirm key,(Long press it to capture screen interface)
15		Return/Close : Return or cancel while setting parameters of the menu, close or decrease the aperture
16		The charge indicator: it lights red while the battery is being charged. As the charging is complete, the indicator turns off automatically
17		The RS485 data transmission indicator: it lights red while the data is being transmitted
18		The data received indicator: it lights red while the data is being received



Top interface



Bottom interface



20 DC12V2A power output , for provisional DC power supply

21 Video image (BNC interface)

22 Video signal output (BNC interface)

23 LED lamp

24 RS485 Interface: RS485communication for the PTZ

25 AHD/TVI/CVI signal input (BNC interface)

26 HDMI Input (Top Interface) / HDMI Output (Bottom Interface)

27 Micro SD card moveable,(comes with 8GB, supports up to 32GB)

28 UTP cable port: UTP cable tester port/ Cable tracer port

29 PSE power sourcing equipment. Tests PoE voltage


30	PoE power supply output or LAN test port (Use to test PoE or non-PoE IP camera)
31	Audio output and earphone interface
32	Audio input
33	USB 5V 2A power output (used only for power, not data)
34	DC12V2A charging interface
35	DC12V2A power output , for provisional DC power supply

3. Operation

3.1 Installing the Battery

The tester has built-in lithium ion polymer rechargeable battery. Remove the battery contact protector prior to use.

Battery does not need to be removed after normal use, removal is recommended if tester is not used for an extended length of time.

Pressing the key  continuously can power on or off the tester.



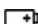
Notice: ONLY use the original charging adaptor and connected cable that ships with the device.

Use of any other charging adapters can damage the unit.




When the battery icon is full or the charge indicator turns off automatically it indicates the battery charging is completed.



Notice: When the Charge Indicator  turns off, the battery is approximately 90% charged.

The charging time can be extended for about 1 hour and the charging time within 12 hours will not damage the battery.



Notice: Press the key  for several seconds to restore the default settings when the instrument works abnormally.

3.2 Instrument connection

3.2.1 IP camera connection

Power an IP camera with an independent power supply, then connect the IP camera to the IPC tester's LAN port, if the link indicator of the tester's LAN port is green and the data indicator flickers, it means the IP camera and the IPC tester are communicating. If the two indicators don't flicker, check if the IP camera is powered on or the network cable is not functioning properly.



Note:

1) If the IP camera requires PoE power, then connect the IP camera to the IP tester's LAN port. The tester will supply PoE Power for the IP camera. Click on the icon POE to turn the PoE Power off or on.

2) If use the tester's menu to turn off the tester's PoE power supply, the PoE switch and the power sourcing equipment are allowed to connect to the tester's PSE port, and the PoE power will be supplied to the IP camera by the tester's LAN port. On this condition, the tester cannot receive data from IP camera, but the computer connected to the PoE switch can receive the data via the tester.



Warning: PoE switch or PSE power sourcing equipment only can be connected to tester "PSE IN" port, otherwise will damage the tester.

3.2.2 Analog camera connection



- (1) Connect the camera's video output to the IP tester's VIDEO IN. The image will display on the tester after pushing the PTZ icon.
- (2) CCTV IP Tester "VIDEO OUT" interface connect to the Video input of monitor and optical video transmitter and receiver, the image display on the tester and monitor.
- (3) Connect the camera or the speed dome RS485 controller cable to the tester RS485 interface. (Note: positive and negative connection of the cable)

3.2.3 HD Coaxial camera connection

* TVI, CVI, and AHD cameras are classified as HD coaxial cameras. Hereby the following instruction of how to connect TVI camera to the tester is also applied to CVI and AHD cameras.




- (1) Connect the TVI camera's video output to the IP tester's "AHD CVI TVI" interface, the image will display on the tester. The tester only come with HD Analog input interface. There is no HD Analog output interface.
- (2) Connect the TVI camera or the speed dome RS485 controller cable to the tester RS485 interface.

3.2.4 HDMI IN





DVR or other device's HDMI in port connect to tester's HDMI in port, the meter will display input image.

3.3 OSD menu

Press the key  2 seconds to turn on

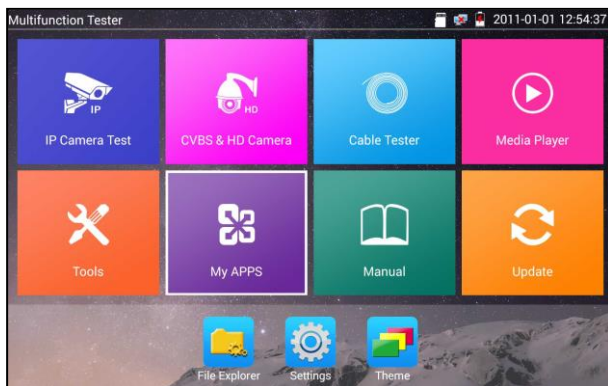
Press the key  again to turn off

short press the key  to enter sleep mode, press it again to test.

If the tester works abnormally, press and hold the  key for several seconds to turn off, the tester will reset.

3.3.1 Lite mode& Normal mode

- Lite mode: You can easy find corresponding apps



- In Lite mode, Press the icon several seconds, can move the icon to other apps



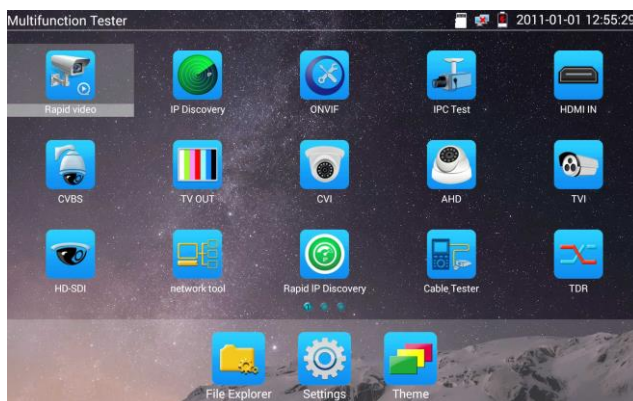
- In lite mode, click the finger icon in the lower right corner to release lock icon, move icons and change function icons sequence.

Normal mode

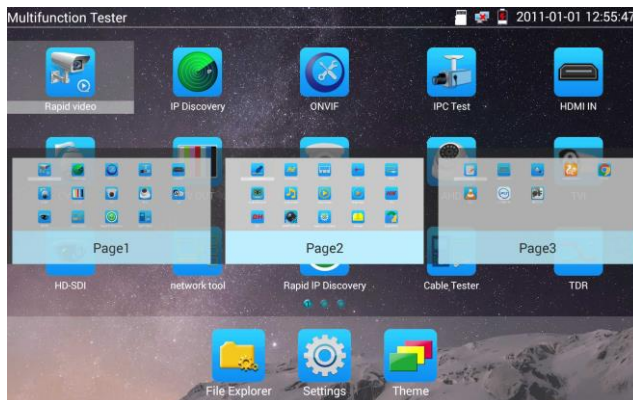
- Tap the screen and slide left or right to change menu.



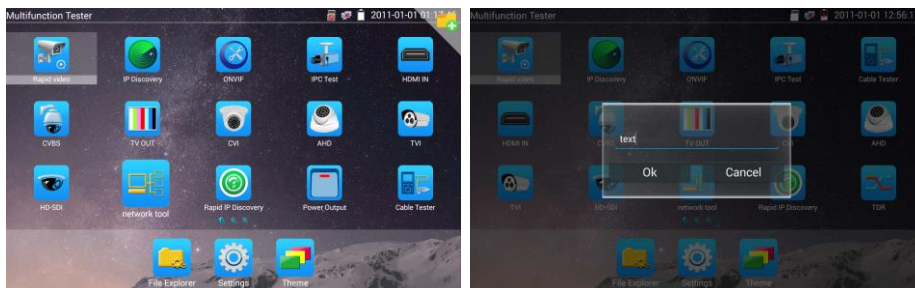
In normal mode, press icon several seconds, go screen management status. Change icons sequence and move it to common tools bar.




You can move the icon to any page and self-define the number of icons in any page.



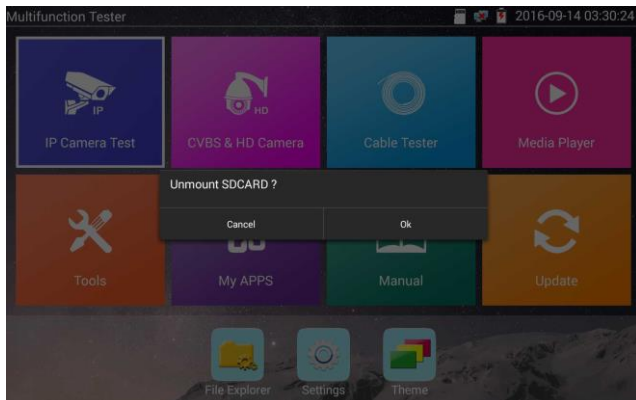
Create New Folder: Drag the icon to the folder in top right corner, enter the folder name. Icon will be auto placed in the new named folder.



Press the folder several seconds, to change the folder name, you can move the icon out of folder, the folder will be auto deleted until move out all icons.

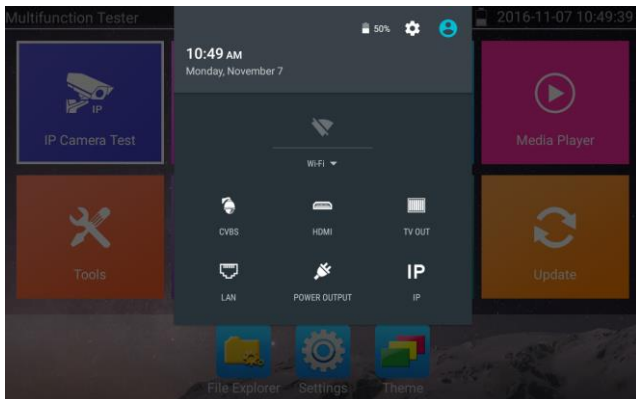
Select Icons to enter, if quit, please click 

Click SD card, install or remove SD card.



3.3.2 Drop-down Menu

Press and slide at right top right corner twice to open shortcut menu. The shortcut menu includes POE power output, IP settings, Wi-Fi, HDMI IN, CVBS, Video OUT, LAN, Brightness, settings etc.



HDMI: Click HDMI IN to enter, In HDMI IN mode, it can converter test from analog to digital

with dual test window IP & HDMIN or Analog & HDMI in.

CVBS: Click icon “CVBS “to enter, you can test IP and analog camera at the same time.

Video OUT: Click Video OUT to enter floating window, connecting the BNC cable to tester and appears analog video monitor interface, it can test circuit and BNC cable whether normal.

LAN: Display network port or WIFI connection real-time upload and download speeds and other network parameters.

Brightness: Set brightness.

Settings: Enter settings interface.

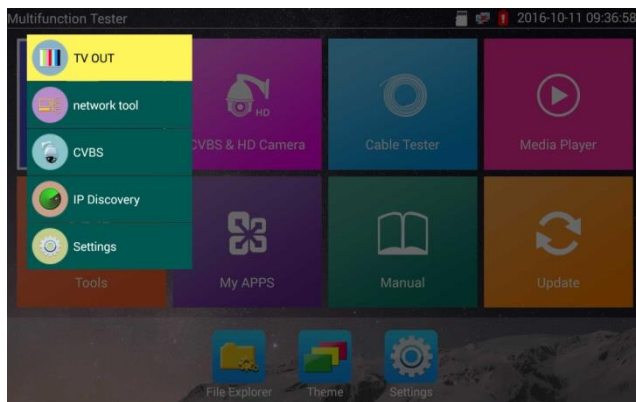
IP: Enter IP Settings interface.



POE power output: Turn on or off the tester “PoE power “app.

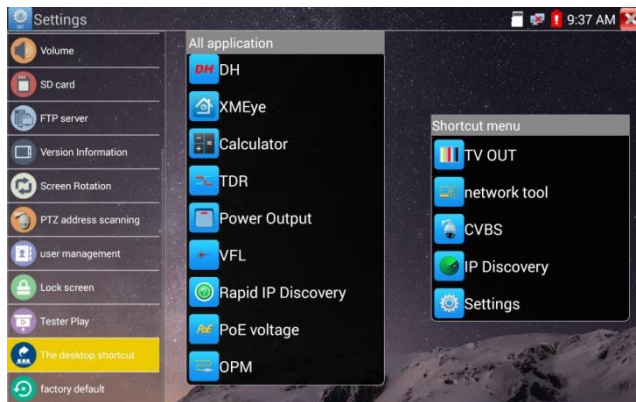
WLAN: Turn on WLAN net and displays current WLAN status.

3.3.3 Short cut-menu

You can call shortcut –menu by press tester’s “menu” key, you can self- define shortcut -menu.



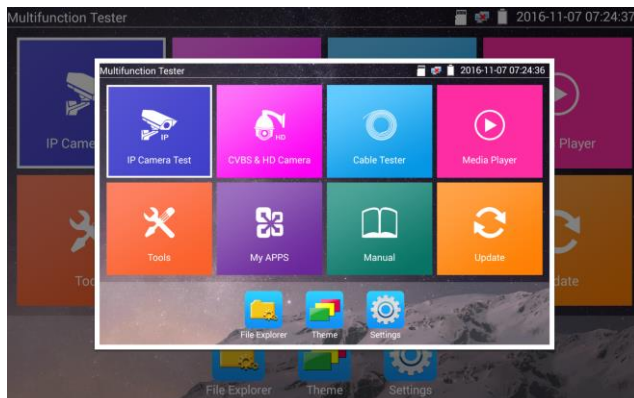
Press the key“  ”, you can turn on it, and switch functions, then press  to enter app, tap other area on the screen, to exit the menu.



Short cut-menu setting, you can long press any app in the all applications list, it will auto move to shortcut menu. If delete any app in the short cut – menu, please select an app and press several seconds, it will be deleted.

3.3.4 Screen capture


Long press the key “enter” can capture screen interface and save it in any time.

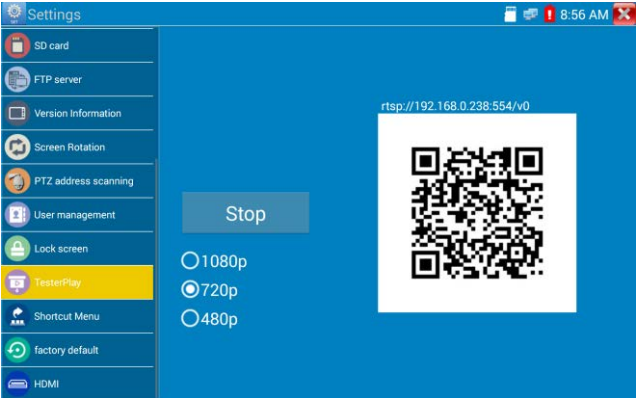


You can go file management to view “file Explorer –SDcard- Pictures—Screenshots.

3.3.5 Tester Play

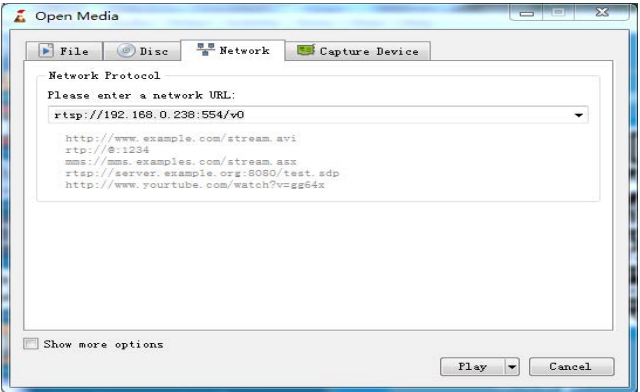
Mobile screen projection (Only for android version)

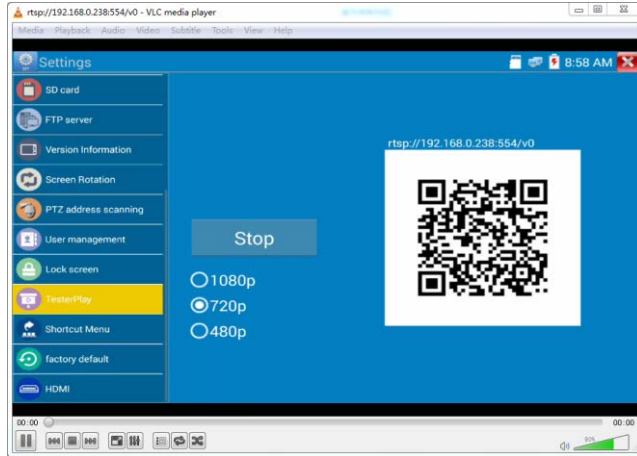
The meter creates WIFI hotspot, connect mobile phone to the tester's WIFI hotspot, or the tester and mobile phone connect to the same Wi-Fi network. Tap icon “”, then select “Tester Play” app to enter, the meter generates two-dimensional code, Please use mobile phone scan it, then download and install the client software, you can view the screen real-time projection.




PC screen projection:

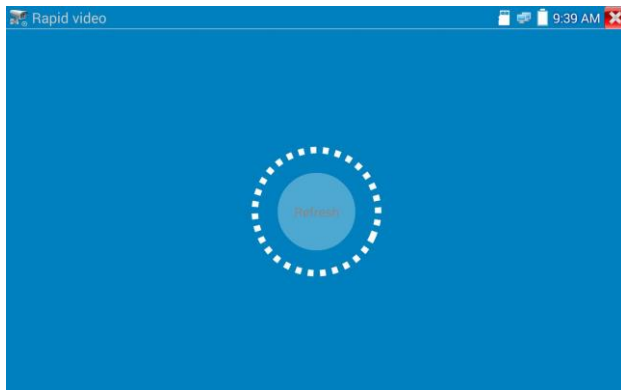
Install VLC player in the PC, turn on the VLC player "Media - Open Network Streaming", and input the RTSP address of on the top instrument two-dimensional code, click "play" to view the screen real-time projection.



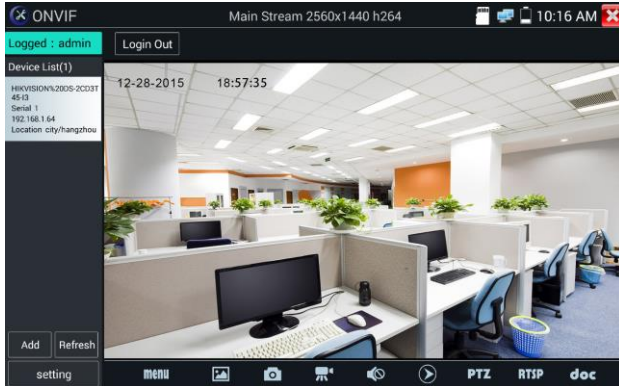


3.3.6 Rapid video

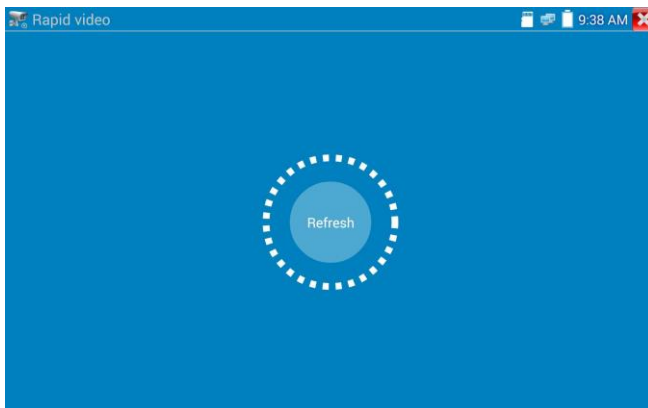
Press the  icon to enter, one key to detect all network cameras and auto play the images.




Auto log in and display camera image. For detailed operation refer to ONVIF function.

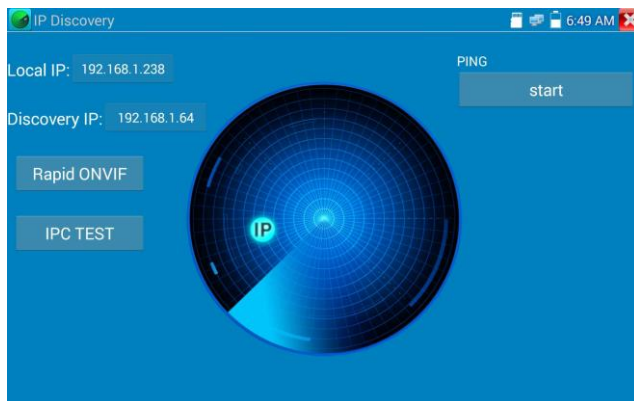


After entering the ONVIF app, click refresh to search ip address.



3.3.7 IP discovery

Press IP discovery  tester auto-scans the whole network segment IP, as well as auto-modify the tester's IP to the same network segment with the scanned camera's IP.



Local IP: Tester's IP address, Tester can auto-modify the tester's IP to the same network segment with the scanned camera's IP

Discovery IP: Connected tester equipment's IP address. If the camera connected to the tester directly, tester will display the camera's IP address, if tester connects to Local Area Network, it displays the current IP address.

Temp IIP: after searching IP address, the modified tester's IP address will not be saved, if you do not select "Temp IP," the modified tester's IP address will auto-save after searching.

Start: PING function, Click "Start", can PING camera's IP.


Rapid ONVIF: Rapid ONVIF Quick link

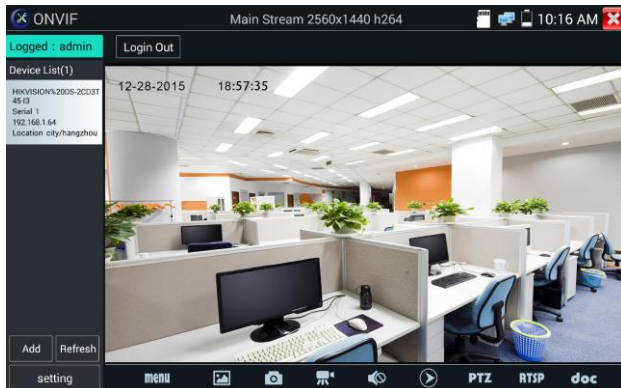
IPC TEST: IPC TEST Quick link

Applicability: Using IP discovery app ,you don't need to know the first two digits of camera's IP address , it can auto-scan the whole network segment IP, and auto-modify tester's IP address , greatly improved engineering efficiency .

3.3.8 Rapid ONVIF test

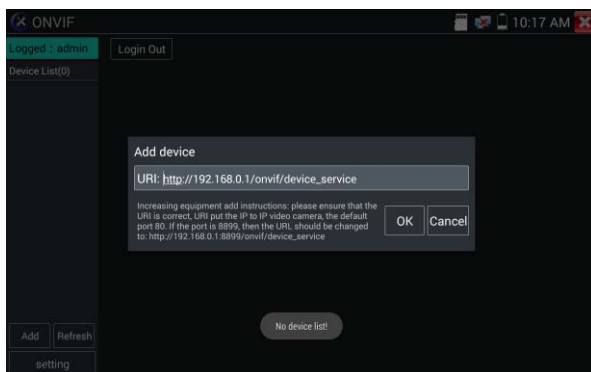
Rapid ONVIF can display 4K H.265/H.264 camera image by tester mainstream, one key to activate Hikvision camera.

Press  to enter ONVIF function, the meter auto scan all ONVIF cameras in different network



segments. It lists cameras name and IP address on the Left of screen. Tester can auto login camera and display camera image. Factory default use admin password to auto login, if you modified the password, then default use the modified password to log in.

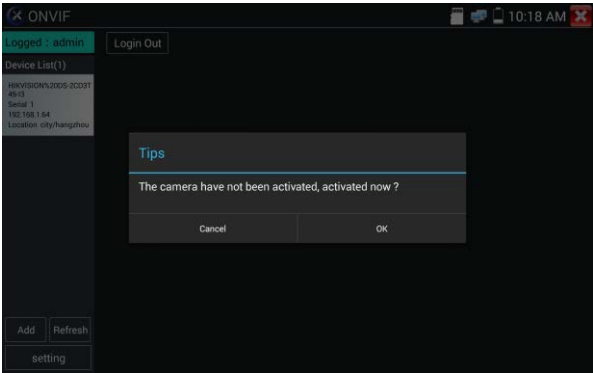
If you select ONVIF Rapid mode, the meter automatically scan different network segments for ONVIF cameras. It lists the camera name and IP address on the Device List. Tester can auto login camera and display camera image.



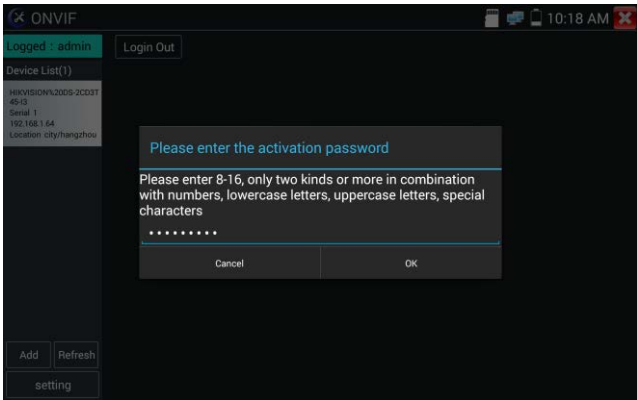
Click the button “Refresh, tester will scan the ONVIF camera again. Click the newly displayed ONVIF

camera on the “Device List“. The tester will show the IP camera’s relative information and settings.

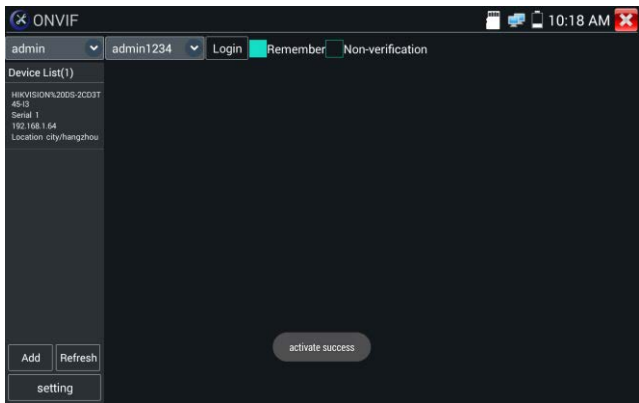
Activate HIKVISION Camera: When connected inactivated HIKVISION Camera, tester can auto recognized and prompt "The camera is not active, you need to activate it", click "OK" to start activate.



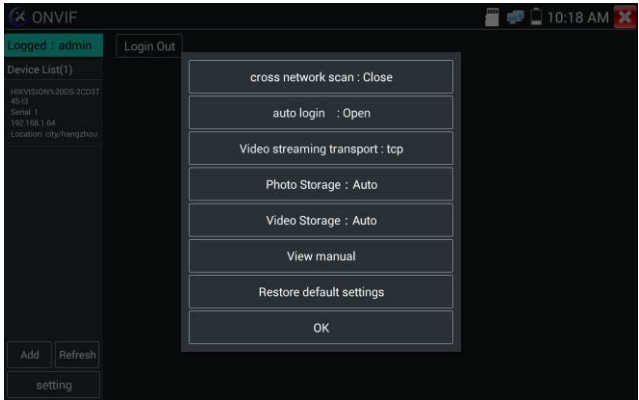
Enter a new password for the camera



When the prompt “activate success” is displayed, click login to display camera image.



Pop-up settings menu when click the “ONVIF setting” icon in the upper left corner.



Across network segments scan: After open this function , enter “Setting”-“IP Settings”-“Advanced” to add other network segments IP, Rapid ONVIF function can across network segments to scan camera’s IP.

Auto Login: After open this function, tester can auto login camera and display camera image. (The login password is the same with last time, the first time using password is the default password "admin")

Video transmission protocol: UTP and TCP protocol.

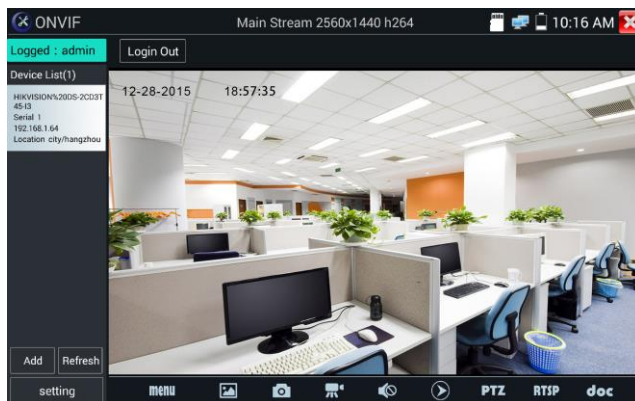
Open password cracker: Cracks password of cameras.

View manual: Open Manual.

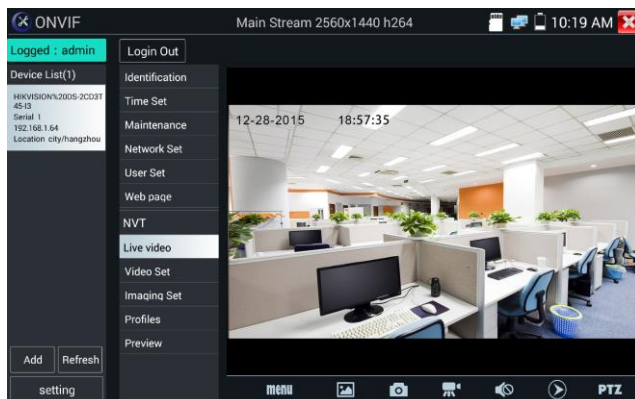
Restore Defaults: Revert “Rapid ONVIF” to default settings.

Confirm: Save the modified parameters.

Click “MENU” icon to open camera setting.



While in the “Live video” menu, click “Video Menu” at the top right of the image to access the following tools: Snapshot, Record, Photo, Playback, PTZ and Settings



ONVIF PTZ control: Tap the image in the direction you want the PTZ camera to move. Tap the left side of the image to move left, right to go right, up to go up and down to go down. Compatible IP PTZ cameras will rotate accordingly. PTZ rotation direction is displayed on top left corner of the image.



IP camera video settings: Click “Video Set” to enter the IP camera’s encoder and resolution settings.
Make the desired changes and click “OK “to save.

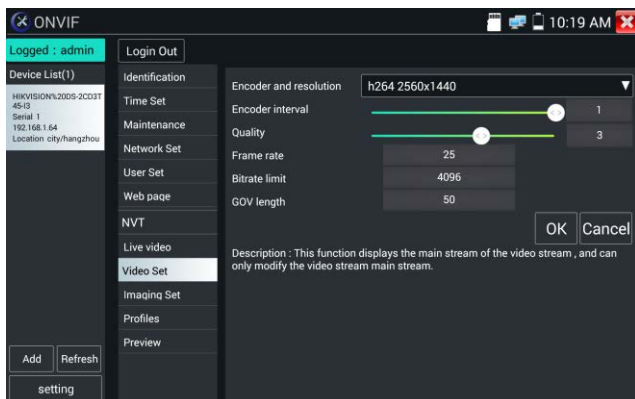
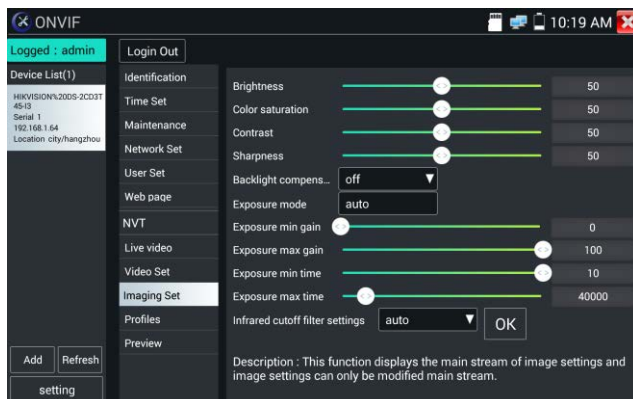
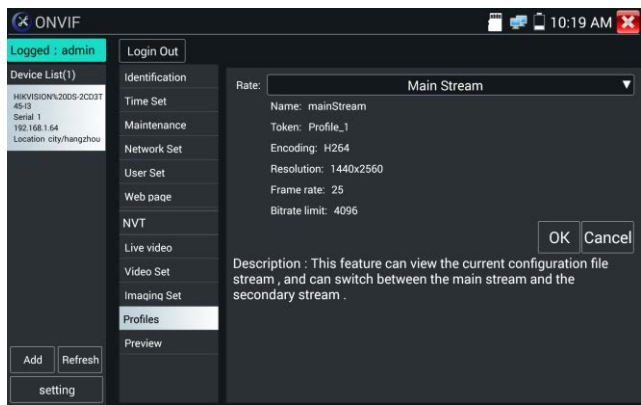


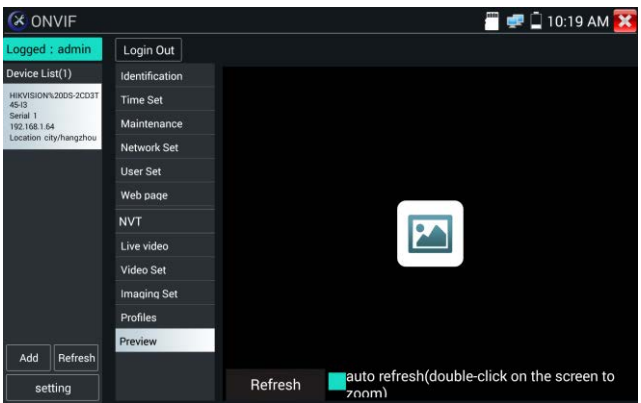
Image setting: Click “Imaging Set” to adjust image brightness, saturation, contrast, sharpness and backlight compensation mode.



Profiles : Click “profiles” , can view video streaming current configuration files, as well as switch between Major stream and minor stream.



Preview pictures : Quickly preview and zoom in or out pictures, automatically and manual refresh.



Identification: click “Identification” to view information of the camera.

ONVIF

10:19 AM

Logged : admin

Login Out

Device List(1)

HIKVISION%20DS-2CD3T45-I3
Serial 1
192.168.1.64
Location city/hangzhou

Add Refresh

setting

Identification

Time Set

Maintenance

Network Set

User Set

Web page

NVT

Live video

Video Set

Imaging Set

Profiles

Preview

Name

Location

Manufacturer

Model

Hardware

Firmware

Device ID

IP address

MAC address

ONVIF version

URI

HIKVISION%20DS-2CD3T45-I3

city/hangzhou

HIKVISION

DS-2CD3T45-I3

88

V5.3.3 build 150624

DS-2CD3T45-I320150803AACH533412942

192.168.1.64

c4:2f:90:73:a8:0e

2.40

http://192.168.1.64/onvif/device_service

OK

Cancel

Time set: click “Time set”, Select “Manual set” to set up the time of camera.

ONVIF

10:19 AM

Logged : admin

Login Out

Device List(1)

HIKVISION%20DS-2CD3T45-I3
Serial 1
192.168.1.64
Location city/hangzhou

Add Refresh

setting

Identification

Time Set

Maintenance

Network Set

User Set

Web page

NVT

Live video

Video Set

Imaging Set

Profiles

Preview

Camera Time 19:0:50 2015/12/28 (Local)

Time zone:

CST-8:00:00

Time Set:

Synchronize with computer time

System Time 10:19:57 2015/12/28 (Local)

OK

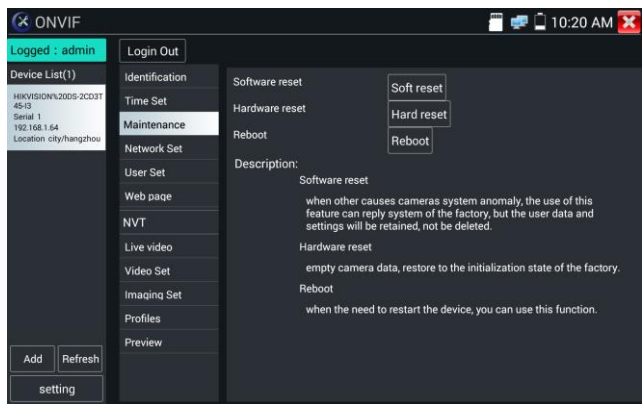
Cancel

time zone and the system time just to camera time changes provide a reference, time zone and the system time can not be changed.

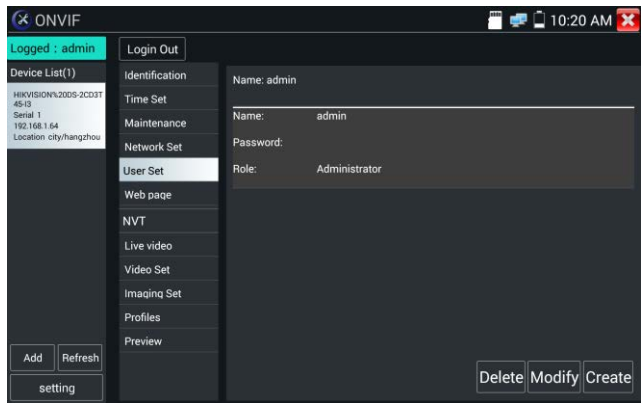
1. reference time zone: selected reference time zones, click the Apply button, you can change the camera time.

2. time reference system: manual settings, a quasi time, click the Apply button, you can change the camera time.

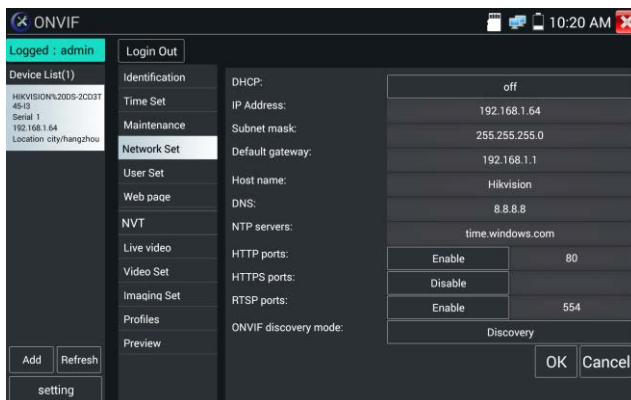
Maintenance: For camera software reset or restore to factory settings.




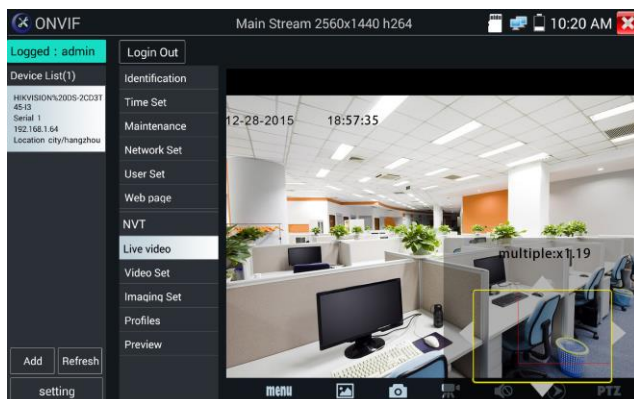
User Set: Modify camera user name, password etc parameters





Network setting : Click “Network Set” to change the IP address. Some cameras cannot support change IP address, so there is no change after saving.



Zoom in image: press the  key to enter the zoom mode. Press it again to exit zoom mode. When the image is enlarged tap left, right, up or down on the image to move the whole image on the screen

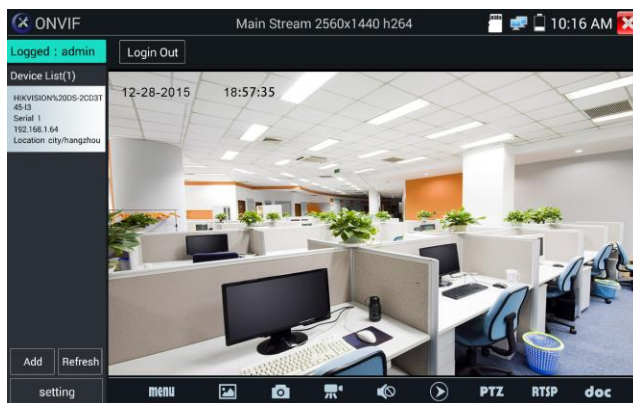


When the image is enlarged, if not operate on touch screen, it can operate by the keyboard ,press the key  to zoom in , press the key  to zoom out ,press upward and downward key to move image.

If it is network video input to the tester, as the tester supports resolution up to 1080p, the input image will be very clear after it is enlarged. This is greatly helpful for the installers to ensure the IP camera's video coverage and decide the IP camera's install site.

Image can only be enlarged on SD mode (The icon "ONVIF" is SD mode.)

Select relative function on the bottom Toolbar to operate, "Snapshot", "Record", "Photos", "Video playback", "Storage set", "PTZ control" etc.



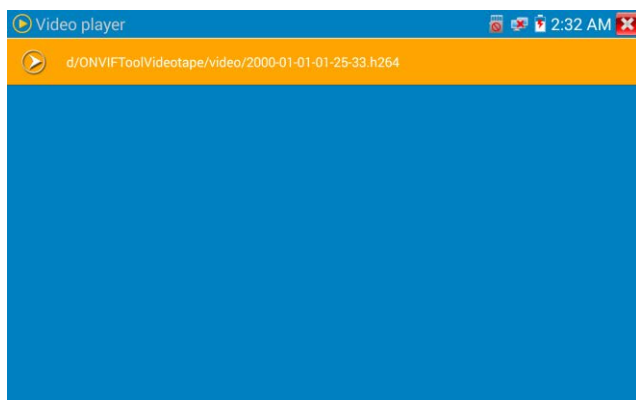
Snapshot: Click bottom "snapshot" to screenshot the image and store it to SD card.

if select manual storage, appears dialog box "Input Name", user-defined the files name (by Chinese character, English letter, or digit) to save in SD card, if select "Auto- storage" , the tester auto stores the files after snapshot.

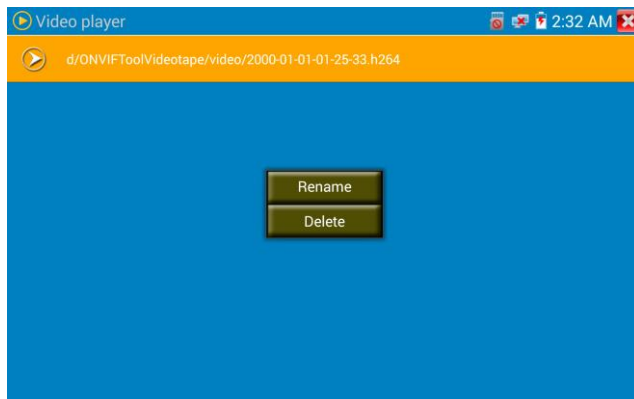
Record: When you click bottom the “Record” icon, video starts recording. A red recording icon appears on the screen and begins to flash and a timer appears indicating the time elapsed for the video. Click on the “Stop” icon to stop recording and save the video file to the SD card.



Playback : Click the “Playback” icon to view saved videos. Double click the video you want to play. Click to return to the last menu.



To rename or delete a photo, click and hold on the file until this screen appears:

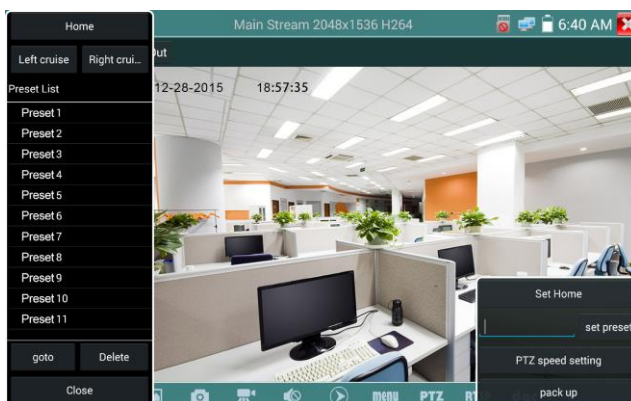


Video files can play in the Video player on the main menu.

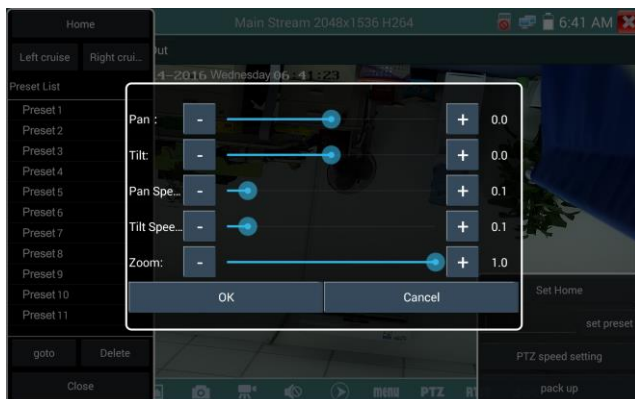
PTZ

Set preset position: Move the camera to preset position, enter the preset number on the Bottom right corner to complete position preset.

Call the preset position: Select the preset number on the left, click "Call" to call preset.

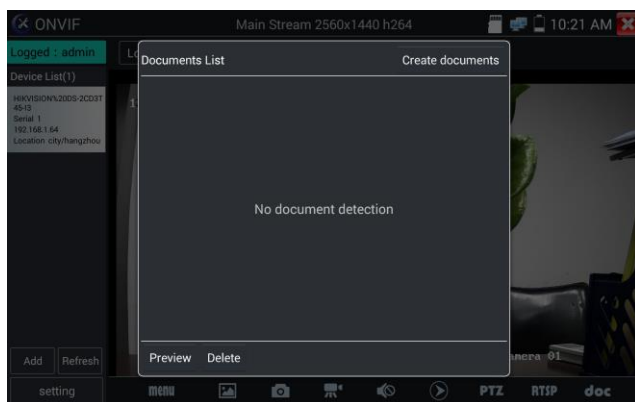


PTZ Speed set: Horizontal and Vertical Speed set.

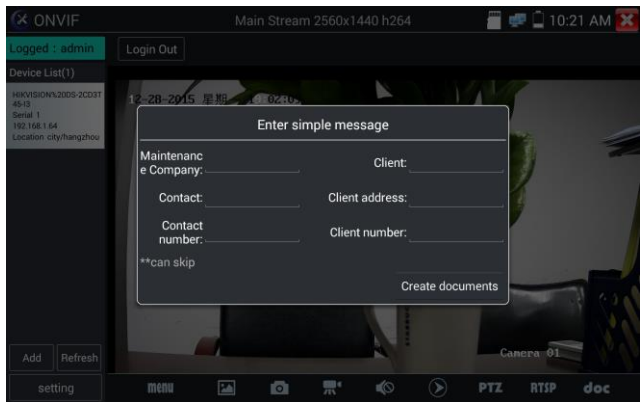


RTSP: Get RTSP address of the current camera

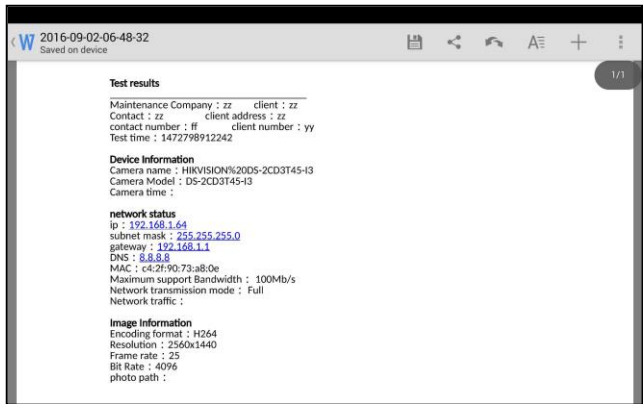
Doc: Auto generate test reports document of camera, click "generate document". Click Preview to view the report document.



Enter the camera test information; click "Generate Document" to complete the report.



Click “Doc” menu again, you can preview the report document.




Icons description: the description of function icons on the bottom toolbar.

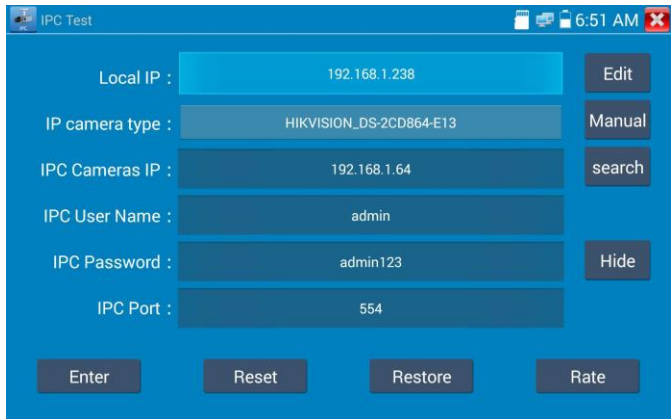
3.3.9 IP camera test

Display image from the 4K H.265 camera by mainstream

Click icon  to enter IP camera test

Note: Currently, the IPC Test App only supports some brands’ specific IP cameras; these include specific models made by ACTI, AXIS, Dahua, Hikvision, Samsung, and many more. If the camera is not fully integrated, please use the ONVIF or RTSP apps.

IPC test interface



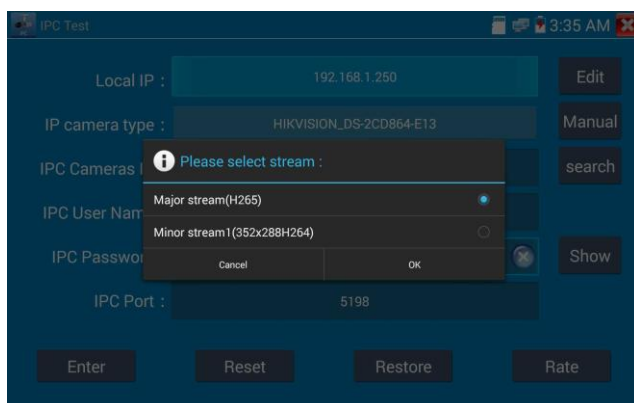
Local IP: This is the tester’s IP address. Click “Edit” to enter “IP setting” and change the tester’s IP address settings.

IP camera type: Click on the IP Camera type to select the Manufacturer and model number of the integrated IP camera.

“Manual”: Click IP camera type, list Honeywell, Kodak, Tiandy, Aipu-waton, ACTi, WoshiDA IP camera etc. If the brand has offered official original protocols, please select camera type, input IP camera address ,user name and password ,click” official” to enter the camera image display interface(Currently, only support DAHUA official protocols)



Stream code: When test camera via RTSP, you can select mainstream or sub stream to test (if camera's RTSP have not been start or without, it will tip "auto match fail, please witch to manually selecting



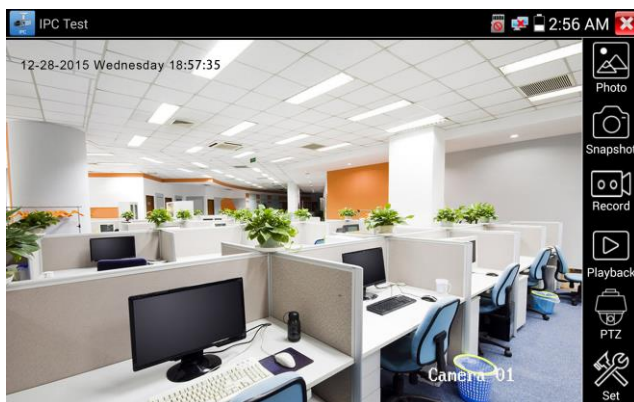
IP Camera's IP: Enter the IP camera's IP address manually or click "Search" to auto-scan for the IP camera's IP address. It is better to directly connect the IP camera to the tester so the search results will only display the camera's IP address. If the tester is connected to a PoE switch, it will find and display several IP address.

IPC User Name: Enter IP camera's user name.


IPC Password: Enter IP camera's login password.

IPC Port: When you select the IP camera type, it will default the camera's port number and doesn't need to be changed.

After all settings are completed, click "Enter" to view the live video.




If IP address setting has error or IP camera is not connected. The tester prompts "Network Error"

Click  to quit from image display and return to IP camera test interface.



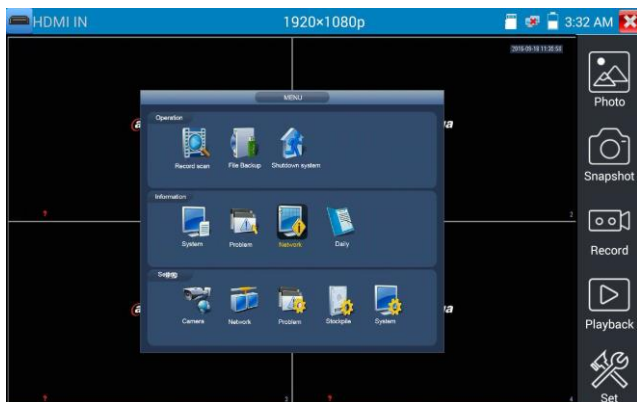
Once you are viewing video on the IPC Test app, you will see the "Video Menu" icon on the top right. This button will give you access to Snapshot, Record, Photo, Playback, PTZ, and Set. Please refer to the ONVIF section to use these functions.

3.3.10 HDMI IN

HDMI in HD signal test, Tap icon " "to enter

When tester receives HDMI in image, the top tool bar shows the resolution of this image. You can select "resolution" to set resolution in the setting menu .Tap screen by twice, full image display. Support resolution below

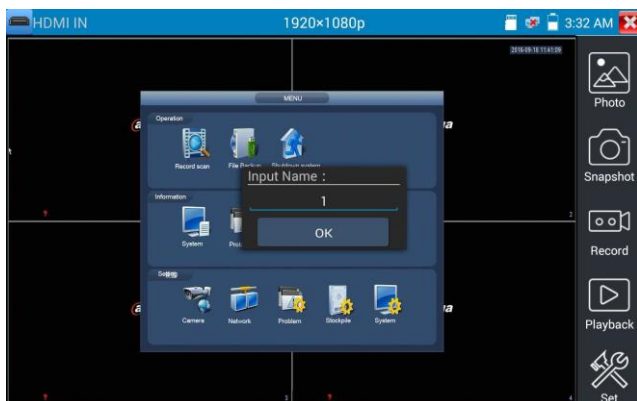
720×480p /720×576p /1280×720p /1920×1080p /1024×768p/1280×1024p /1280×900p /1440×900p



(1) Snapshot

Click the icon “Snapshot”, when the video in, to take a picture and save the current video frame in the SD card as JPEG file.

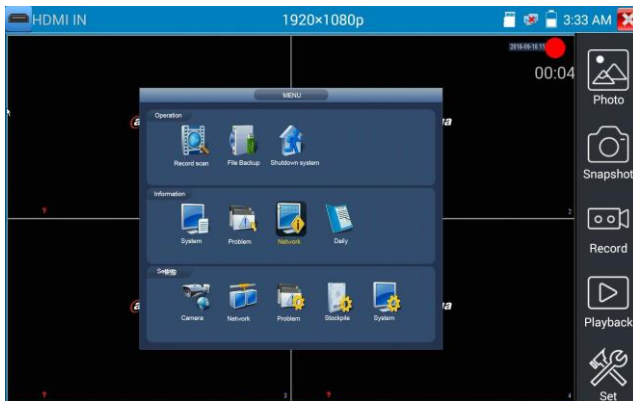
If the unit is set to the manual mode an “Input Name” pop up box will appear and you can enter a title for the snapshot. If the unit is set up to automatically set file names, this box will not pop up.



(2) Video record

When you click the “Record” icon, video starts recording. A red recording icon appears on the screen and begins to flash and a timer appears indicating the time elapsed for the video. Click on the “Record” icon again to stop recording and save the video file to the SD card.

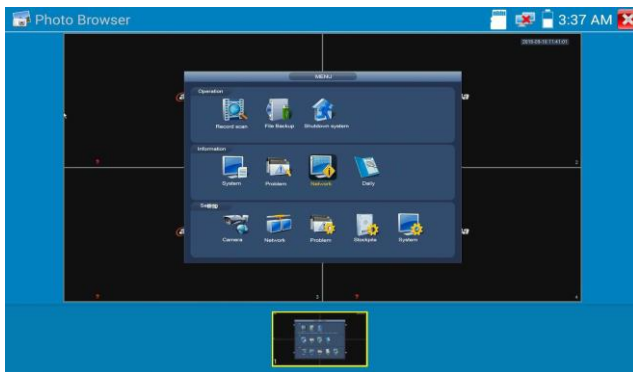
If select manual storage, before recording begins, appears dialog box “Input Name”, user-defined the files name (by Chinese character, English letter, or digit) to store in SD card, tester will hereby store the files in SD card after recording. If select “Auto-storage, tester will auto store the files in SD card after recording.



(3)Photo


Click the icon “photo” to enter, click the selected thumbnail photo to display it on the screen.

Double-tap the image you want to view to make it full screen. Double-click again the photo to return.



To rename or delete an image, click and hold on the file until this screen below appears



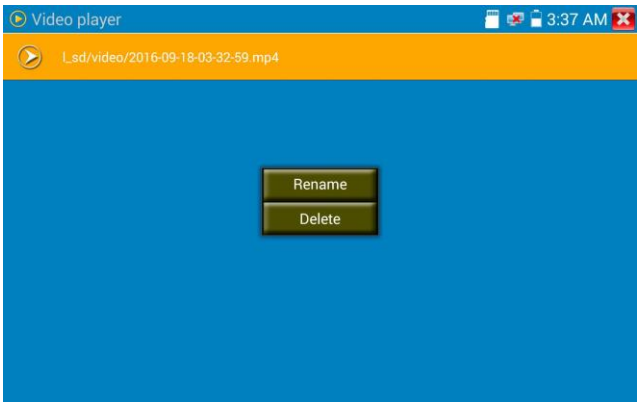
Click  to close and return to PTZ controller.

(4) Recorded video playback

Click the “Playback” icon to view your recorded videos. Tap on the video file image you want to watch.



To rename or delete a video, click and hold on the file until this screen appears:



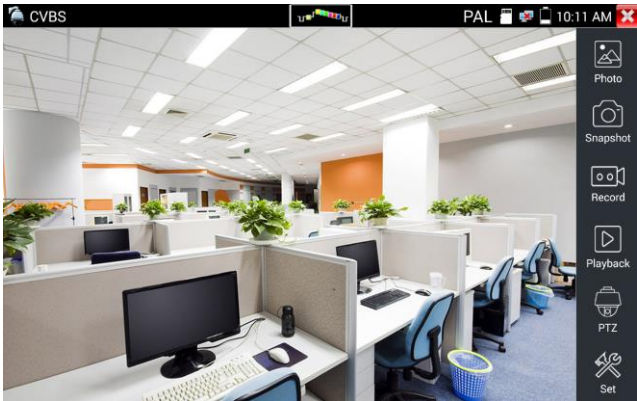
Video files also can play in the main menu “Video Player”.


3.3.11 Video monitor test

Analog camera test and PTZ control, click icon





to enter



Display the input video image; click the top menu bar icon  to enter video level meter, (PEAK level, SYNC level, COLOR BURST measurement)

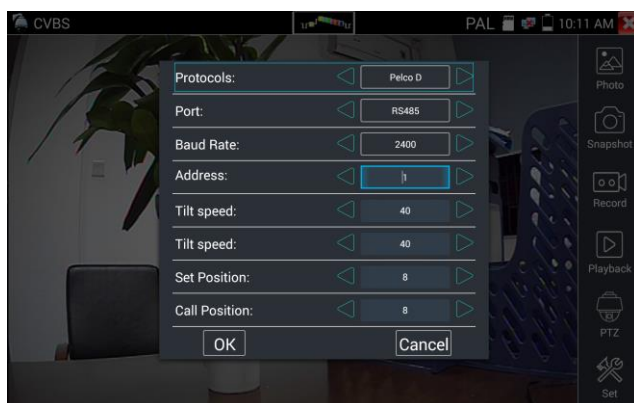
Select relative function on the right side Toolbar to operate , functions including “Photos”, “Snapshot”, “Record”, “Playback”, “PTZ”, “Set”,

Click  , or press  to quit.

Click the screen twice quickly, can be full zoom in on the touch screen.

(1) PTZ controller parameter setting

Select and click icon “PTZ”, to enter PTZ setting:



A. Protocol

Use the up and down arrow keys to move the yellow cursor to the “protocol”, set corresponding Protocol and support more than thirty PTZ protocols. Such as Pelco-D, Samsung, Yaan, LiLin, CSR600, Panasonic, Sony-EVI etc.

B. Port

Click and move, to “port” Select the communication port for the PTZ camera controlling (RS485)

C. Baud

Move the yellow cursor to “Baud”; Select the baud rate according to baud rate of the PTZ camera.
(150/300/600/1200/2400/4800/9600/19200/57600/115200)

D. Address

Set the ID according the ID of PTZ camera (0~254), the setting address data must be consistent the

speed dome address.

E. Pan speed: Set the pan speed of PTZ camera (0~63)

F. Tilt speed: Set the tilt speed of PTZ camera (0~63)

G. Set preset position (Set PS)

Click and select “Set PS”, set and save preset position number (1~128),

H. Call the preset position (Go PS)

Click and select “Set PS”, set and save preset position number (1~128), click “sure” to save,

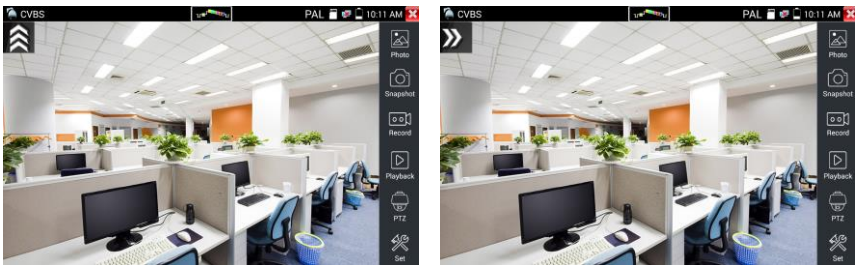
Call some special preset number, can call the dome camera menu



Check and set the protocols, address, interface and baud, all must be consistent with the dome camera, then the IPC tester can test .After setting the parameter, the tester can control the PTZ and lens


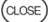
To control PTZ by screen touch:

Tap left, right, upward and downward on the touch screen to control the PTZ rotation direction. By two fingers move outward and inward on the touch screen to zoom in and out the PTZ.



PTZ Control:

Press the key     control the PTZ direction of rotation

Press the key  or  , to switch on or turn off the aperture.

Press the key  or  , adjust the focus manually

Press the key  or  , manually adjust the zoom


(2) Video and storage setting

Click icon “set”, to enter and set analog video image brightness, contrast, color saturation, as well as the file storage way after snapshot and recording, support auto-storage and manual storage.

When select manual storage, user can name and store the files.



(3) 4 x zoom image display and Video out

When image input, press  to enter “zoom”, press it again to quit.

Using the touch screen to control PTZ camera movement:

Tap left, right, upward or downward on the video image to move the PTZ camera in a desired direction.

Stretch two fingers outward or inward on the touch screen to zoom the image in or out.



If not use touch screen to operate, press the key **TELE+** to zoom out, press the key **WIDE-** to zoom in, press upward and downward key to move the image

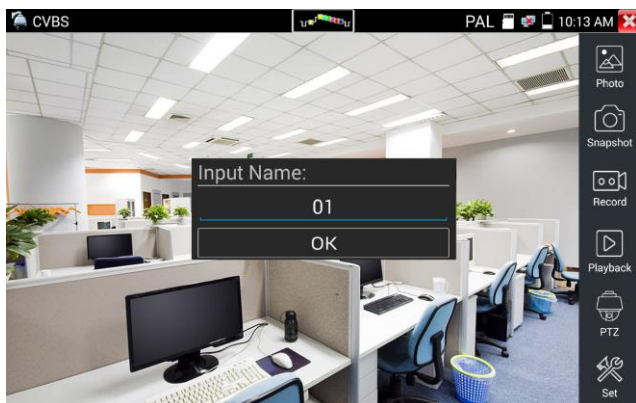


For analog video input, as the resolution is 720*480, it is normal that the zoom in image is not clear. But for network digital video input, as it supports resolution up to 1280*960, the zoom in image is still very clear. This is very helpful for IP camera installation.

(4) Snapshot

Click the icon “Snapshot”, when the video in, to take a picture and save the current video frame in the SD card as JPEG file.

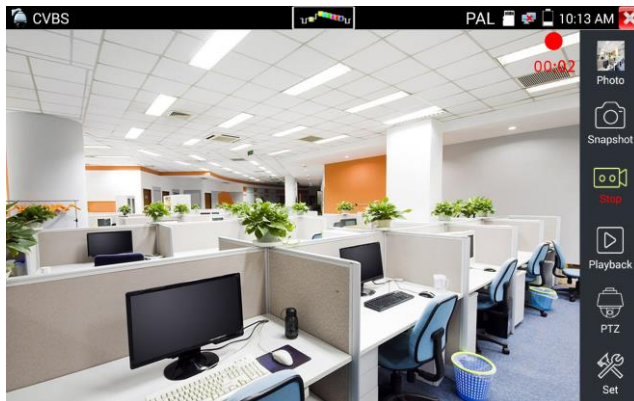
If the unit is set to the manual mode an “Input Name” pop up box will appear and you can enter a title for the snapshot. If the unit is set up to automatically set file names, this box will not pop up.



(5) Video record

When you click the “Record” icon, video starts recording. A red recording icon appears on the screen and begins to flash and a timer appears indicating the time elapsed for the video. Click on the “Record” icon again to stop recording and save the video file to the SD card.

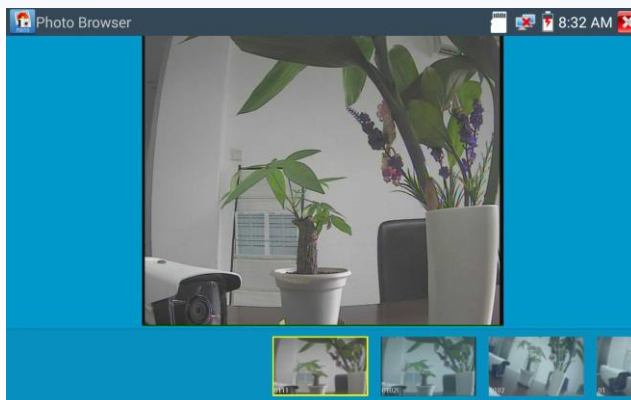
If select manual storage, before recording begins, appears dialog box “Input Name”, user-defined the files name (by Chinese character, English letter, or digit) to store in SD card, tester will hereby store the files in SD card after recording. If select “Auto-storage, tester will auto store the files in SD card after recording.



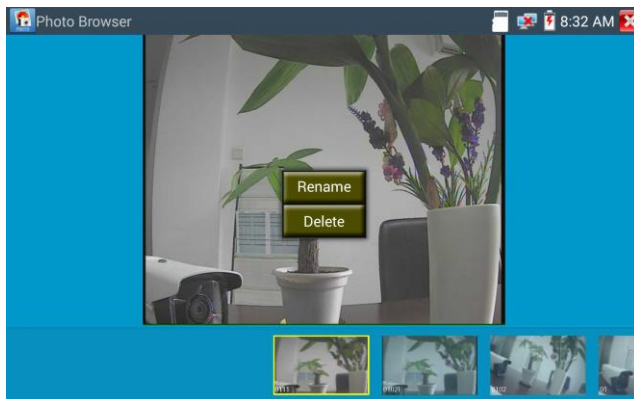
(6)Photo


Click the icon “photo” to enter, click the selected thumbnail photo to display it on the screen.

Double-tap the image you want to view to make it full screen. Double-click again the photo to return.



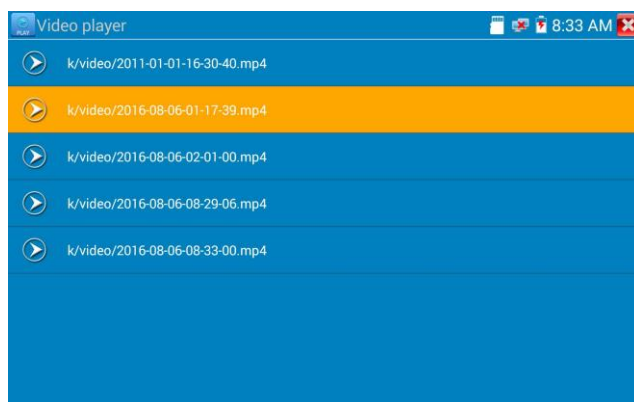
To rename or delete an image, click and hold on the file until this screen below appears.



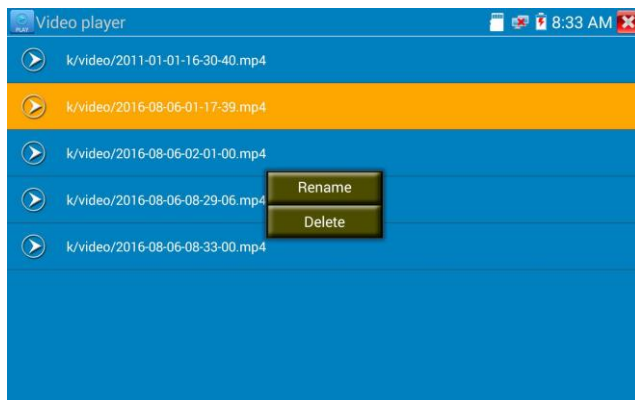
Click  to close and return to PTZ controller.

(7) Recorded video playback

Click the “Playback” icon to view your recorded videos. Tap on the video file image you want to watch.




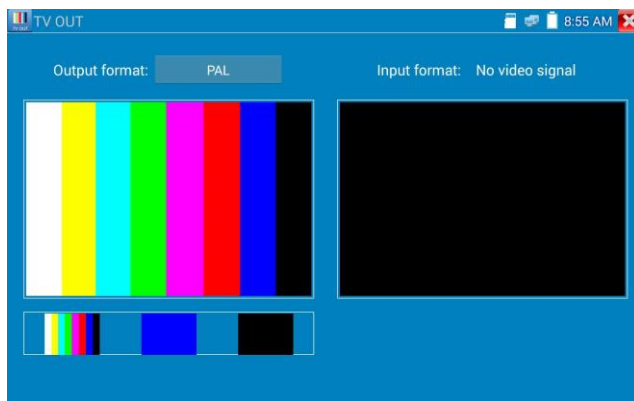
To rename or delete a video, click and hold on the file until this screen appears:




Video files also can play in the main menu “Video Player”.

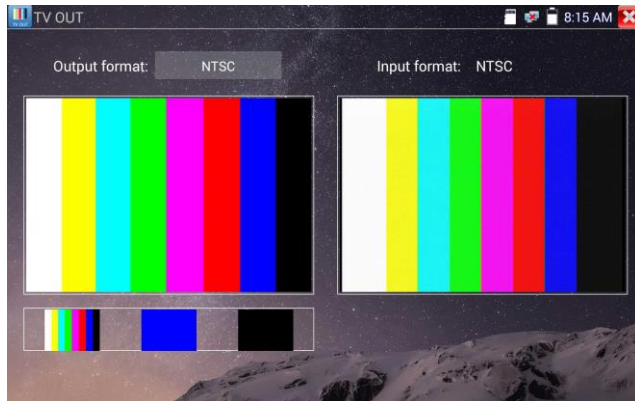
3.3.12 Color-bar generator (TV OUT)

Click  to enter, the tester sends the color bars from the “Video out” port, Click the icon “PAL”, select “PAL/NTSC” output formats



Click the selected color-bars, testing image or single bar (red, green, blue, white or black). Double click to full display on the screen and output, click  to return main menu.

Application




BNC loop test: Tester can send and receive color bar generator through the tester's "video out and video in" port, it is for testing transmission channels, such as video Optical, video cables etc. The tester "VIDEO OUT" port to connect optical terminal's sending port, and "VIDEO IN" Port to optical terminal's connect its receiving port.

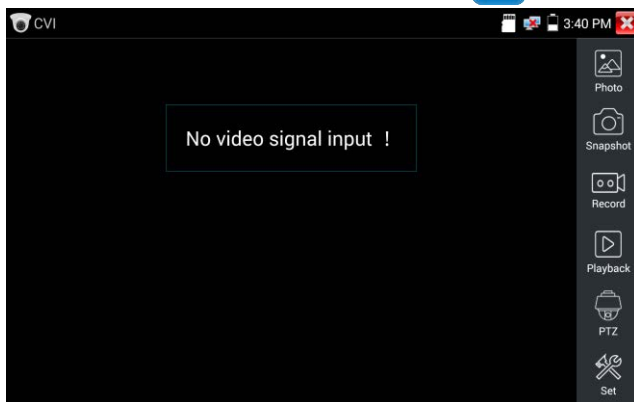
A. When maintaining the dome camera, the tester sends out the color bar by its BNC output to the monitor at the monitoring center. If the monitor receive the color bar, it means the video transmit channel works normally. Meanwhile on the basis of the received color bar, the monitoring center can judge if transmission has loss or interference.

B. The tester sends out the pure color bar (such as white and black color), to test the monitor whether has bright or black dots

C. The tester sends out video signal image to test if the image received by the monitor has excursion.

3.3.13 CVI camera test

HD CVI camera, CVI dome camera test and PTZ control, click icon  to enter

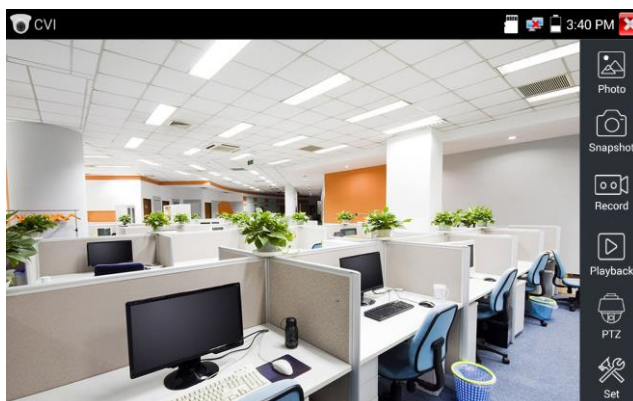


When HD CVI signal input, the tester will display the image resolution on the top bar. Double-taps on the screen to make the image displayed full screen.

The tester supports resolution as follows

1280x720P 25FPS / 1280x720P 30FPS / 1280x720P 50FPS / 1280x720P 60FPS

1920x1080P 25FPS / 1920x1080P 30FPS

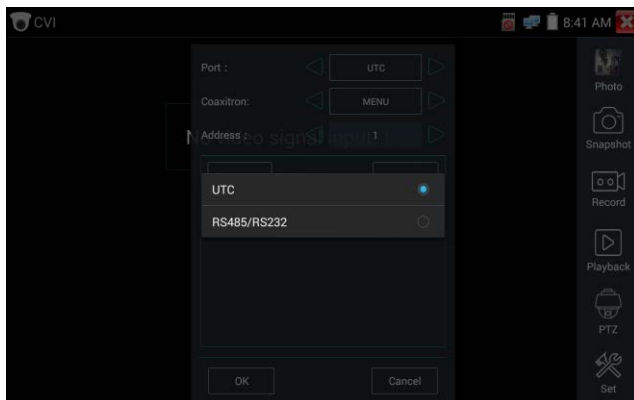


(1) PTZ control

1.1 Coaxial PTZ control

Click the icon“PTZ”on the right toolbar to do the corresponding setting.

“Port”: select coaxial control



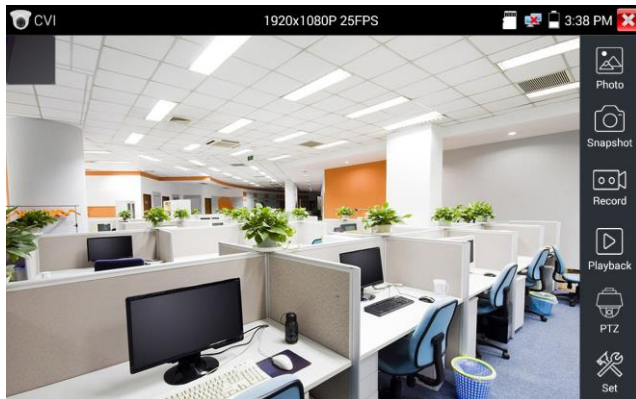
Enter PTZ address to perform parameters setting



Operation instructions, please refer to “3.3.1 PTZ (1) Video monitor test”













The PTZ address in the tester must be consistent with the dome camera or decoder, then the IPC tester can test .After setting the parameter, the tester can control the PTZ and lens.



To control PTZ by screen touch:

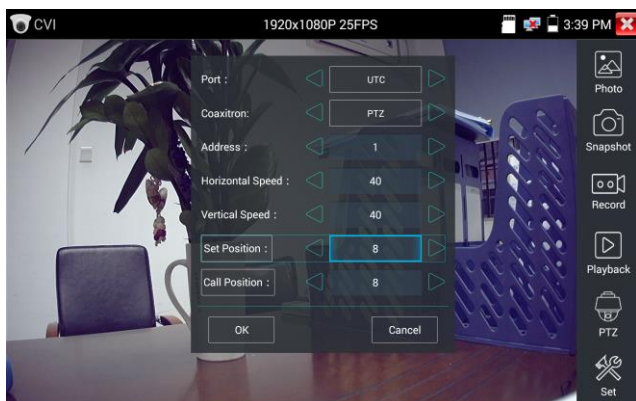
Tap left, right, upward and downward on the touch screen to control the PTZ rotation direction, PTZ cameras will rotate accordingly. By two fingers move outward and inward on the touch screen to zoom in and out the PTZ.

To control PTZ by key buttons

- ◆ Press arrow keys to control     to control the PTZ direction of rotation
- ◆ Press the key   to switch on or turn off the aperture.
- ◆ Press the key   , adjust the focus manually
- ◆ Press the key   , manually adjust the zoom

Set preset position

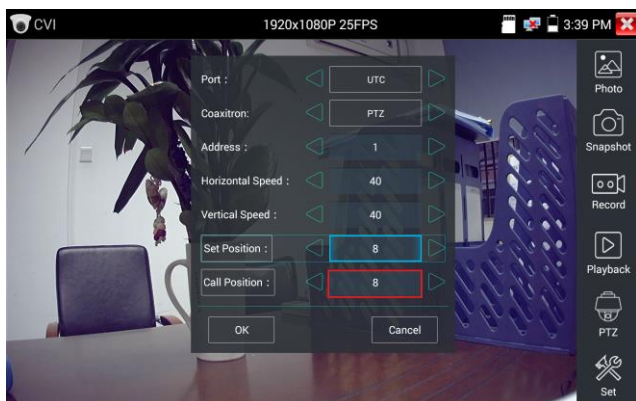
Setup preset position, move the PTZ camera to the desired position, then Tap it and input preset position number. Tap “Set position” to complete set preset position



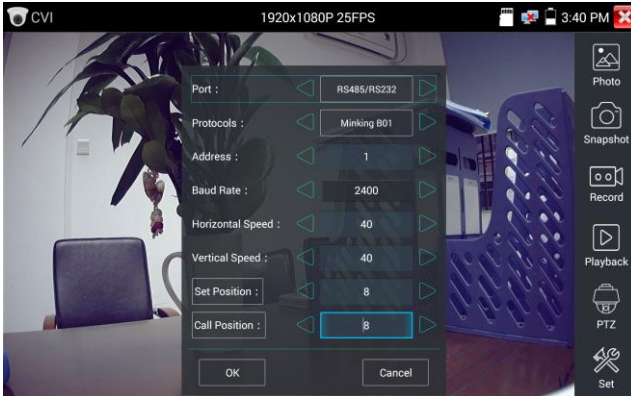
Call preset position

Tap the preset position:

Tap the preset position area, input preset position number. Tap “call position” to complete call preset position.



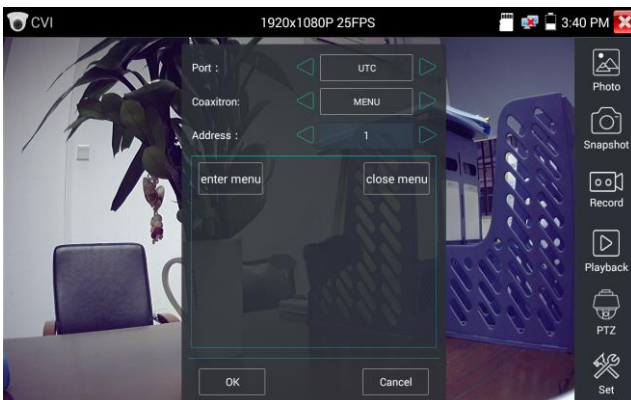
1.2 RS485 control



Operation instructions, please refer to “3.3.1 PTZ (1) PTZ control parameters setting”

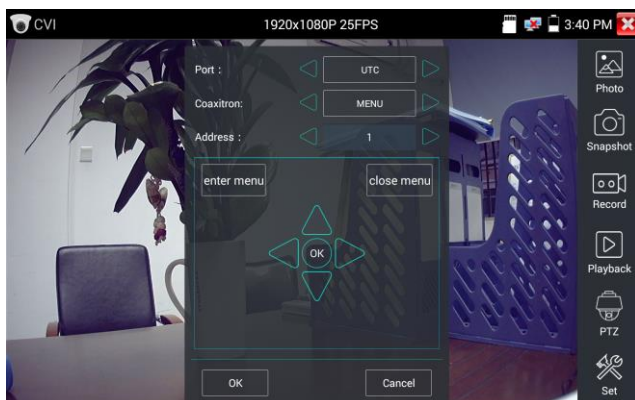
(2) Coaxial camera menu setting

Tap icon “UTC””, select “menu setting” to enter the dome camera menu.

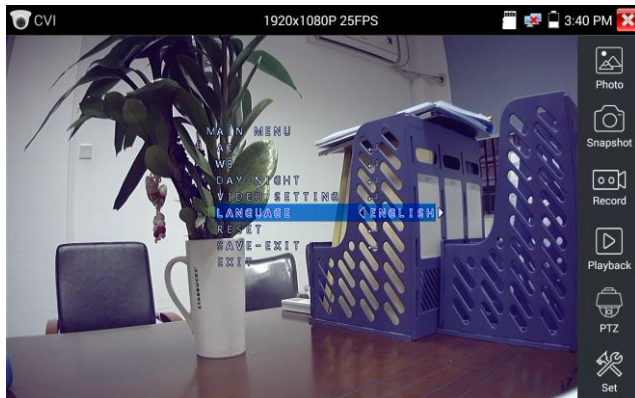


Input calling dome camera menu address code, after finishing the parameter settings, you can press the

key  or click the icon  to call the dome camera menu.

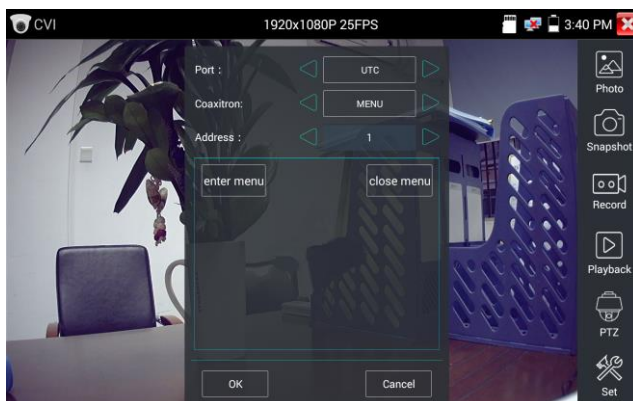


Press arrow keys     to set



(3) Snapshot, record, photo viewer and video play back, please refer to “3.3.1 PTZ (1) Video monitor test”

Tap “close menu” or press the key “**ENTER**” to close camera menu.

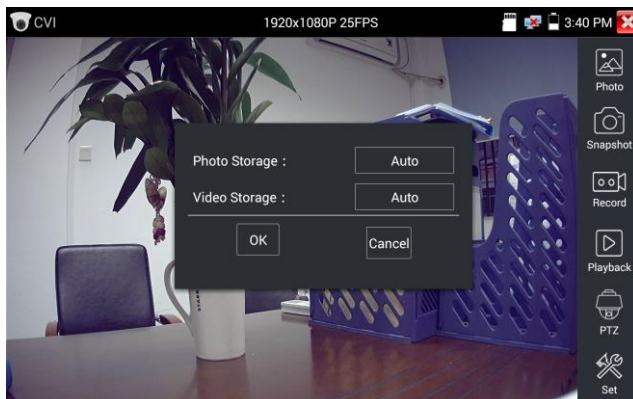


(4) Save setting


Click icon “Set” on the right toolbar to enter storage setting.

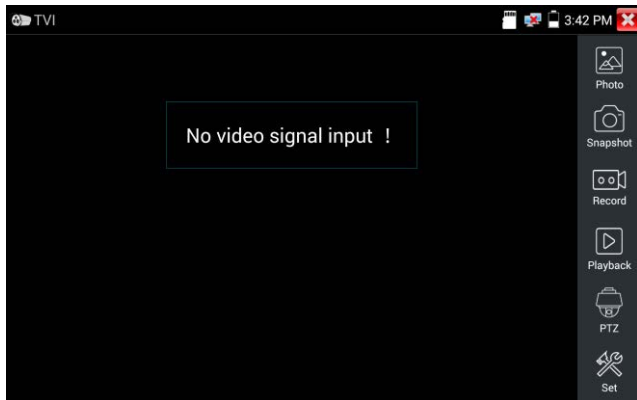
Support auto-storage and manual storage.

When select manual storage, user can name and store the files.



3.3.14 TVI camera test

HD TVI camera, TVI dome camera test and PTZ control, Click icon  to enter

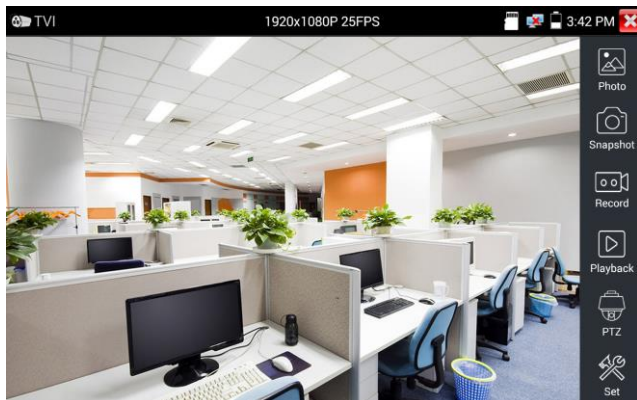


When HD TVI signal input, the tester will display the image resolution on the top bar. Double-taps on the screen to make the image displayed full screen.

The tester supports resolution as follows:

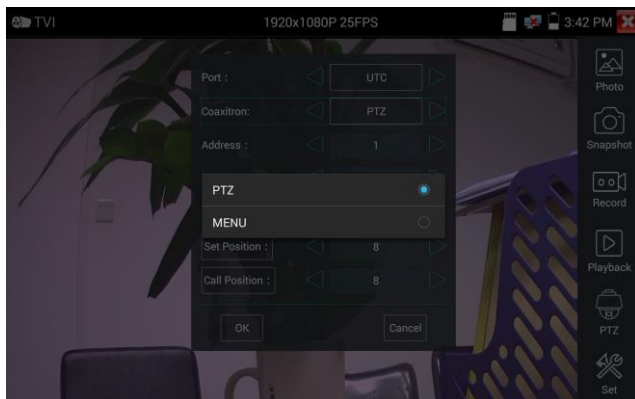
1280x720P 25FPS / 1280x720P30FPS / 1280x720P 50FPS / 1280x720P 60FPS



1920x1080P 25FPS / 1920x1080P 30FPS / 1920x1080P 50FPS / 1920x1080P 60FPS /2048x1536 18 FPS.

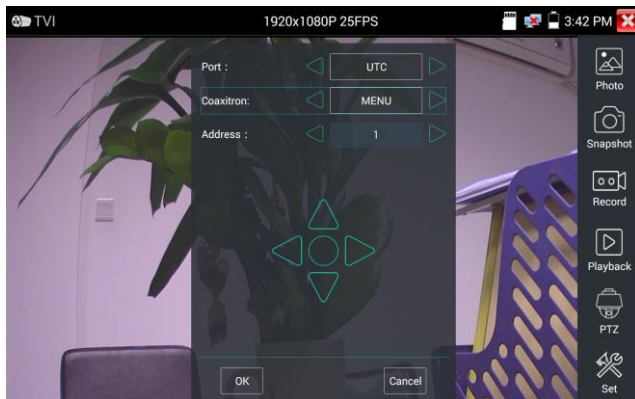


Coaxial camera menu settings

Tap icon “UTC”, select “menu setting” to enter the dome camera menu.



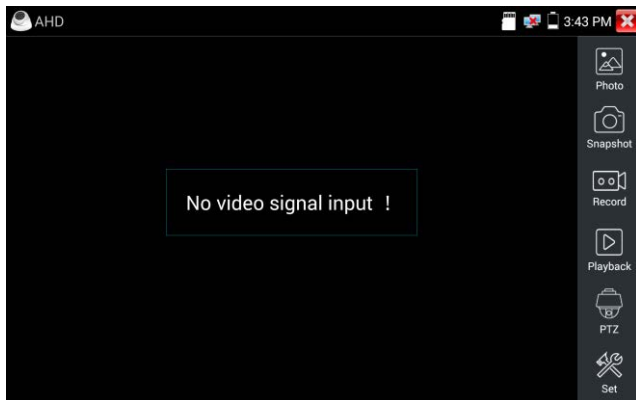
Input calling dome camera menu address code, after finishing the parameter settings, you can press the key  or click the icon  to call the dome camera menu.



More operation instructions (such as PTZ control, coaxial camera menu setting, snapshot, recording and playback etc), please refer to “3.3.6 CVI camera test”.

3.3.15 AHD camera test

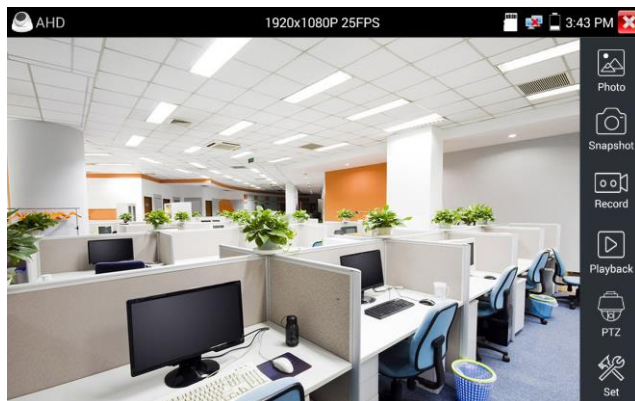
AHD camera, AHD dome camera test and PTZ control, Click icon  to enter



When AHD signal input, the tester will display the image resolution on the top bar. Double-taps on the screen to make the image displayed full screen.

The tester supports resolution as follows:

1280x720P 25FPS / 1280x720P 30FPS / 1920x1080P 25FPS / 1920x1080P 30FPS



(1) Coaxial PTZ control

UTC control: select “PTZ control or PTZ-2” (AHD camera has two different controls, if select “PTZ” and cannot control, please go to “PTZ-2”)



If to coaxial PTZ control the AHD camera, no parameters setting is needed.

More operation instructions please refer to “3.3.6 CVI camera test”

3.3.16 Network tool


(1) IP address scan

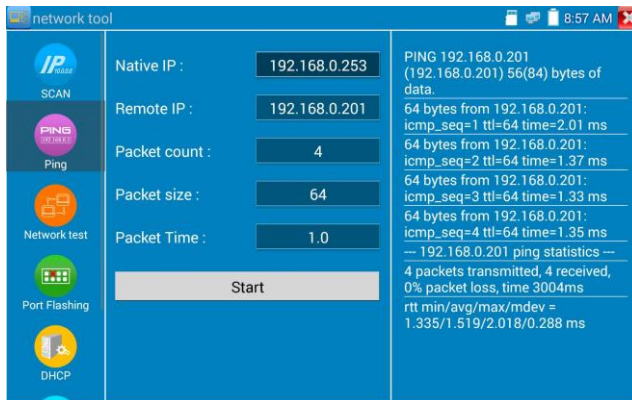
Connect the cable to the LAN port, click icon  to enter, Set your IP address search range by changing the Start and End IP addresses. Click the “Start” button to scan the IP address range. You can also input an IP address in the Port Number Scan to scan for open ports.



(2) PING Test

PING is the most conventional network debugging tool; it is used for testing if the connected IP camera or other network equipment's Ethernet port is working normally and the IP address is correct

Connect a network cable to the LAN port and click the  icon to open the PING tool. You can set your LOCAL (native) IP address, Remote IP address (e.g. IP camera), Packet count, Packet Size, Packet time and Timeout. Press "Start" to start ping. If the IP camera or network device is not configured properly or not plugged in, it will say "Destination host unreachable," or have 100% packet loss. If the tester connects to the device, the send and receive packets will have a 0% packet loss.




Application: PING testing is the most conventional network debugging tools. It is used for testing if the connected IP camera or other network equipment's Ethernet port is working normally and the IP address is correct.

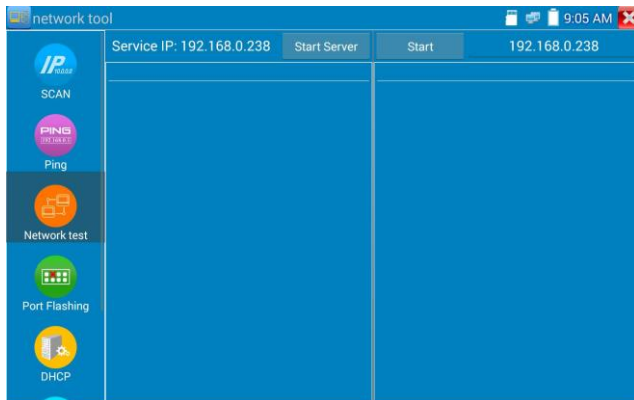
It's normal that the first data packet will be lost when test start.

(3) Network test (Ethernet bandwidth test)

Network test (Ethernet bandwidth test)

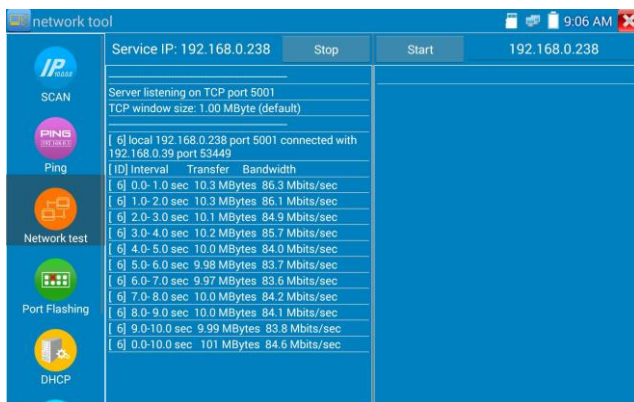
To use the Network tester, you will need two IP testers. One is used as a Server and the other as a Client.

Both devices must be on the same network segment in order to communicate. Click the  icon to open the Network Tester app.

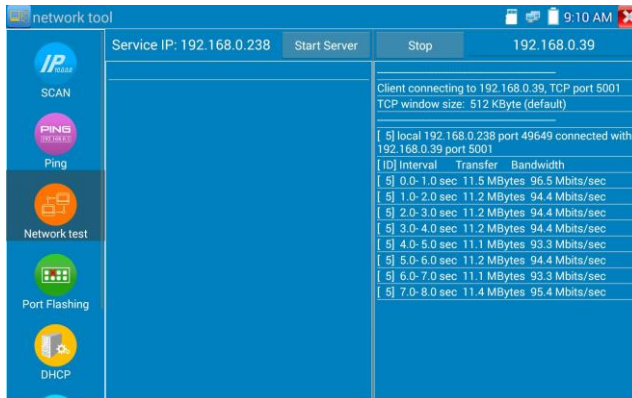


When test, need a tester or a computer installed Network Test Software as the Server, the other tester sends packet test. The two testers must be in the same network segment.

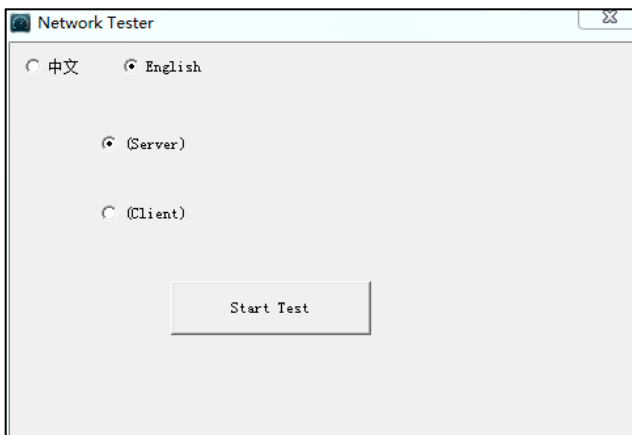
- a) **Start the server:** Click “Start Server” button to use the tester as a Server. It will display its IP address at the top of the screen.



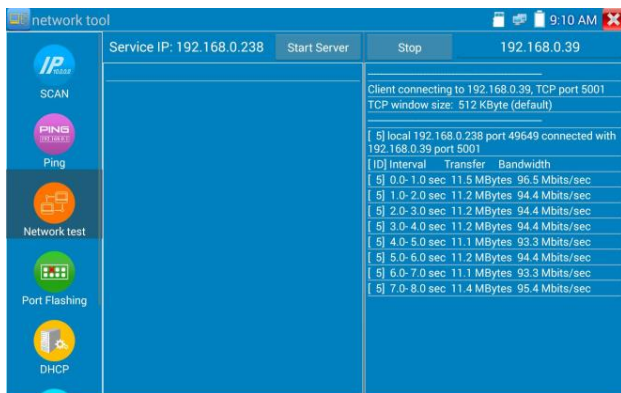
- b) **Start send packet test:** Using the other IP tester, type in the Server's IP address at the top right corner of the screen. This app is used to send packets for network speed testing. Click the “Start” button to send the packets and start testing.



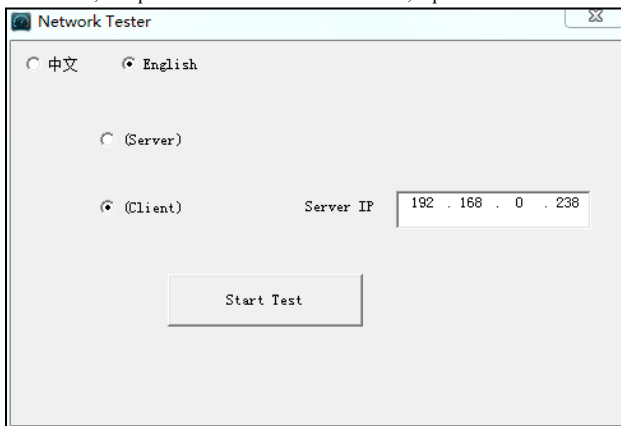
Network bandwidth testing can also be tested with a computer using compatible network bandwidth testing software. Install network bandwidth testing software on a computer, as a test Client or Server, to do the mutual testing with the tester. If use computer as the server, the computer IP address is: 192.168.0.39



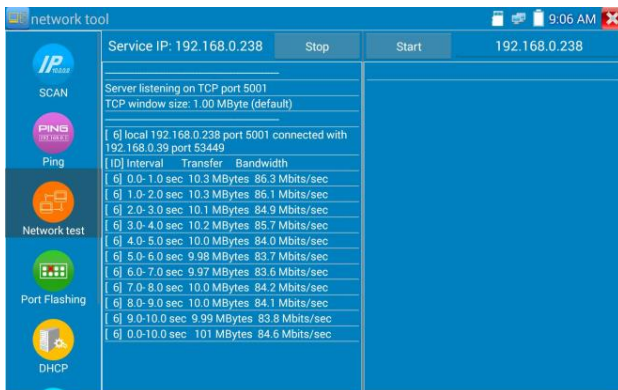
Tester as Client, tester's IP address is: 192.168.0.238. The Server and the Client are at the same network segment, but with different IP address. Input Server's IP address 192.168.0.39 in the tester and click "Start" to test network bandwidth.




Or use tester as a Server, computer as test Client (select Client, input tester's IP address to test)



When use tester as Server, shows results:

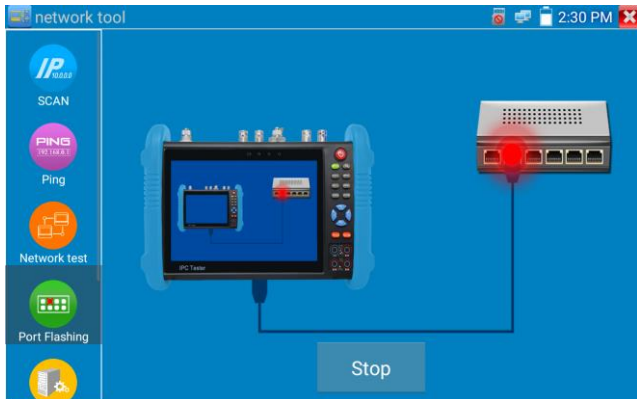


(4) Port Flashing

Connect a network cable to the meter's "LAN" port; click the icon  to open the Port Flashing app. Click "Start". The IP tester sends a unique signal to make the connected LAN port of the switch flash.



If the tester and PoE switch are connected well, the LAN port of POE switch flash at special frequency, if not, no any changes on the LAN port



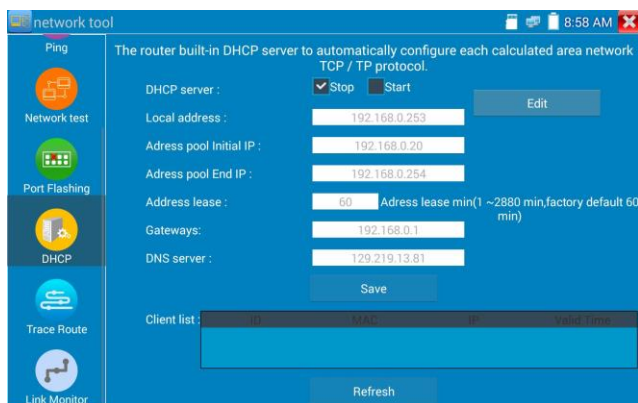
Application:

The tester will send special signals to make the connected LAN port flicker at special frequency, which will enable the installers to easily and quickly find the connected Ethernet cable. This function can

prevent mistakenly insertion or disconnection non-corresponding cable to artificially interrupt network connection.

(5) DHCP server

Click on the DHCP icon to open the DHCP server app. Select the “Start” check box at the top and make any desired changes to the network settings. Click “Save” to start assigning dynamic IP addresses for IP cameras and other networked devices. Click the “Refresh” button to check your Client list.



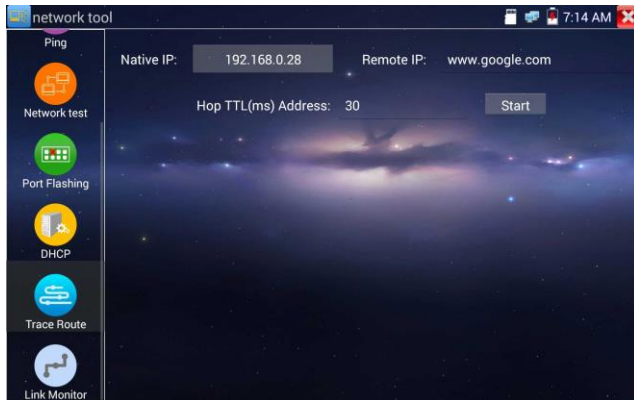
(6) Trace route

It is used to determine path of the IP packet access target.

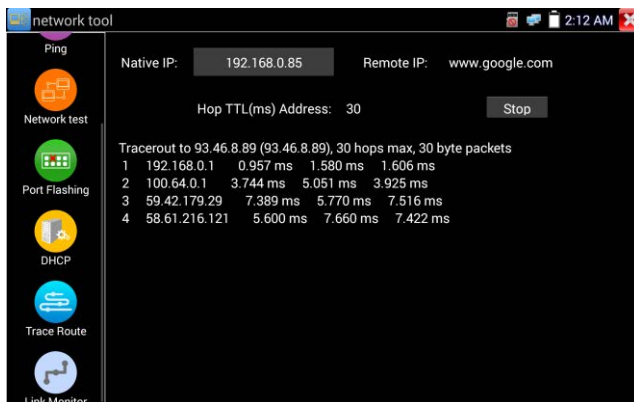
Note: Trace route testing results only for reference, for accurate test route tracking, Please use professional Ethernet tester.

Click  to enter trace route


Input tracking IP address or domain name in the Remote Host IP. Set maximum hop count, normally default is 30

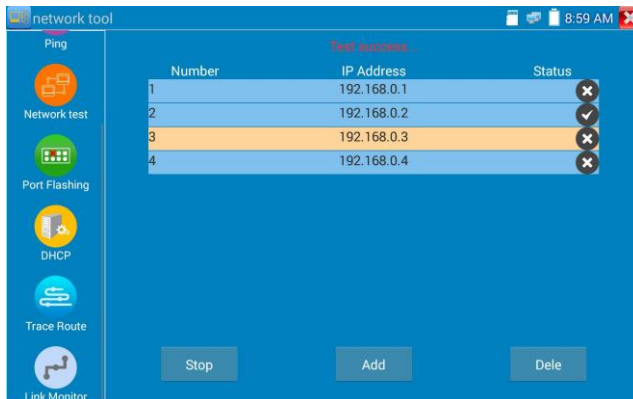


Click “start” to trace the goal address



(7) Link monitor


Click the  icon to open the Link Monitor app. This app is used to see if an IP address is occupied by other network devices. This will avoid new address conflicts. Click “Add” and enter the desired IP address. To test different network segments, click the “Settings” icon on the main menu and go to IP Settings and make the desired changes. Once the desired IP addresses are added to the Link Monitor list, click “Start”. If the IP address status shows a check mark the IP address is occupied. If the IP address status shows an X the IP address is available. Click “Stop” to stop the testing



Application:

Add an IP camera or other network device to the current network group, the new IP address must not be occupied, otherwise it will cause IP conflicts and stop the equipment normal working. Link monitor can check if the new setting IP address is occupied.

3.3.17 Rapid IP Discovery

Connect the cable to tester's LAN port. Press  to enter Rapid IP Discovery app.


Click "Start" to search all IP address of connected equipments in whole network segment.

Click "Stop" to stop work.



3.3.18 PoE power / DC12V 2A and DC 5V 2A USB power output

When the tester is turned on, the 12VDC and 5VDC power output functions are automatically turned on. If the IP tester is turned off, the 5VDC USB can still be used to power an external USB device.

To use the PoE Power Output function, click on the icon  and change the switch “ON” or “OFF”. The IP camera needs to be connected to the LAN port before you turn PoE Power on. If the IP camera Supports PoE, the PoE power is delivered via pins 1, 2, 3, and 6 on the LAN port. The IP tester will display “48V ON” at the top of the screen when the POE power is still on.

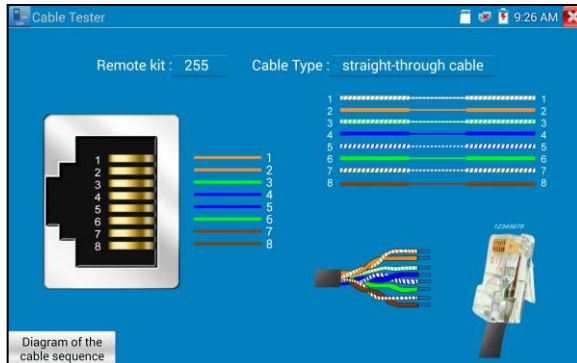


Note:

1. Don't input power into the “DC12/2A OUTPUT” port.
2. Don't output this DC12V/2A power to the DC12V/IN port of the IP camera tester to avoid destroy
3. The IPC tester power output is close to 2A, if the IP camera's power is over 2V, the tester will auto enter protection mode. Disconnect all the connections of the tester and then connect the tester with power adaptor to resume the tester.
4. Before turning on the PoE power output, please make sure the IP camera supports PoE power. Otherwise it may damage the IP camera.
5. Make sure you plug in your IP camera to the LAN port prior to turning on PoE power
6. Make sure the tester is full charged or more than 80% charged, otherwise the tester will shows “low power”, “not able to supply power”.

3.3.19 Cable Test

Click icon  to enter



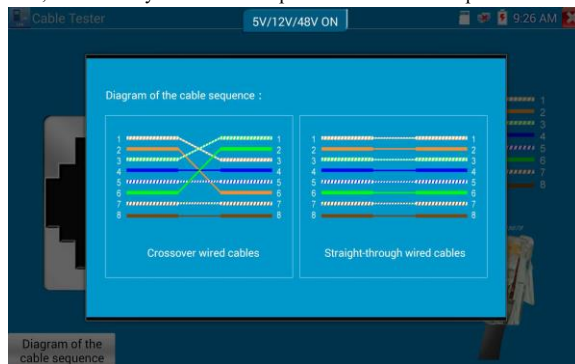
Test LAN cable or telephone cable.

Connect LAN cable or telephone cable with the CCTV tester and cable tester. And then the connecting status, cable type and the sequence of wires as well as the serial number of the cable tester kit will be displayed.

The number of the cable tester is 255.

Cable test

Tap "cable test sketch map", pop up Straight-through cable and crossover cable sketch, It is for line sequence reference, when the crystal on the first pressure in the twisted-pair



3.3.20 RJ45 cable TDR test

Connect cable to tester's LAN port, click icon “” to enter RJ45 cable TDR test app.



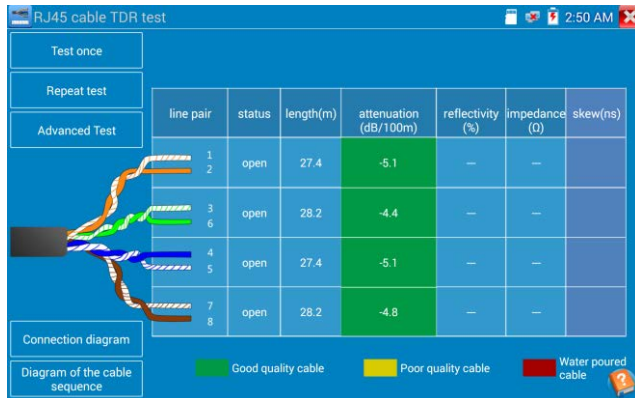
Single test: test cable status, length and attenuation.

Repeat test: continue to test cable status, length and attenuation.

Status: after link up, screen display “online”, if not link up or open circuit, screen display “open circuit”, if cable pair is short circuit, screen display “short circuit”

Length: the max test length is 180 meters, when cable is open circuit or short circuit, can test the cable length, if screen display “online”, the testing result would be not accurate.

Cable quality test: Green is good quality cable, Yellow is Poor quality cable, Red is water poured cable, the attenuation value will be displayed when cable over 10 meters

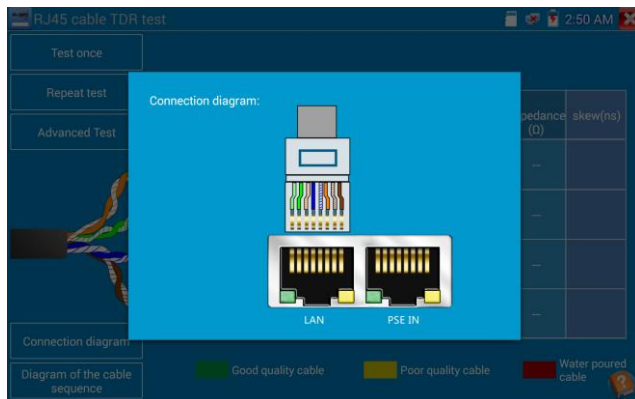


Advanced Test: test cable pair status, length, attenuation, reflectivity, impedance, skew and other parameter.

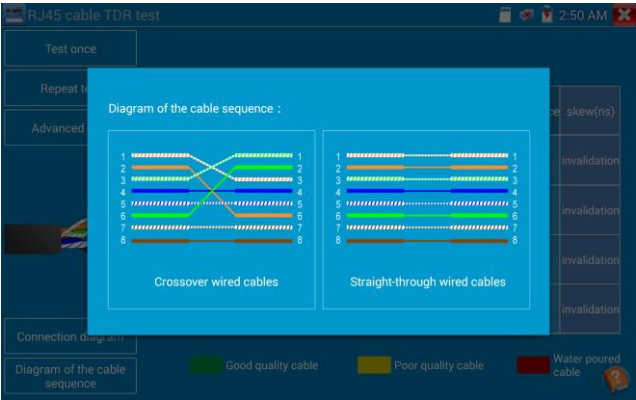
Attenuation reflectivity: after link up, if reflectivity value is 0, it is the best quality communication

Impedance: after link up, if the impedance value is $100\ \Omega$, it is the best quality communication; the range is generally in $85\text{--}135\ \Omega$

Skew: After 1000M link up, when skew value is 0ns, it is the best quality communication, if over 50ns, will cause a Bit Error Rate in the transmission.

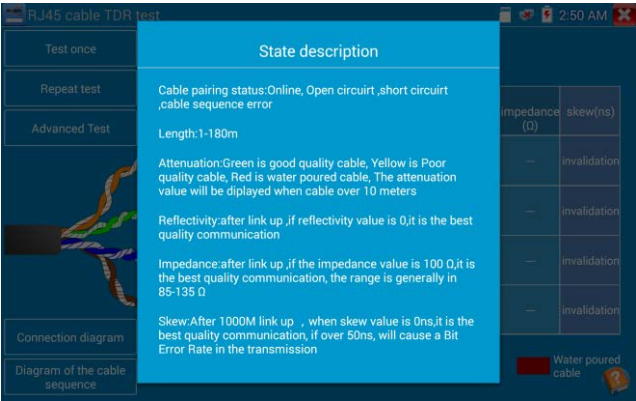


Connection diagram



Cable sequence diagram:

A straight- through and cross-over cable diagram, the cable sequence display for reference




Click “Help”; check the instruction of all parameters.

3.3.21 PoE Voltage test


Click icon  to enter PoE voltage measurement



Connect a network cable from a PoE switch to the IP tester’s PSE IN port. Connect an IP camera or other PoE using node to IP tester’s LAN port, the PoE voltage and the cable’s pin connection status show on the screen.

 **Note:** This test if for measuring the voltage being drawn by the PoE node and the IP tester must be between the PoE switch and the PoE node for this test to work.

Note: The PoE switch must be connected to the PSE IN port. The powered device such as IP camera or other PoE node must be connected to the LAN port.

 **Note:** Do not connect PoE power supply equipment (such as a PoE switch) to the tester’s UTP/SCAN port; otherwise it will damage the tester.


PSE transmission

When PoE / PSE voltage testing, PoE/PSE connect to the tester's PSE "IN" port, the camera connects to tester's Lan port, tester not only can transmit voltage to supply power for camera, but also transmit data at the same time. as well as the computer connect to the PoE/PSE; it can log in connected tester's PoE camera.


3.3.22 12V power input test

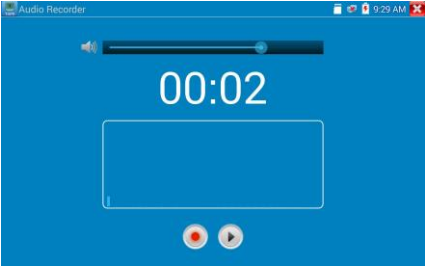
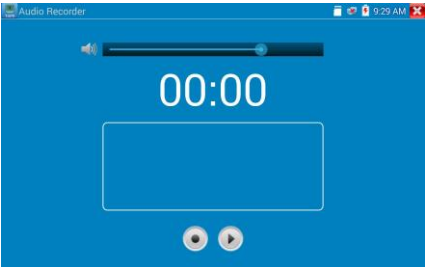
Connect 12V power adaptor to tester’s charging port, then click icon “PoE” to enter voltage measurement app ,screen show the current adaptor input voltage and power. Note: the current 12V input measured power is the battery charging power and the device working power; the measured power will change depending on the different of battery power and backlight brightness.



 **Warning:** Not allow connect device with input power over 17V to tester “12V IN “port, otherwise it will damage the machine.

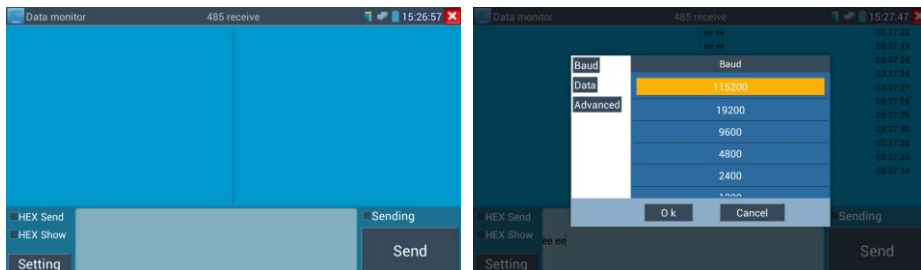
3.3.23 Audio Record

Connect an audio device to the IP tester’s audio input port. Click the  icon to enter the Audio Recorder app. Click the red button to stop, and the unit will prompt you to save the recording



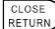
3.3.24 Data monitor

Please click icon  to enter



Click “Setting” to choose the baud rate of RS485; it must be the same as the DVR or the Control

keyboard .The DVR or Control keyboard send the code to the tester, if it can be read, the protocol will shown on the upper right, like Pelco D, if not, like P:---

While the tester receives the code, press the  **key to empty.**


Though the RS485 port, display the PTZ control code of the multifunctional keyboard or the DVR.

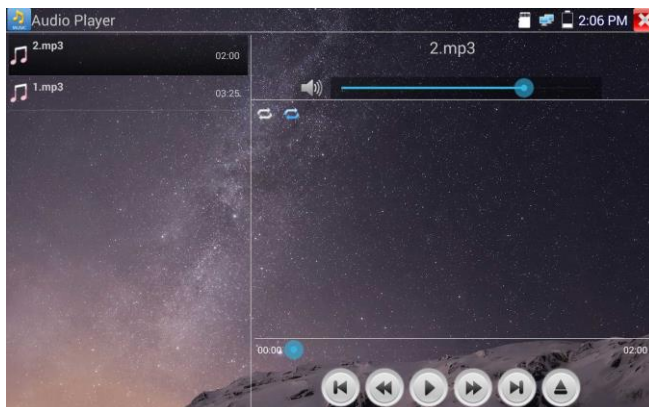
Controller can check the status of the RS485 transmission through the code on the display. (The RS485 communication rate must be the same.)

Application: Check the RS485 communication states of the video optical transmitter whether normal.

Engineer can analyze the protocol and check the data through the displayed code.

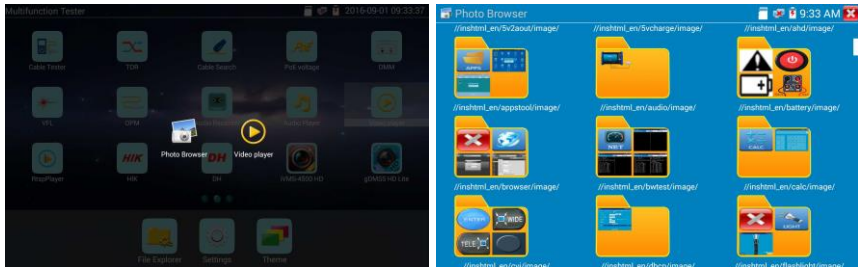
3.3.25 Audio player

Click the icon  to enter. The audio player only supports MP3 format Audio files.



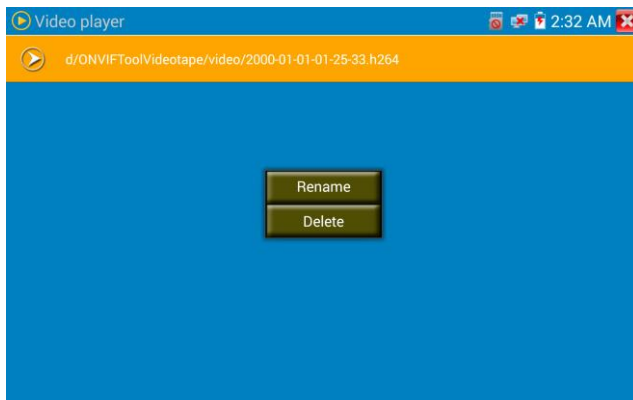
3.3.26 Media Player

Click the icon  to enter



The Media player can browse video and image files. It supports the video formats of MP4, H.264, MPEG4, and MKV. The IP tester recorded files can play directly via the Media player. The Media player will automatically display the video files from the SD card. Click on the desired file to play. Click RETURN to exit.

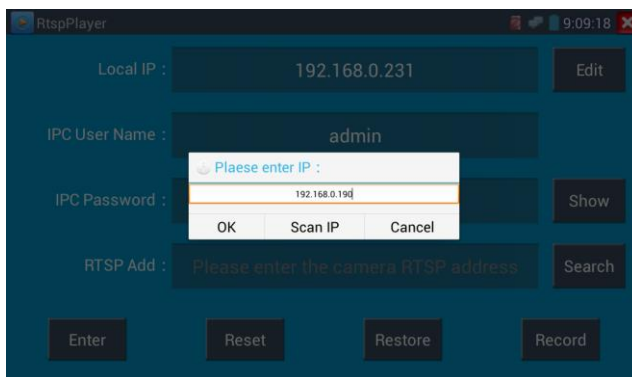
To rename or delete an existing file, press the file name for a few seconds until the screen below appears. You can then rename or delete the file by pressing the desired option.



3.3.27 RTSP Player

The RTSP Player app will allow you to view the RTSP video stream from an IP camera. If you were unable to view your camera via the ONVIF or IPC Test apps, it is possible your camera will have an RTSP stream and you can view live video.

From the main menu, select the “APP Tool” folder and then select the “RTSP Player” to open the app. If the IP camera uses MJPEG, select the RTSP icon. If the IP camera uses H.264, select the “RTSP HD” icon.



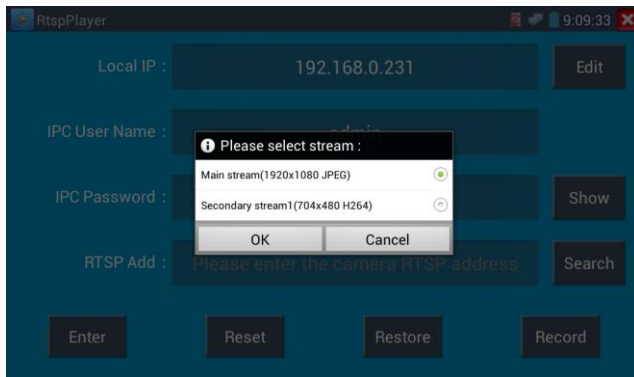
Local IP: This is the IP testers IP address.

RTSP Add: This is where you can manually enter the IP camera’s RTSP URL or click on Search to search the network for cameras that use an RTSP stream.

IPC Username: Enter the IP camera’s user name.

IPC Password: Enter the IP camera’s password.

Once you have entered all the necessary information, select Enter at the bottom left to view the RTSP stream.



Note: in the event the ip tester does not auto detect the rtsp stream, refer to the specific camera manufacturer for the specific rtsp stream url. you may find this on line with a search of the camera model number and the word rtsp.

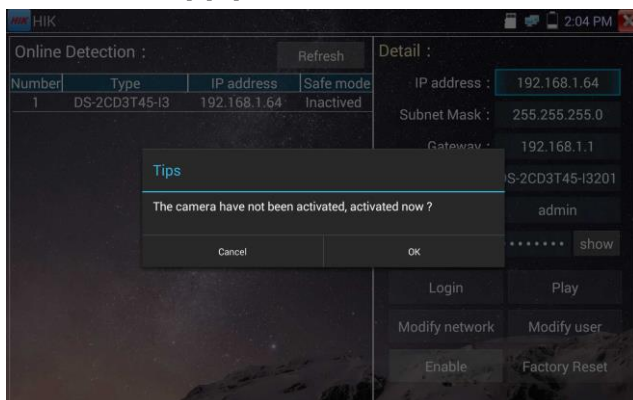
3.3.28 Hik test tool

Hik test tool app is design for activating and debugging Hikvision camera. It can auto-identify

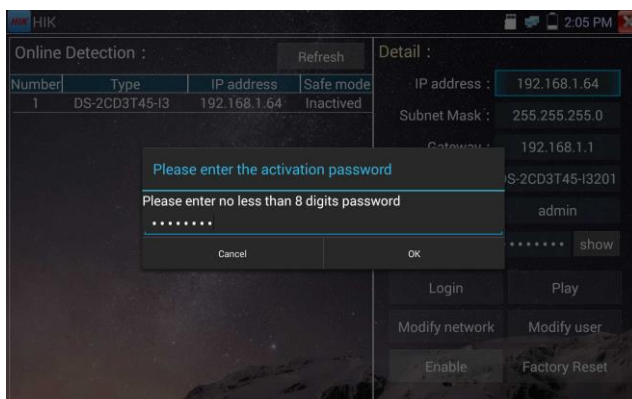
Non-activated Hikvision camera, also can display image from the Hikvision camera.

Tap icon  to enter

1. **Hikvision activation:** When connect the non-activated Hikvision camera to the tester, it will auto identify and display “Unactivate” at safety mode. Select needed activate the camera, click bottom right corner button “Enable”, pop-up “the camera is not activate, activate now”?

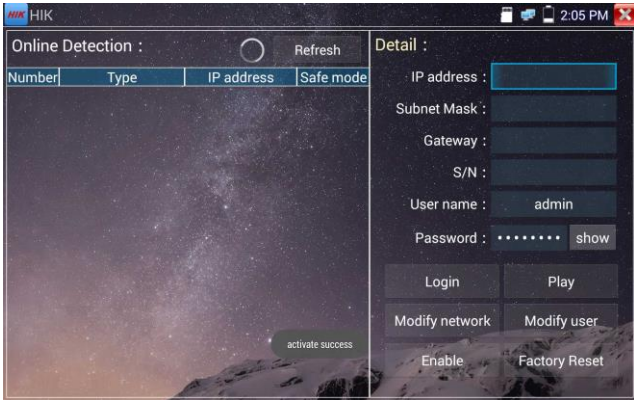


2. **Input password:** Input new password, tap “ok” to activate



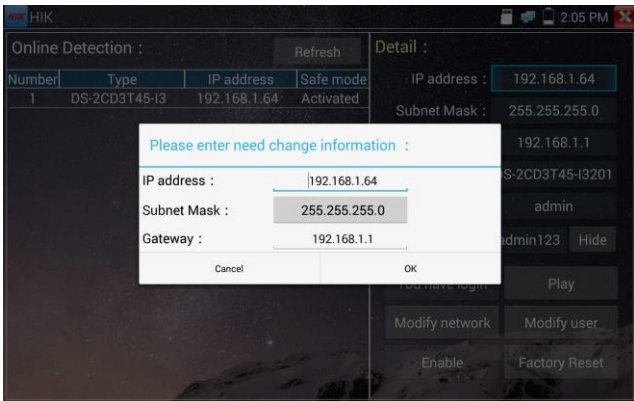
3. **Confirm activation**

After activating the camera, the program default modifies the camera IP. Activated multiple cameras in the local area Network, and pop-up menu to modify IP, improve project efficiency.

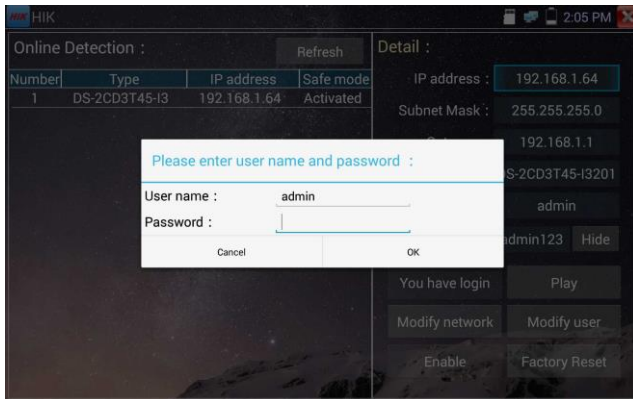


Play: display image from the camera

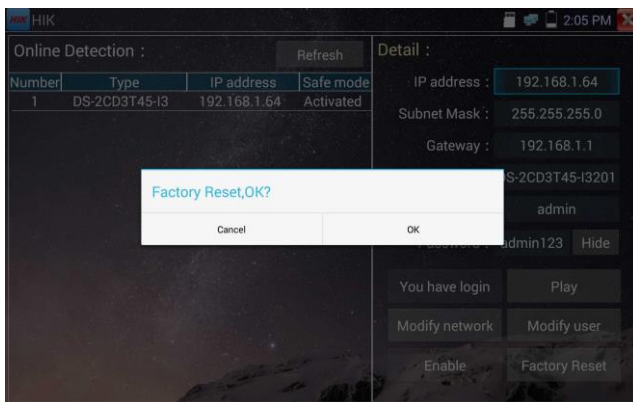
Modify network information: Change the camera IP address, subnet mask and gateway etc.



Modify user information: Modify the camera's user name and password.



Factory Reset: Camera factory reset



3.3.29 Dahua test tool

Dahua test tool is developed for installation and debugging of the Dahua IP camera, it can display image, and modify IP, user name and password etc. Making Dahua camera test more convenient and quickly.

Click "DH" icon  , to enter Dahua test tool.

DH

12:28 PM

Online Detection :

Refresh

Number	Type	IP address
1	IPC-HF3100	192.168.0.188

Detail :

IP address :

192.168.0.188

Subnet Mask :

255.255.255.0

Gateway :

192.168.0.1

S/N :

PZC4AV078W00212

User name :

admin

Password :

.....

show

Login

Play

Modify network

Modify user

Factory Reset

Select the camera of the online detection menu, if the camera support non-verification login, you can click “play” directly, and view the image.

DH

12:28 PM

Online Detection :

Refresh

Number	Type	IP address
1	IPC-HF3100	192.168.0.188

Detail :

IP address :

192.168.0.188

Subnet Mask :

255.255.255.0

Gateway :

192.168.0.1

S/N :

PZC4AV078W00212

User name :

admin

Password :

.....

show

Login

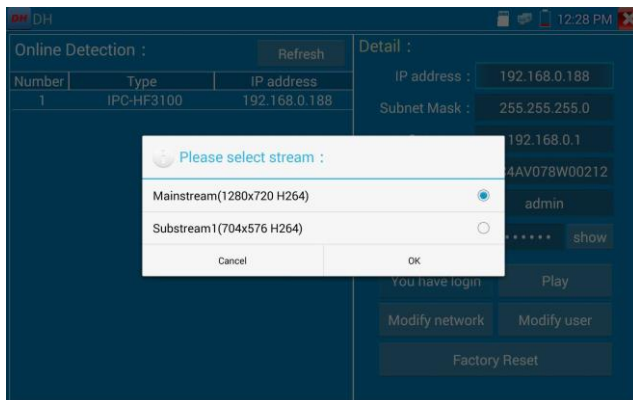
Play

Modify network

Modify user

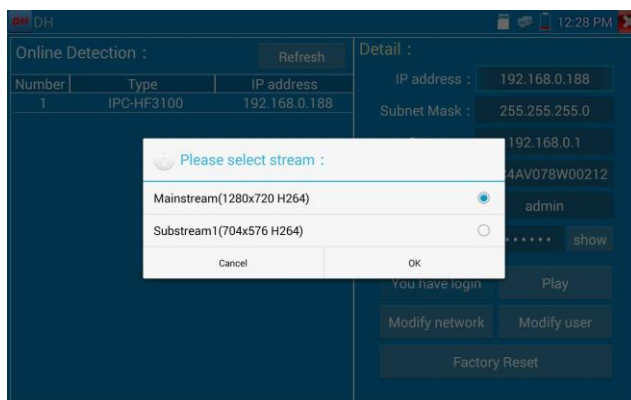
Factory Reset

Pop up stream menu, select mainstream or second stream to test

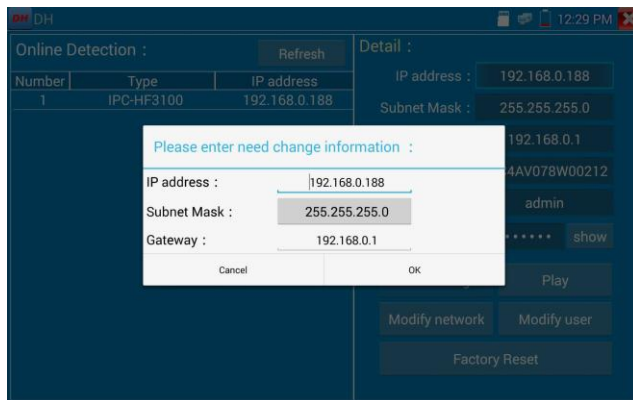


If the camera not supports non-verification login, please select “camera” of online detection menu, and input correct user name and password, then click “log in”. After logging successful, you can test it.

Play: select mainstream or seconded stream, IP camera live video display.

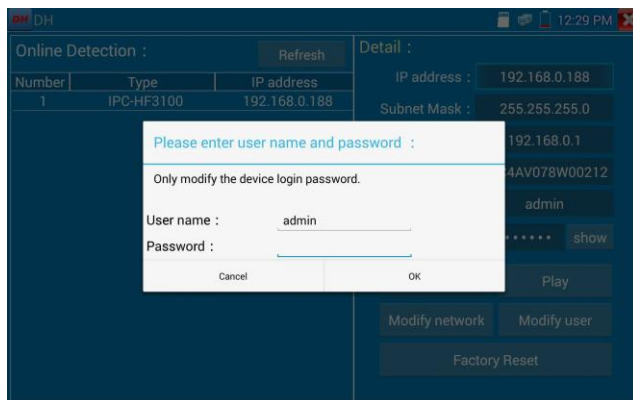


Modify network information: modify camera parameter, such as ip address, subnet mask, gateway etc.

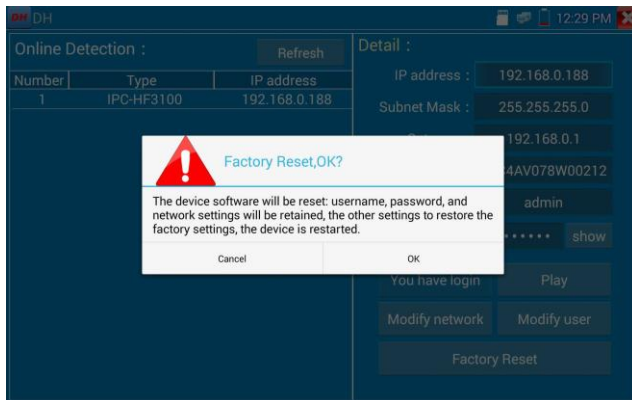


Modify user information: modify camera user name and password, which is onvif, Dahua test tool, IPC

TESTE user name and password, not web user name and password.




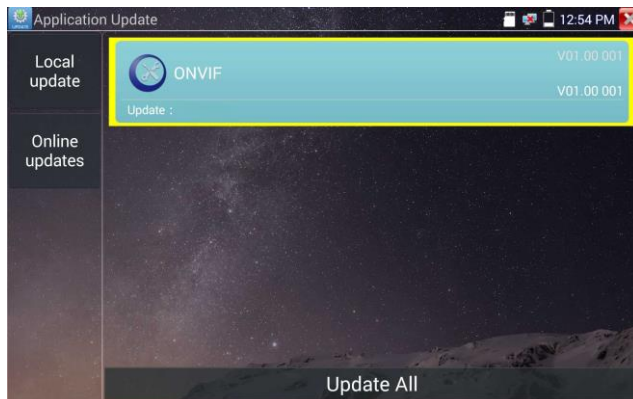
Factory reset setting: camera will be soft reset, and the device's user name, password and network set be saved. Other settings information is factory reset.



3.3.30 Update

Copy the downloaded update file to SD card "update" directory, if no directory, please create one.

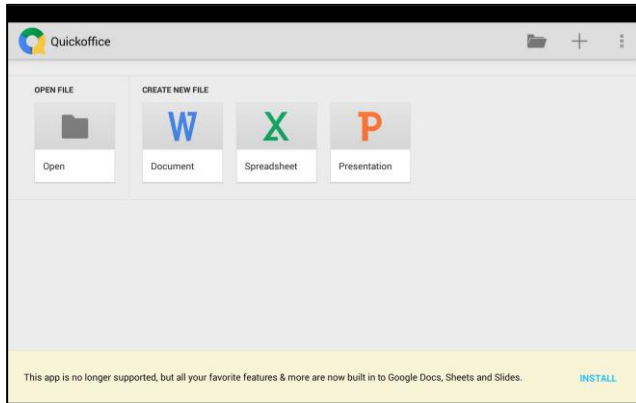
Click the  icon to open the Update menu. Select "Local Update" to update via the SD card or select "Online Update" to check for updates on the internet. If there are applications that need updating, the applications will be displayed on the




If there are update programs, applications will be listed in the interface, click related applications, update to the latest version.

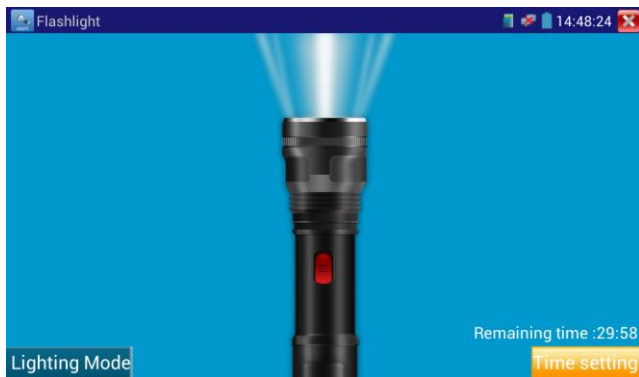
3.3.31 Office


Quick office app (support excel, word, ppt format) doc. editable



3.3.32 LED Flashlight

It is convenient for the installation or maintenance in the evening or in the dark. Click icon  to enter



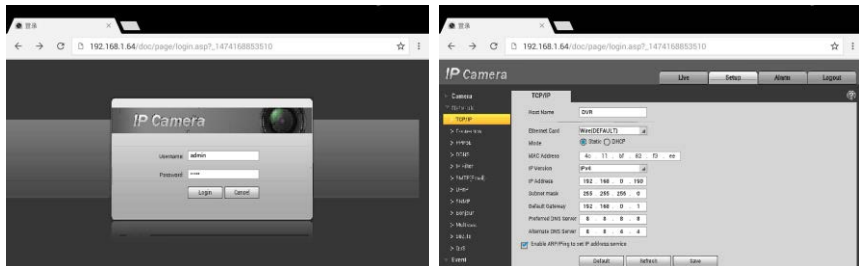
While in the flashlight app, click the red button to turn on the LED lamp. Press it again to turn it off. If you don't press the red button  to shut off the lamp and press the button to exit the app, the lamp will stay on. Click the Time Setting button to set a timer that will shut off the lamp.

3.3.33 Browser

Click icon  to enter

Type in the camera's IP address and press "Go" to access the IP camera's interface.

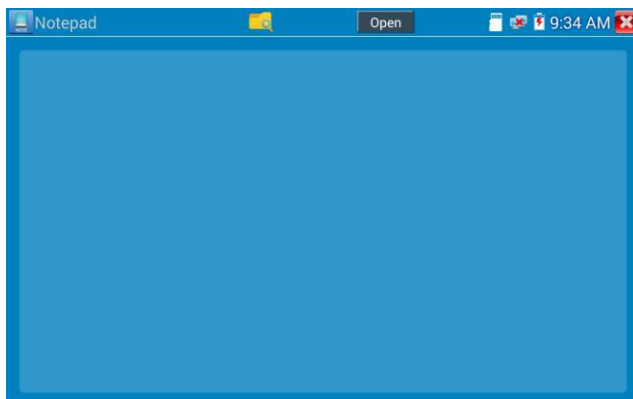
NOTE: You will not be able to view live video in the web browser. For viewing video, use the IP tester's live camera view Apps




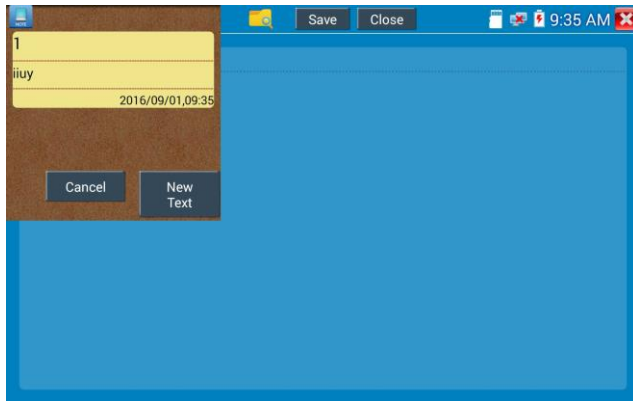
The IP camera and IP tester be on the same network segment for the browser to interface with the camera. If they are not in the same segment, click the button or press "RETRUN" to exit. Open the "Settings" app from the main menu to change the IP tester's network settings to match those of the IP camera.

3.3.34 Notepad

Notepad can be used to record the important testing results, click the key "Save" to save the contents. Notepad can auto record the storage date and time.



please click  to view the notepad, all saving contents display. Click each record bar to show the details. Press the record bar for several seconds, prompt whether delete it



3.3.35 System Setting

Click icon  to enter



Language: Select your desired language: English, Chinese, Korean, Russian, Italian, Polish, Spanish,

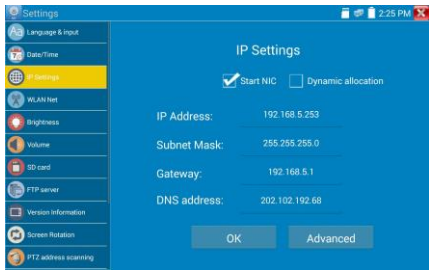
French or Japanese.

Typewriting: You can select typewriting or install other typewriting:



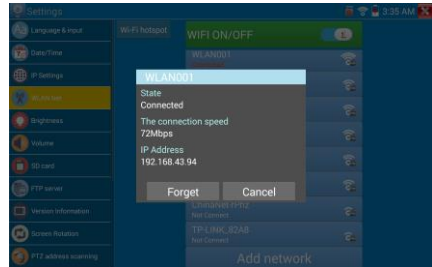
Date/Time: Set the Date/time of the IP tester

IP setting: Manually set the IP address, Subnet Mask, Default Gateway and DNS address or select “Dynamic allocation” to use DHCP. To test multiple network segments, click “Advanced” and then click “Add” to enter another IP address for the IP tester

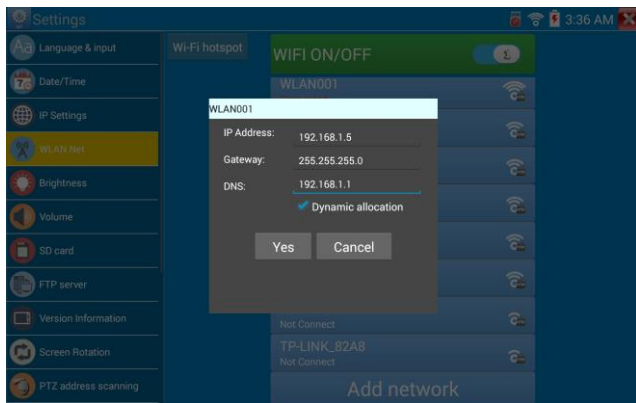


After setting an advanced IP address (refer to the photos above), the unit can test two network segments (192.168.5.0) and (192.168.1.0)

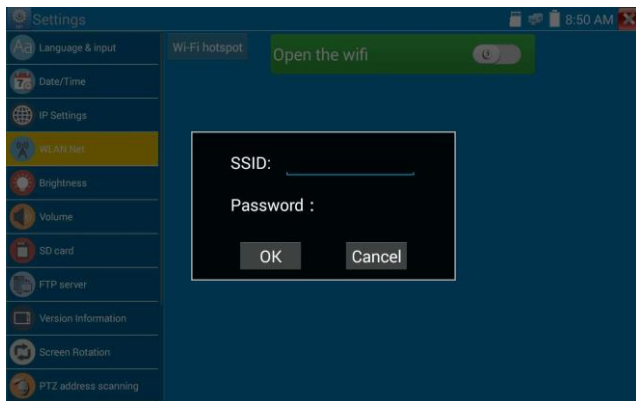
WLAN Net: Turn WiFi off or on by pressing the “Open the wifi” button. Once WiFi is turned on, and click connected WIFI, it will scan for wireless networks in your area.



Select and press “WIFI” several seconds, to set static IP address.



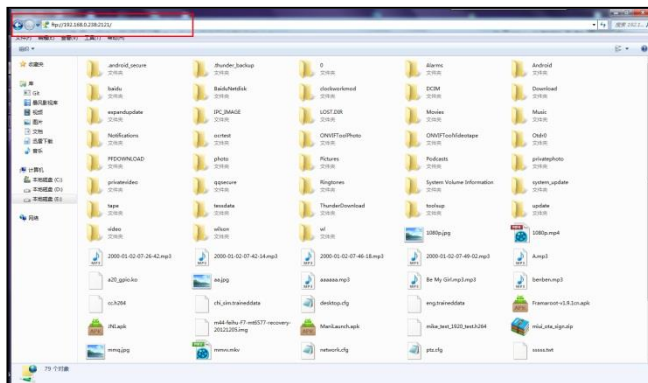
Wi-Fi hotspot: input “SSID” name and “password”, and then click “ok” to create Wi-Fi hotspot.



FTP server: Once the IP tester connects to a network, a computer can be used to read the SD card files via FTP



Start the FTP server and then input the tester's FTP address in the PC's address bar. This will enable the PC to read, copy and edit the files from the SD card without the use of SD card reader.



Version Information: shows applications version information, if press any apps icon several seconds

to uninstall.

Screen display rotation: Click on “Screen Rotation” to flip the IP tester’s display 180 degrees. This function is very convenient for the user to connect the LAN cable on the bottom of the unit without having to flip the unit itself.

PTZ address scan: You can toggle the PTZ Address scan off or on before entering the “PTZ controller” app. This needs to be turned on in order to use the PTZ Scan feature of the PTZ app.

User Feedback: if you have any comments or suggestions for the tester, please connect it to network and write your feedback.

Lock Screen: the meter default is not locked. You can choose password Lock screen, pattern Lock screen or “NO”.

Password Lock Screen: Set password, you can input digitals, letters or characters as password, input it again to confirm .when the meter is in standby mode or turn it on, you can input your password to enter.

Pattern Lock Screen: Drawing a pattern to lock. While the meter is in standby mode or turn it on, you can input your pattern to enter.

Modify Lock screen password, you need input lock password again. Select password Lock screen or pattern Lock screen to reset lock screen password. After reset pattern lock screen, you need to draw a new lock pattern.

Restore the factory settings: If the tester to restore factory settings, all your personal files and apps will be removed.

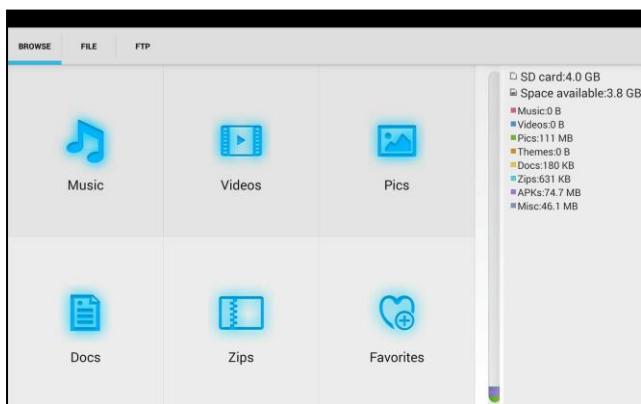
3.3.36 File explorer

Click “File “on the top bar tool, can select internal or external storage. Click on the upper right corner Icon”... “.will pop-up menu, you can select other operation or exit.



Browse

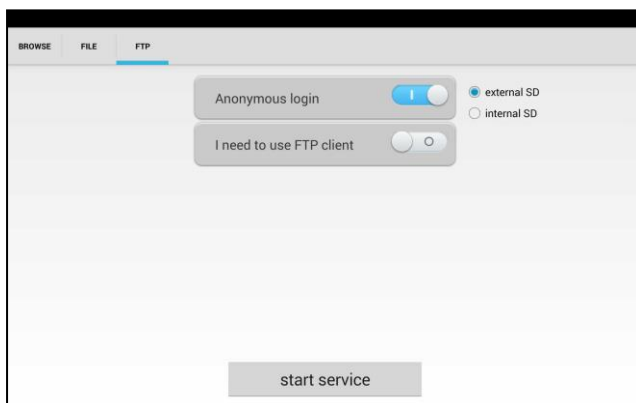
It includes Music, Videos, Pictures, Documents, zip file etc. It is convenient to view and manager.



FTP server

You can choose internal or external SD card.

Other operation details Please refer to FTP settings.



3.3.37 Theme

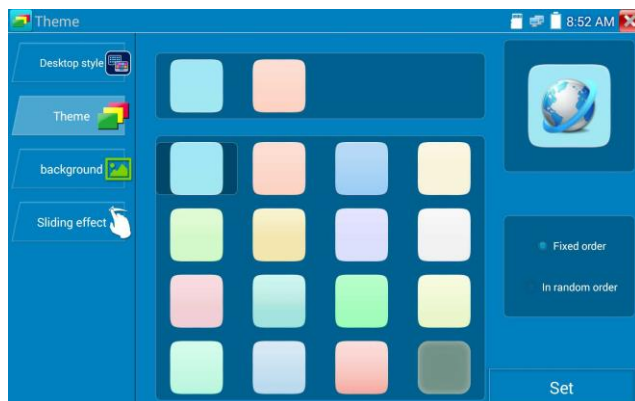
Click Theme icon to enter themes setting.

Desktop style: you can select Lite mode or normal mode.

Theme:

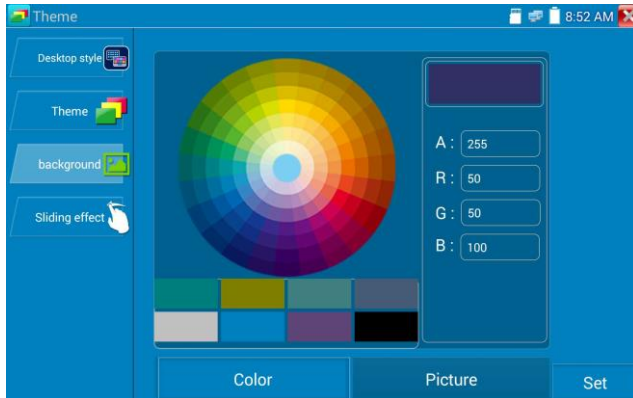
Pressing square area's any color icon several seconds, the selected color icon will be auto move the rectangle area, if you press selected color several seconds, and it will be auto deleted.

Theme colors include fixed order and random order, and click "set" to save.

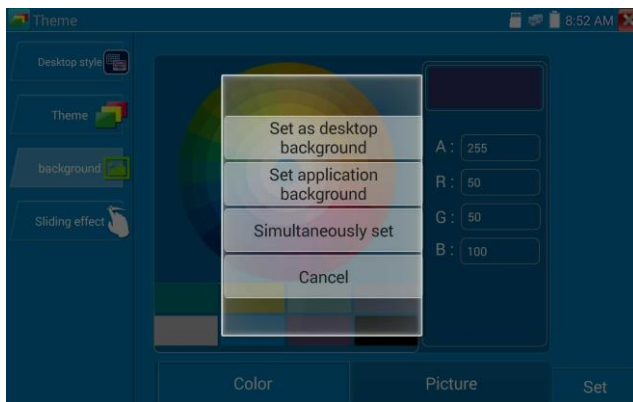


Color

When set background color, you can select colors from Color Phase, and also can input color's RGB to set.



After finished color setting, click “set” to set it as desktop or application background.



Set as desktop background: Setting color as desktop background.

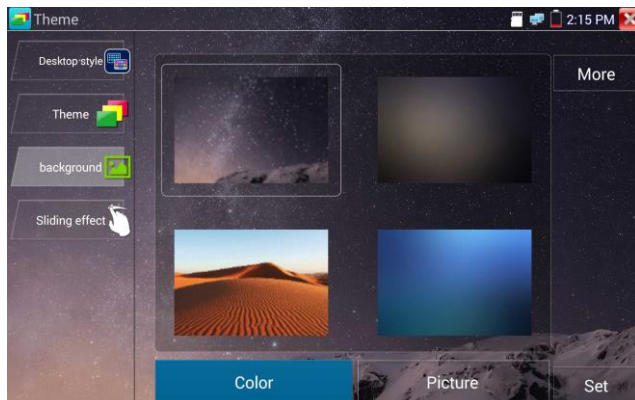
Set as application background: Set color as application background.

Set at the same time: Setting color as desktop background and application background.

Cancel: Cancel current setting.

Picture:

Click Picture to select one, and set as temporarily background to view setting effect. Click “more” to select pictures from local file, and click set to set picture as background.



Sliding effect:

Tester's sliding effect includes stereo effect, folding effect, Left and right folding, rotate effect, selecting one of effect to view slide effect in the square area, and click “set” to save.



3. 4 Audio test

You can test the audio input from audio pickup devices by connecting the audio pickup device to the IP tester with the supplied audio cable.



3.5 HDMI output

The built in HDMI output port can output live video from an analog or IP camera, recorded files, media files and images to HDTV monitors. Connect an HDMI cable from the IP tester to an HDTV monitor at any time. It supports up to 1080P resolution.

3.6 PoE power output

The IP tester supports PoE (Power over Ethernet) output to an IP camera via the LAN port. Data transmission and 48VDC use the network cable's 1, 2, 3, and 6 pins to deliver power. If the IP camera supports PoE, you can directly connect to the camera without the use of an external power supply.



Notice

- Please make sure the cable connected to the tester's Lan port is straight-line cable and has no short circuit, otherwise will damage the tester.
 - Before using PoE power output, please check the IP camera whether supports POE powered.
- Otherwise



it will damage the IP camera.

c. The instrument's PoE maximum power output is 24W. If Ultra- high-power load happens, the tester will enter protection mode.

3.7 DC12V 2A power output

When the IP tester is turned on, the 12VDC power output ON by default. The smaller end of the supplied converter cable connects to the tester's DC12V/2A OUTPUT and the other end connects to the camera's power input.



Application

Power output function is mainly used in the camera field demonstration and testing, meanwhile, for some camera installation sites, If there is no power outlet for the adapter to power the camera, the tester can offer temporary power for it. But we do not suggest tester supply power for a long time.



Notice:

- a. Don't input any power into the "DC12/2A OUTPUT" port of the tester.
- b. Man-made damage is not within our company's warranty.
- c. The IP tester's power output capacity is 2A. If the IP camera uses more than 2A, the tester will automatically enter a protection mode.

The IPC tester power output is close to 2A, if the IP camera's power is over 2V, the tester will auto enter protection mode. Disconnect all the connections of the tester and then connect the tester with power adaptor to resume the tester.
- d. Disconnect all cables from the tester and reboot it to resume using the tester.
- e. Make sure the tester has a sufficient charge otherwise the tester will not able to provide enough output power.

3.8 USB 5V 2A power output

When the tester is turned on, the DC 12V and DC 5V power output functions are automatically turned on. If the IP tester is turned off, the DC 5VUSB can still be used to power an external USB device.

NOTE: The USB port is for power only and not data.



4. Specifications

4.1 General Specifications

Model	
Display	New 7 inch IPS touch screen CCTV tester ,1280*800 resolution
Network port	10/100/1000M auto adjust, RJ45
WIFI	Built in WIFI,speeds150M, allows you to connect to a wireless network and view IP cameras
H.265 Mainstream test	New hardware decoding,4K,H.265/H.264 camera image display by mainstream testing
IP discovery	auto-scan the whole network segment camera IP
Rapid ONVIF	search camera quickly, auto log in and display image from the camera, activate Hikvision camera
Hik test tool	Activate Hikvision camera, display image from the camera, modify IP, user name and password parameters etc
DH test tool	Dahua camera test, modify IP, user name and password parameters etc
IP camera type	ONVIF,ONVIF PTZ, Dahua IPC-HFW2100P, Hikvision DS-2CD864-E13, Samsung SNZ-5200, Tiandy TD-NC9200S2, Kodak IPC120L, Honeywell HICC-2300T, RTSP Viewer
CVI video signal test	1 channel CVI input (BNC interface, resolution support 720p 25,30,50,60fps/ 1080p 25,30fps, 3MP, 5MP & 8MP
TVI video signal test	1 channel TVI input (BNC interface) ,resolution support 720p 25,30,50,60fps/ 1080p 25,30fps, 3MP, 5MP & 8MP
AHD video signal test	1 channel AHD input (BNC interface) ,resolution support 720p 25,30fps / 1080p 25,30fps, 3MP & 5MP
Analog video test	1 channel BNC Input & 1 channel BNC Output , NTSC/PAL (Auto adapt)
Zoom Image	Supports Analog and IP camera image zooming & movement
Snapshot, Video	Capture current images and record live video as JPG file. Media player will

record and playback	view photos and playback video
HDMI IN	HDMI IN, Support 720×480p /720×576p /1280×720p /1920×1080p /1024×768p/1280×1024p /1280×900p /1440×900p。
HDMI output	1 channel HDMI output, supports up to 1080p
RJ45 cable TDR test	RJ45 cable TDR test and cable quality test, to test cable pair status, length, attenuation reflectivity, impedance, skew and other parameter.
12V/2A power output	Output DC12V/2A power to camera
USB 5V power output	5V 2A power output only ,NO data
PoE power output	48V PoE power output, Max power 24W
Screen management	Lite mode and normal model available. Under normal mode, you can change icons sequence and self-define the number of icons in each page
Theme	Self-define icons, desktop and application interface background, modify interface sliding effect
drop-down menu	PoE power switch ,IP setting, WLAN switch , HDMI IN functions etc screen lock, password lock screen or pattern lock
Audio test	1 channel audio signal input and 1 channel audio signal output to connect headphones
PTZ control	SupportRS485 control, Baud 600-115200bps, Compatible with more than 30 protocols such as PELCO-D/P, Samsung, Panasonic, Lilin, Yaan, etc
Color bar generator	Output one channel PAL/NTSC color bar video signal for testing monitor or video cable.(red, green ,blue, white and black color)
UTP Cable tester	Test UTP cable connection status and display on the screen. Read the number on the screen
Data monitor	Captures and analyzes the command data from controlling device, also can send hexadecimal
Network test	IP address scan, link scan, and Ping test. Quickly search the for IP camera's IP address on your network

PoE /PSE voltage test	Measures PoE switch voltage and displays pin configuration
POWER	
External power supply	DC 12V 2A
Battery	Built-in 7.4V Lithium polymer battery ,5000mAh
Rechargeable	After charging 5~6 hours, normal working time 10hours
Parameter	
Operation setting	Capacitive touch screen, OSD menu, select your desired language: English, Chinese, Korean, Russian, Italian or Polish, etc
Auto off	1-30 (mins)
General	
Working Temperature	-10°C---+50°C
Working Humidity	30%-90%
Dimension/Weight	240mm x 154mm x 46mm / 620g

The data above is only for reference and any change of them will not be informed in advance. For more detailed technical inquiries, please feel free to call the Technical Department of our company.