



**N2NVR4POE**

4-Channel NVR with 4-Ch. POE

**N2NVR8POE**

8-Channel NVR with 8-Ch. POE

**N2NVR16POE**

16-Channel NVR with 16-Ch. POE

**N2NVR3216POE**

32-Channel NVR with 16-Ch. POE



### Plug and Play!

Plug & Play with Northern N2 Series Cameras!  
Cameras Sold Separately



### NORTHERN VIEW

Free Mobile App for iPhone,  
iPad, Android™ & Android™ Tablets

### FEATURES:

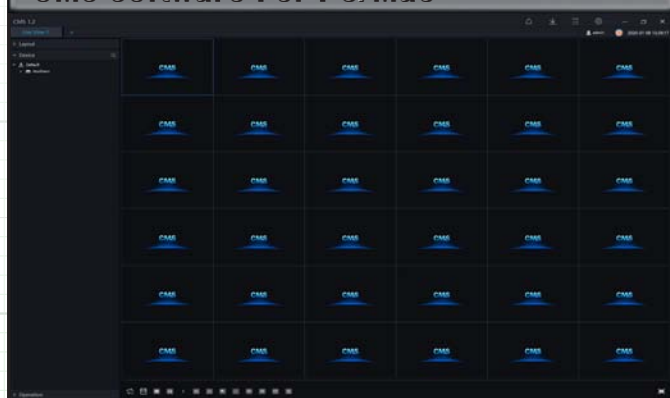
- ◆ Real-Time 30FPS/Ch Recording @ 1080p
- ◆ Up to 8MP Recording 4-8-16 Channel
- ◆ Up to 12MP Recording on 32 Channel
- ◆ H.265 & H.264 Recording Compressions
- ◆ NorthernView Mobile App for iPhone, iPad & Android™
- ◆ Built-in Motion Detection & Privacy Mask
- ◆ Free CMS Software
- ◆ Supports P2P Operation
- ◆ Up to 8TB Storage Capacity (4Ch)
- ◆ Up to 16TB Storage Capacity (8, 16Ch)
- ◆ Up to 32TB Storage Capacity (32Ch)
- ◆ Integrated 40W/80W/120W POE Switch (4/8/16-Ch)
- ◆ Integrated 160W POE Switch (32Ch)
- ◆ Included Mouse for NVR Control
- ◆ Dual USB for Mouse Control & Copying Video
- ◆ Simultaneous HDMI & VGA Outputs (4Ch)
- ◆ Independent HDMI & VGA Outputs (8, 16, 32Ch)
- ◆ Up to 16 Channel Synchronous Playback
- ◆ Accepts ONVIF Protocols
- ◆ Rack Mount Hardware Included (8, 16, 32Ch)
- ◆ Built-In Audio & Alarm
- ◆ Supports 2-Way Audio

Android is a trademark of Google LLC.

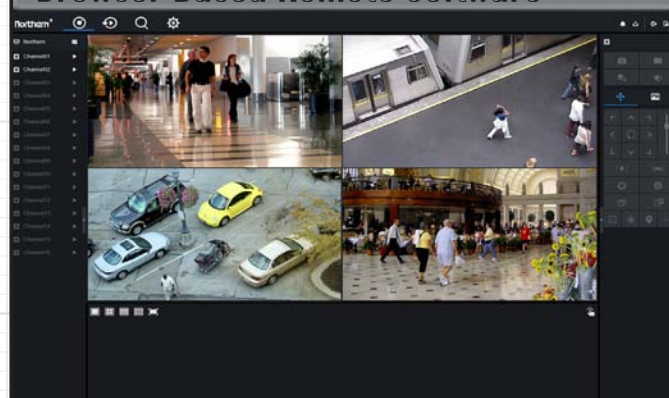


## N2 SERIES NETWORK VIDEO RECORDERS WITH POE

### CMS Software For PC/Mac



### Browser Based Remote Software



## Learn More

### H.265 Recording Compression

H.265 compression format provides both increased video quality and reduced bandwidth consumption.

### Mobile App for iPhone, iPad & Android™

NorthernView Mobile App allows for viewing and playback from multiple mobile devices.

### Real Time 1080p Recording

All Models record up to 30FPS per Channel at 1080p resolution.

### Up to 32TB Storage Capacity

Large storage capacities allows for longer storage of recording video. Up to 8TB (4Ch), 16TB (8-16Ch) 32TB (32Ch).

### Built in Motion Detection

Maximize your recording duration by only recording when Motion is detected by the NVR.

### Built in POE Switch

4Ch/40W, 8Ch/80W, 16Ch/120W & 32Ch/160W POE Switch for connecting and powering cameras directly from the NVR using only a single Category 5/6 cable.

### Free N2 Series CMS Software for PC & MAC

Connect to Multiple NVR's or individual IP cameras from a single computer with the included N2 Series CMS software.

### HDMI & VGA Video Outputs

Simultaneous HDMI & VGA outputs on 4Ch model. Independent HDMI & VGA outputs on 8-16-32Ch Models.

### Supports DDNS

DDNS feature insures you will always stay connected to your NVR when using a Dynamic IP address.

### P2P Operation

Peer to Peer functionality makes mobile viewing setup easier by bypassing the need to configure port forwarding in most routers.

### Dual USB Ports

NVR's include dual front USB ports for easy copying of video to a USB drive and mouse control.

### Remote Accessibility

Remotely connect, monitor, playback, record and change NVR settings via IE & Chrome browsers.

### Plug & Play (N2 Series Only)

The N2NVR Series will plug and play with all N2 Series IP Cameras. Plug & Play automatically finds and configures Northern N2 Series cameras.

## Hard Drive Configurations / Part Numbers / Package Contents

DRIVE SIZE	4 Channel	8 Channel	16 Channel	32 Channel
2TB	N2NVR4POE2T	N2NVR8POE2T	N2NVR16POE2T	N/A
4TB	N2NVR4POE4T	N2NVR8POE4T	N2NVR16POE4T	N2NVR3216POE4T
6TB	N2NVR4POE6T	N2NVR8POE6T	N2NVR16POE6T	N2NVR3216POE6T
8TB	N2NVR4POE8T	N2NVR8POE8T	N2NVR16POE8T	N2NVR3216POE8T
12TB	N/A	N2NVR8POE12T	N2NVR16POE12T	N2NVR3216POE12T
16TB	N/A	N2NVR8POE16T	N2NVR16POE16T	N2NVR3216POE16T
18TB	N/A	N/A	N/A	N2NVR3216POE18T
24TB	N/A	N/A	N/A	N2NVR3216POE24T
32TB	N/A	N/A	N/A	N2NVR3216POE32T

### PACKAGE CONTENTS

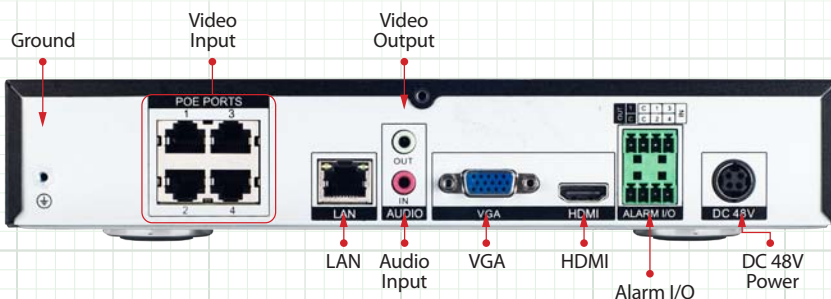
Power Cord  
Power Supply (4 & 8Ch Units only)  
Quick Start Manual  
Rack Mount Hardware (8, 16, 32Ch only)  
Mouse



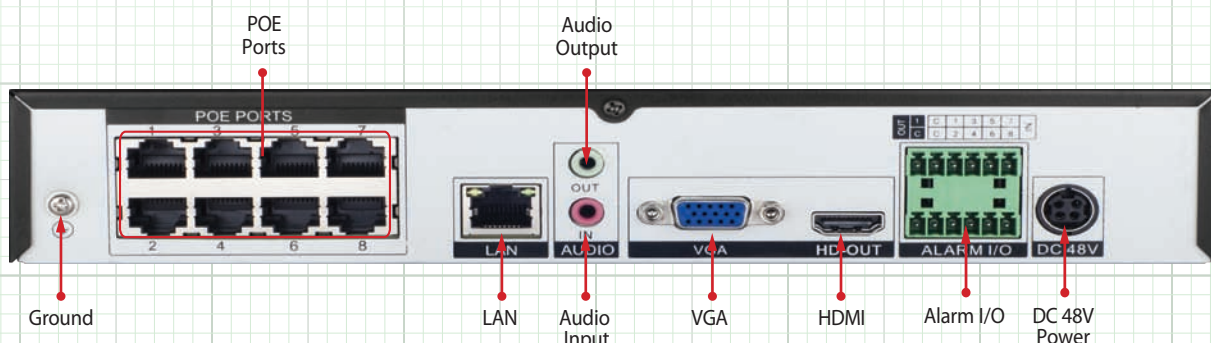
## N2 SERIES NETWORK VIDEO RECORDERS WITH POE

### Rear Panel Definitions / Connections

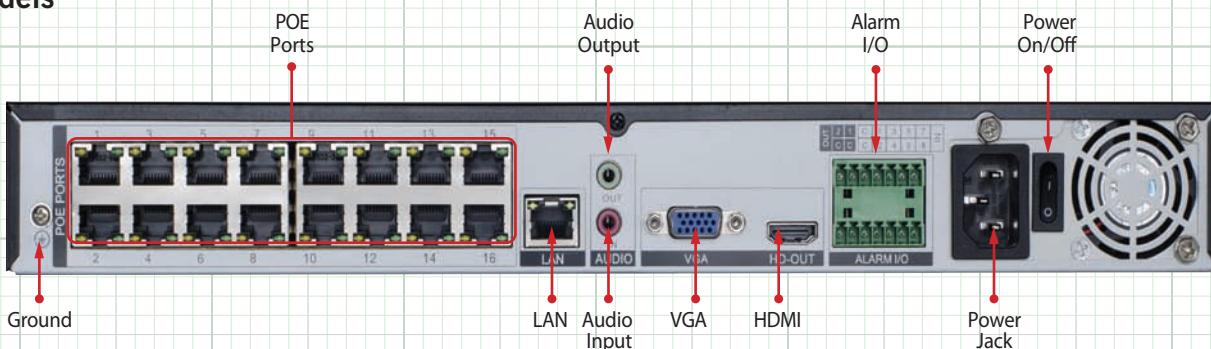
#### 4 Ch. Models



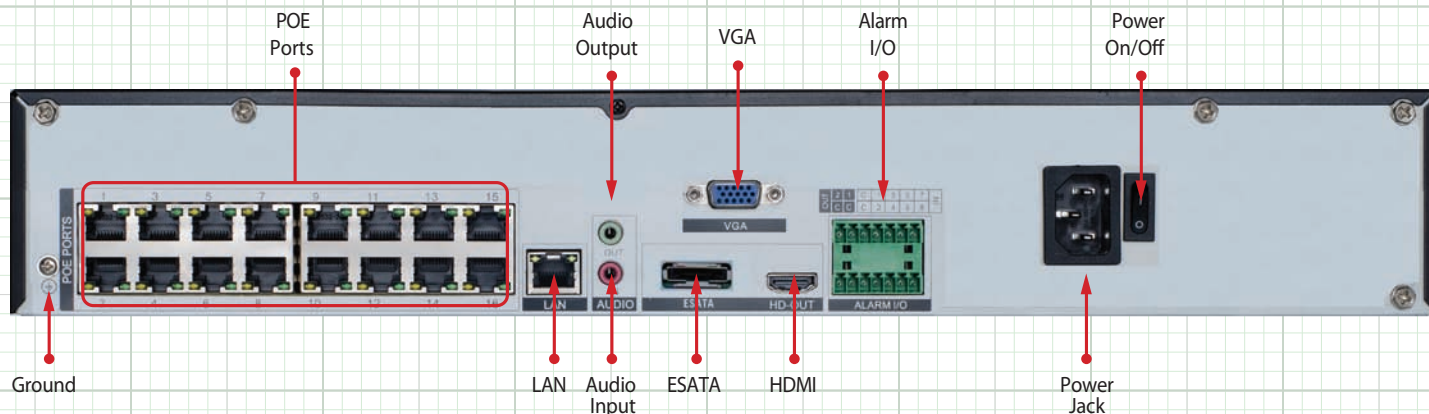
#### 8 Ch. Models



#### 16 Ch. Models



#### 32 Ch. Models



## N2 SERIES NETWORK VIDEO RECORDERS WITH POE

### N2NVRPOE Series Specifications

	FEATURES	N2NVR4POE	N2NVR8POE	N2NVR16POE	N2NVR3216POE
Video/Audio Input	IP Video Input	4-Channel	8-Channel	16-Channel	16-Channel
	Two-Way Audio Input	3.5mm Audio Jack			
	NTSC / PAL	Yes			
	Plug & Play Models	"N2 Series Only" N2IP4B, N2IP4D, N2IP4D4MM, N2IP4T, N2IP4W, N2IP4AFD, N2IP4AFB, N2IPPTZ30X			
Network	Incoming Bandwidth	40 Mbps	80 Mbps	160 Mbps	320 Mbps
	Outgoing Bandwidth	40 Mbps	80 Mbps	160 Mbps	320Mbps
	Remote Connection	Up to 9 Users			
Video/Audio Output	Recording Resolution	12MP (32ch Only) / 8MP / 6MP / 5MP / 4MP / 3MP / 1080p / 720p / D-1			
	Frame Rate	12MP @ 20fps (32ch Only), 8MP / 6MP / 5MP / 4MP / 3MP / 1080p / 720p / D-1 @ 30fps			
	HDMI Output Resolution	3840 x 2160, 1920 x 1080, 1440 x 900, 1280 x 1024			
	VGA Output Resolution	1920 x 1080, 1280 x 1024, 1280 x 720			
	Audio Output	3.5mm Audio Jack - For Two-Way Audio Only			
Decoding	Live / Playback Resolution	12MP (32ch Only) / 8MP / 6MP / 5MP / 4MP / 3MP / 1080p / 720p / D-1			
	Playback Capability	1Ch-8MP / 4Ch-1080P@30fps	1Ch-8MP / 4Ch- 1080P / 8Ch-D1@30fps	1Ch-8MP / 4Ch- 1080P / 9Ch-D1 / 16ch D1@30fps	1Ch-12MP@20FPS / 4Ch-8MP / 9Ch-1080p / 16Ch-1080p / 32Ch-D1 @ 30FPS
Recording & Playback	Compression	H.265 , H.265+, H.264, H.264+			
	Record Mode Types	Manual, Schedule (Regular, Continuous), Motion Detection, Alarm In			
	Bit Rate (Per Channel)	100Kbps ~ 6000Kbps			100Kbps ~ 8000Kbps
	Pre & Post Recording	Auto Pre Recording based on # of Cameras Connected / Post Record (30 sec ~ 60 sec adjustable)			
	Redundant Recording	N/A			Requires 4x HDD
	Recording Parameters	Independent for Each Channel (Resolution, Frame Rate, Bit Rate, etc.)			
	Zooming	Yes - Digital Zoom Available in Live View & Playback			
	Synchronous Playback	Up to 4Ch	Up to 8Ch	Up to 16Ch	
	Playback Controls	Play, Pause, Stop, Rewind, Fast Play, Slow			
	Searching	Time / Date, Alarm, Picture Grid, Event			
Hard Disk	SATA	1x	2x		4x
	Capacity	Up to 8TB			Up to 8TB
	Max Storage	8TB	16TB		32TB
	RAID	N/A			RAID 5,6,10
	eSATA	N/A			Yes
	HDD Detection	Built-IN SMART Detection			
External Interface	Network Interface	1 RJ-45 port (10/100Mbps)		1 RJ-45 port (10/100/1000Mbps)	
	USB Interface	2x USB 2.0			2x USB 2.0, 1x USB 3.0
	Alarm In/Out	4/1	8/1	8/2	2/2
	CMS Software	Included NorthernView N2 Series CMS			
PoE	Network Interface	4Ch 100Mbps	8Ch 100Mbps	16Ch 100Mbps	
	Maximum Power	40W	80W	120W	160W
	Supported Standard	IEEE 802.3af			
General	Power Supply	DC48V/1.25A	DC48V/2.5A	AC100~240	
	Consumption (no HDD)	< 5W			< 15W
	Operating Temperature	-10 °C ~ 50 °C (14 °F ~ 122 °F)			
	Operating Humidity	Less than 90% RH			
	Chassis	No Rack Mount	1U Rack Mount		2U Rack Mount
	Dimensions	255x235x47.5mm	372x310.5x46.5mm		440x383.6x70mm
	Weight (no HDD)	1.98lb / 0.9kg	4.6lb / 2.1kg	5.1lb / 2.3kg	9.7lb / 4.4kg

Note: Specification subject to change without notice