

**FOR CAMERAS**

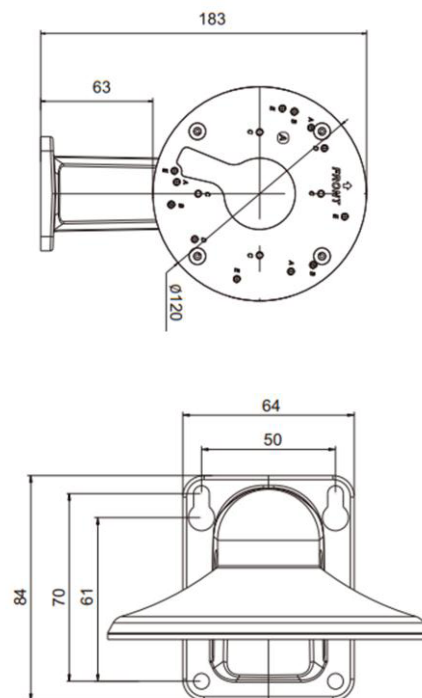
- N2IP4D/4MM
- N2IP4T
- N2IP4W
- N2IPKITCAM
- HDTIR90WD
- HDEIR60



**SPECIFICATIONS**

General	
Material	Aluminum
Color	White
Operating Humidity	0% - 90% RH
Product Dimensions	183mm x 120mm x 84mm
Product Weight	350g

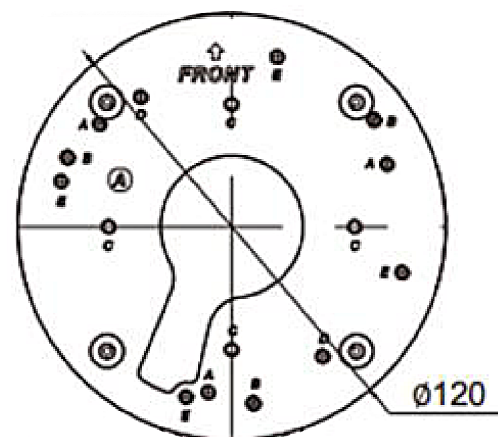
**DIMENSIONS**



**MOUNT COMPATIBILITY**

Camera Model	Screw Size	N2WM Hole Markings
N2IP4D/4MM	PM4*8MM	B
N2IP4T	PM4*14MM	F
N2IP4W	PM4*8MM	H
N2IPKITCAM	PM4*8MM	C
HDEIR60	PM4*8MM	C
HDTIR90WD	PM4*14MM	F

**HOLE MARKINGS**



\* All specifications subject to change without notice for quality improvement

## **ABOUT THIS BRACKET – Read Before Use**

1. Before installation, please check the bracket packing and accessories are intact. If the bracket is damaged or missing accessories please contact us at 855-388-7422 or email us at [info@northernvideo.com](mailto:info@northernvideo.com) .
2. Do not exceed the MAX load listed on the bracket label.
3. Check the installation area and make sure it will support the total weight of the installed product and bracket.
4. Bracket ships with installation screws, check the material the bracket will be installed onto and use appropriate screws based on the material (may not be supplied with bracket).
5. If the bracket is installed near the ocean or areas exposed to heavy chemicals corrosion may occur which can affect the strength of the bracket. Check the bracket regularly for corrosion.