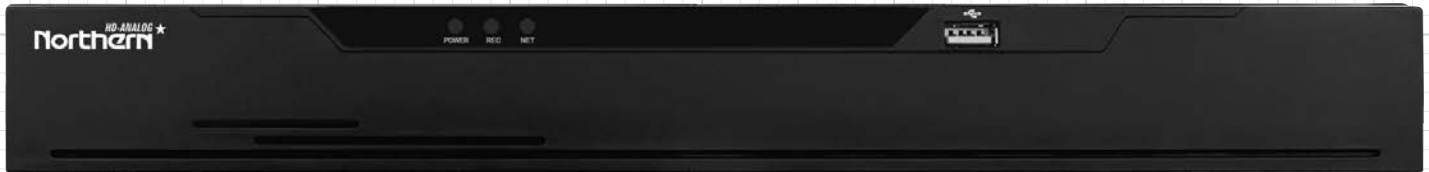


N3HVR Kit Series

4 Channel N3HVR Kit

INCLUDES: 4-Channel N3HVR w/ 2TB Storage
4 x 1080p 2.8mm Eyeball Cameras w/ 60' IR



HVR4 FEATURES:

- ◆ Up to 1080p Analog Recording @ 15FPS
- ◆ 2 Terabyte Included Storage
- ◆ H.265 Recording Compression
- ◆ NorthernView Mobile App for iPhone, iPad & Android™
- ◆ Built-In Motion Detection
- ◆ Built-In Privacy Mask
- ◆ 4 Channel Synchronous Playback
- ◆ Free CMS Software Included
- ◆ Supports P2P Operation
- ◆ Included Mouse for Control
- ◆ Dual USBs for Copying Video/Mouse Control
- ◆ Simultaneous HDMI & VGA Outputs
- ◆ 1 Channel Audio Input/Output
- ◆ UTC Control of Cameras OSD



NORTHERN VIEW

Free Mobile App for iPhone, iPad, Android™ & Android™ Tablets

CAMERA FEATURES:

- ◆ Full HD 1080p Resolution
- ◆ Digital Wide Dynamic Range
- ◆ True Day/Night Mechanical IR Cut Filter
- ◆ 2.8mm Fixed Focal IR Lens
- ◆ UTC & Cable Controllable OSD
- ◆ 3D Digital Noise Reduction
- ◆ 12 Volt DC Power
- ◆ 18 IR LED's / 60' IR Range
- ◆ 3-Axis Wall or Ceiling Mountable
- ◆ IP66 Weatherproof

Android is a trademark of Google LLC.



N3HVR Kit Series

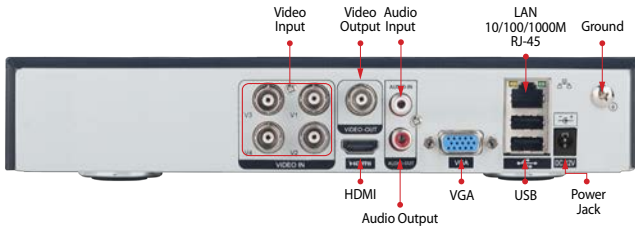
N3HVR4 Specifications

	FEATURES	N3HVR4
Video/Audio Input	Video Compression	H.265+, H.265, H.264+, H.264
	Analog Video Input	4-Channel
		BNC Interface (1.0Vp-p, 75Ω)
	TVI/CVI/AHD/Formats	8MP(Lite) / 5MP / 4MP / 3MP / 1080p / 720p
	960H Format	PAL / NTSC
	IP Channels (1080p Max)	4+2
	Audio Compression	G.711A
Audio Input	1-Ch. RCA Input	
Video/Audio Output	BNC Output	1x CVBS 640x480 Max
	HDMI Output	1x HDMI 3840x2160, 1920x1080, 1280x1024, 1024x768
	VGA Output	1x VGA 1920x1080, 1280x1024, 1024x768
	Frame Rate	4Ch Main stream: 7fps@8MP Lite, 6fps@5MP, 7fps@4MP, 15fps@1080p, 30fps@720p&960H
		Sub Stream: 15FPS @ 704x480, 640x360, 480x270, 352x288
	Record Resolution	960x576(960H), 1280x720(720p), 1920x1080(1080p), 2560x1440(4MP), 2560x1920(5MP), 1280x1440(8MP-Lite)
	Video Bit Rate	Main Stream: 126Kbps ~ 4096kbps / Sub Stream: 16Kbps ~ 1024kbps
	Audio Output	1-Channel RCA Output
	Audio Bit Rate	128kbps
	Dual Stream	Yes - Supports
	Stream Type	Video / (Audio Recording Stream Enabled via Record Setup)
	Synchronous Playback	4 Channel
Multi Screen Viewing	1, 4, 6	
Network Mgmt.	Remote Connections	Up to 4 Simultaneous Connections
	Network Protocols	HTTP, HTTPS, TCP/IP, IPv4, UPnP, UDP, RTSP, SMTP, NTP, DNS, DHCP, P2P, IP Filter, DDNS, 802.1X, SNMP
Hard Disk	SATA	1 x SATA (8TB Max Drive Size)
	Capacity	Up to 8TB
Ext. Interface	Network Interface	1 RJ-45 port (10/100Mbps)
	USB Interface	USB x 2 (Front & Rear)
	Serial Interface	N/A
	Alarm In/Out	N/A
	Mobile App	NorthernView Mobile App for iPhone, iPad & Android™
General	Power Supply	DC 12Volt, 2Amp
	Consumption (no drives)	Max 5W
	Operating Temp	-10 °C ~ 50 °C (14 °F ~ 122 °F)
	Operating Humidity	Less than 90% RH
	Dimensions (L x W x H)	2.1" x 9.6" x 1.7" (255 x 244 x 44mm)
	Certifications	CE / FCC
	Chassis	Non Rack Mount
Weight (no drives)	1.9lb, 900g	

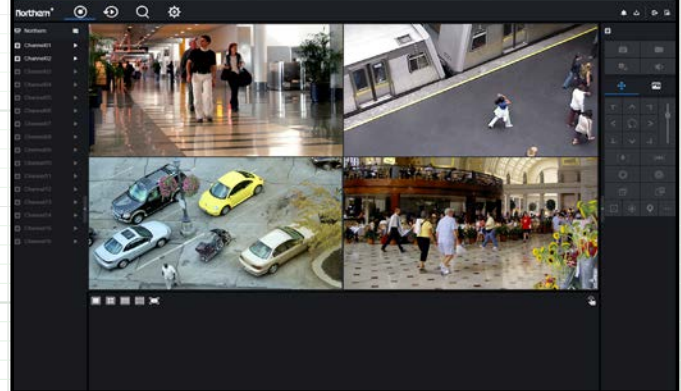
Note: Specification subject to change without notice

N3HVR Kit Series

HVR4 Rear Panel Definitions



Browser Based Remote Software



HDIEIR60 Camera Specifications



SPECIFICATION	HDEIR60
Image Sensor	1/2.8" CMOS Sensor
Total Pixels	1984 x 1225
Active Pixels	1920 x 1080
Resolution	1920 x 1080 (1080p)
Scanning System	Progressive Scan
OSD (On Screen Display)	Dual OSD Access: Cable OSD Controlled / UTC Controlled (coaxial control)
True WDR (Wide Dynamic Range)	Yes- 120dB
DNR (Digital Noise Reduction)	3D DNR - Auto, Manual (0~30), Off
Video Output	TVI, CVI, AHD & 960H (Selectable via OSD Cable)
Lens Type / Viewing Angle	2.8mm IR Lens - H: 108.9° V: 58.8°
Shutter Speed	Auto, Manual 1/25 ~ 1/10,000
IR Cut Filter	Built in Mechanical
Minimum Illumination	Color 0.001 Lux, B/W 0.0 Lux, IR LED ON
IR LED Count / Range	24 IR LED's / 60' Range / 850nm
S/N Ratio	More than 50dB
Automatic Gain Control	Auto, Manual 0 ~16 Adjustable
Sync System	Internal
Gamma Characteristics	y = 0.45 typ
White Balance	ATW, MWB - R & B Gain 0~32 Adjustable
Back Light Compensation	Globe / BLC / 1~8 Adjustable
Day/Night	EXT / Auto / Color / B/W
Languages	English, French, Spanish, German, Italian (see OSD Menu for more)
Brightness	0 ~30 Adjustable
Power Input	12VDC Only
Power Requirement	120mA /250 mA IR LED ON
Overall Camera Dimensions	4.6" x 4.1" (φ118 x 103mm)
Housing / Color	Aluminum / White
Weight	1.2lb / 550g
Operating Temperature	-14°F ~ 131°F
Weatherproof Rating	IP66

Note: Specification subject to change without notice