

**NVR4POEH** NVR with 4-Channel POE  
**NVR8POEH** NVR with 8-Channel POE  
**NVR16POEH** NVR with 16-Channel POE



**GUARDING VISION**  
 Free Mobile App for iPhone,  
 iPad, Android & Android Tablets



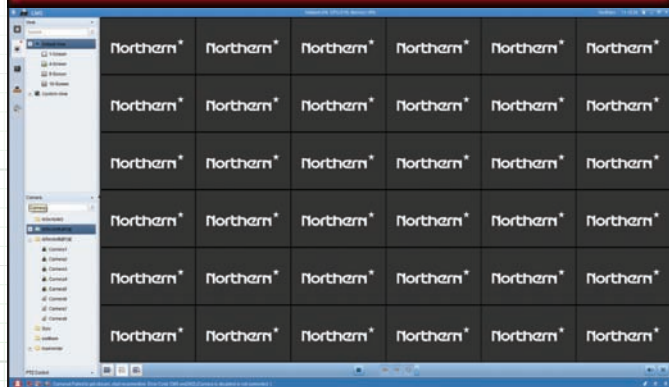
### FEATURES:

- ◆ Real-Time 30FPS/Ch Recording @ 1080p
- ◆ Up to 8MP Recording
- ◆ H.265, H.265+ Recording Compressions
- ◆ Full Mobile Apps for iPhone, iPad & Android
- ◆ Built-in Motion Detection/Privacy Mask
- ◆ Free CMS Software
- ◆ Free Streaming Server Software
- ◆ Supports P2P Operation
- ◆ Up to 12TB Storage Capacity
- ◆ Integrated 50W/120W/200W PoE Switch (4/8/16Ch)
- ◆ Included Mouse & IR Remote
- ◆ Dual USBs for Copying Video & Mouse Control
- ◆ Simultaneous HDMI & VGA Video Outputs
- ◆ Up to 16 Channel Synchronous Playback
- ◆ Accepts ONVIF/PSIA Protocols
- ◆ Rack Mount Hardware Included (8 & 16Ch)
- ◆ PAL/NTSC Selectable
- ◆ Built-in Audio & Alarm
- ◆ Supports 2-Way Audio
- ◆ UL/CUL Certified

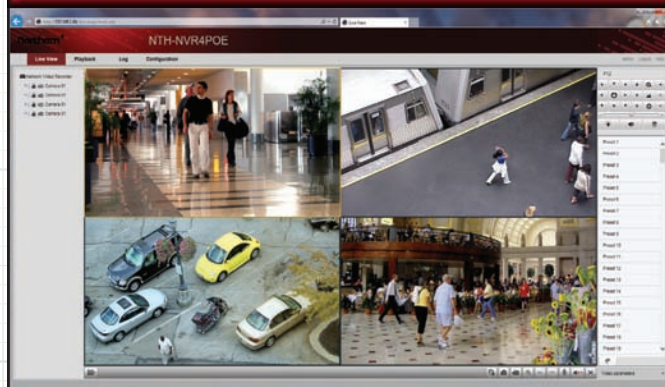


**Plug and Play!**  
 PnP Operation – Automatically  
 Finds & Configures Northern IP Cameras  
 Cameras Sold Separately

## CMS Software For PC/Mac



## Browser Based Remote Software



## Learn More

### H.265 / H.265+ Recording Compression

H.265 & H.265+ compression formats provide both increased video quality and reduced bandwidth consumption.

### Mobile Apps for iPhone, iPad & Android

Guarding Vision Mobile APP allows you to View & Playback Video from multiple mobile devices.

### Real Time 1080p Recording

All models record 30FPS per Channel @1080p resolution.

### Up to 12TB Storage Capacity

Large Hard Disk storage capacity allows for longer storage of recorded video.

### Built in PoE Switch

4Ch/50W, 8Ch/120W or 16Ch/200W PoE Switch for connecting & powering cameras directly from the NVR using only a single CAT5 or CAT6 cable.

### Free CMS Software for PC & MAC

Connect to multiple NVRs or individual IP cameras from a single computer with the included CMS software.

### Free Streaming Server Software

Perfect for lowering the bandwidth load on the NVR in applications where multiple users need constant remote access.

### Mouse & IR Remote Control

Easily control the NVR from either the included Mouse or IR Remote Controller.

### HDMI & VGA Video Outputs

Simultaneously display video through both VGA & HDMI monitor outputs.

### Built in Motion Detection

Maximize your recording duration by only recording when Motion is detected by the NVR.

### Supports DDNS

DDNS insures you will always stay connected to your NVR when using a Dynamic IP address.

### P2P Operation

Peer to Peer functionality makes set up easier by bypassing the need to configure port forwarding in most routers.

### Dual USB Ports

NVR's include front and rear USB Ports for making copies of video and mouse control of the DVR.

### Remote Accessibility

Remotely connect, monitor, playback, record and change NVR settings via IE and Safari Browsers.

### Plug & Play

Plug & Play automatically finds & configures Northern IP cameras for easy set-up.

## Hard Drive Configurations / Part Numbers / Package Contents

DRIVE SIZE	4 Channel	8 Channel	16 Channel
2TB	NVR4POE2TH	NVR8POE2TH	NVR16POE2TH
4TB	NVR4POE4TH	NVR8POE4TH	NVR16POE4TH
6TB	NVR4POE6TH	NVR8POE6TH	NVR16POE6TH
8TB	N/A	NVR8POE8TH	NVR16POE8TH
12TB	N/A	NVR8POE12TH	NVR16POE12TH

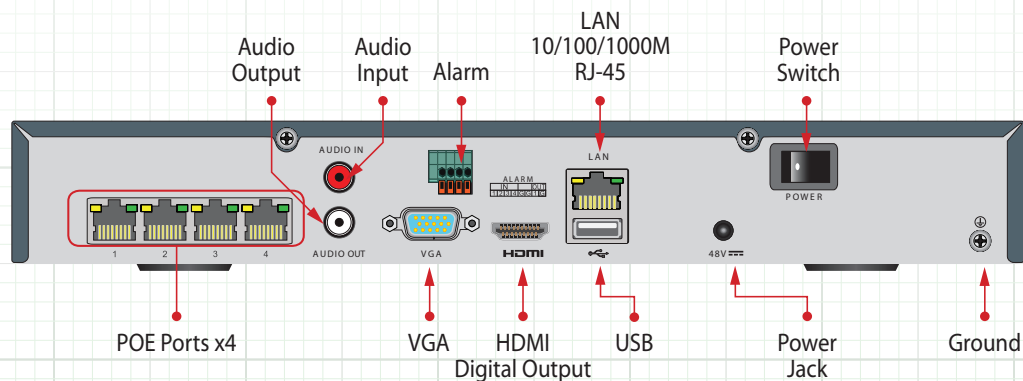
### PACKAGE CONTENTS

1. Power Cord (8 & 16 Ch units)
1. Power Supply / Cord (4Ch)
1. IR Remote Control
1. Software CD
1. Quick Start Manual
2. Rack Mount Ears (8 & 16Ch)
1. Mouse

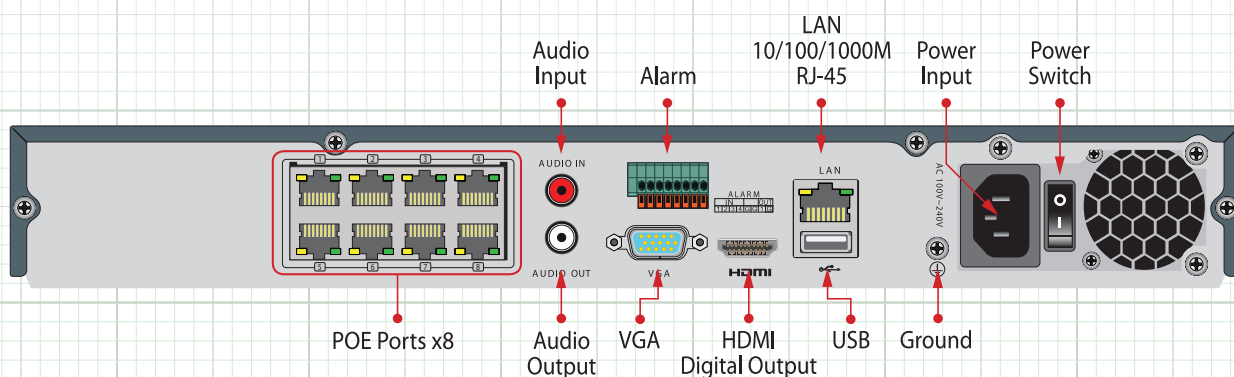


## Rear Panel Definitions / Connections

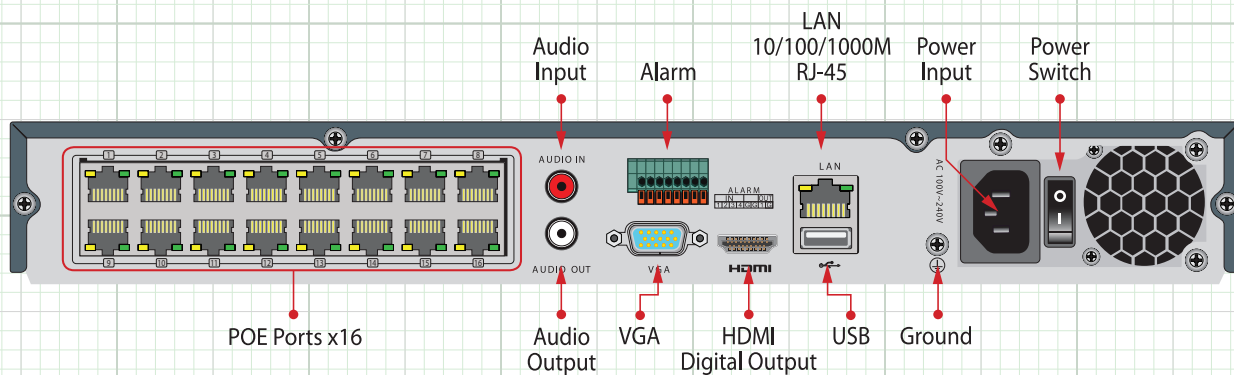
### 4 Ch. Models



### 8 Ch. Models



### 16 Ch. Models



## Front Panel Controls & Connections



## NVRPOEH Series Specifications

	FEATURES	NVR4POEH	NVR8POEH	NVR16POEH
Video/Audio Input	IP Video Input	4-Channel	8-Channel	16-Channel
	Two-Way Audio Input	1-Channel, RCA (2.0 Vp-p, 1 k Ω)		
	NTSC / PAL	Yes		
	Plug & Play Models	All Northern IP3 & IP4, IP4H265 Series Cameras, IPPTZ30XIR		
Network	Incoming Bandwidth	40 Mbps	80 Mbps	160 Mbps
	Outgoing Bandwidth	80 Mbps	160 Mbps	
	Remote Connection			
Video/Audio Output	Recording Resolution	8MP (4K) / 6MP / 5MP / 4MP / 3MP / 1080p / UXGA / 720p / VGA / 4CIF / DCIF / 2CIF / CIF / QCIF		
	Frame rate	Main stream: 50 fps (P) / 60 fps (N)		
		Sub-stream: 50 fps (P) / 60 fps (N)		
	HDMI Output Resolution	4K (3840×2160)/30Hz, 1920×1080p/60Hz, 1600×1200/60Hz, 1280×1024/60Hz, 1280×720/60Hz, 1024×768/60Hz;		
	VGA Output Resolution	1920×1080/60Hz, 1280×1024/60Hz, 1280×720/60Hz, 1024×768/60Hz		
	Audio Output	1-Channel, RCA (Linear, 1 KΩ)		
De-coding	Live View / Playback Resolution	8MP (4K) / 6MP / 5MP / 4MP / 3MP / 1080p / UXGA / 720p / VGA / 4CIF / DCIF / 2CIF / CIF / QCIF		
	Playback Capability	1-ch @ 8 MP (25fps) / 2-ch @ 4MP (30fps) / 4-ch @ 1080p (30fps)	2-ch @ 8 MP (25fps) / 4-ch @ 4MP (30fps) 8-ch @ 1080p (30fps) / 16-ch @ 4CIF (30FPS)	
Recording & Playback	Record Mode Types	Manual, Continuous, Alarm, Motion, Motion & Alarm		
	Record Time Periods	8 Recording Time Periods with Separate Record Types		
	Pre & Post Recording	Pre & Post Recording for Alarm & Motion Detection / Pre Recording for Schedule & Manual Recording		
	Redundant Recording	N/A	Yes - Available only in 2 HDD configurations	
	Recording Parameters	Independent for Each Channel (Resolution, Frame Rate, Bit Rate, Image Quality, etc.)		
	Zooming	Available in Live View & Playback		
	Synchronous Playback			
	Playback Controls	Pause, Reverse Play, Speed Up, Speed Down, Skip Forward, Skip Backward, Mouse Drag		
	Searching	Search Recorded Files by Events (Alarm Input / Motion Detection)		
Hard Disk	SATA	1 SATA Interface	2 SATA Interfaces	
	Capacity	Up to 6TB Capacity for each HDD		
	Max Storage	6TB	12TB	
	HDD Detection	Built-in S.M.A.R.T and Bad Sector Detection		
External Interface	Network Interface	1, RJ-45 10/100/1000 Mbps Self-Adaptive Ethernet Interface		
	USB Interface	2 × USB 2.0	Front Panel: 1 × USB 2.0; Rear Panel: 1 × USB 3.0	
	Alarm In/Out	4-In / 1-Out		
IVMS Software	CMS Client - Included	Yes		
	Video Server - Included	Yes		
	Streaming Server - Included	Yes		
PoE	Network Interface	4 Independent RJ-45, 100 Mbps PoE	8 Independent RJ-45,100 Mbps PoE	16 Independent RJ-45, 100 Mbps PoE
	Max. Power	50W Total / 30W Max per Channel	120W Total / 30W Max per Channel	200W Total / 30W Max per Channel
	Supported Standard	IEEE 802.3 af/at		
General	Power Supply	External 48V DC	Internal / 110~220V AC	
	Consumption	Max 88W w/Full POE & HDD	Max 180W w/Full POE & HDD	Max 280W w/Full POE & HDD
	Operating Temperature	-10 °C ~ +55 °C (+14 °F~ + 131 °F)		
	Operating Humidity	10 % ~ 90 %		
	Chassis	1U Non-Rack Mount	1U Rack Mountable	
	Dimensions (W × D × H)	315 × 240 × 48 mm (12.4" × 9.4" × 1.9")	385 × 315× 52 mm (15.2" × 12.4" × 2.0")	
	Weight	≤ 1 kg (2.2 lb)	≤ 1.54 kg (3.4 lb)	

Note: Specification subject to change without notice